

# Chewelah School District #36 – *Where Dreams Begin*

Board of Director's Regular Meeting October 20, 2021

6:30 PM at District Office and Virtually via Zoom

**Revised**

1. Call meeting to order
2. Flag salute
3. Modifications to the agenda
4. Approval of the agenda
5. Approval of the minutes
  - September 15, 2021 board meeting
  - October 7, 2021 special meeting/work session
6. Public Comments: Individuals interested in speaking are asked to sign the public comment sign-in form. Speaking time for public comments is limited to three minutes. Please recognize the Board has the option to decline verbal public comments and only allow written public comments to be submitted.  
*Please know that concerns related to personnel are not heard in a regular open meeting but may be heard in an executive session with the Superintendent and Board of Directors. Disagreements with staff decisions need to be submitted through the district's grievance policy #4312 or other pertinent grievance procedures.*
7. School Community Presentations
  - A. Student ASB Director Kailee Parrott
  - B. Nave Sety Scholarship Report – Brenda Gregerson
  - C. Student learning educator presentation
  - D. Maintenance and facilities update – Jason Tapia
  - E. Principal reports (blue)
  - F. Business Manager – Superintendent Perrins
    - ✓ Financial reports 2020-21 (lavender) and 2021-22 (green)
    - ✓ Enrollment 2021-22
8. Consent agenda:
  - A. Approve financial reports
  - B. Approve general fund voucher numbers 120236-120249 for a total of \$23,318.93; voucher numbers 120250-120273 for a total of \$55,862.88; voucher numbers 120303-120307 for a total of \$11,454.04, voucher numbers 120309-120347 for a total of \$41,950.96; ACH voucher for \$344.17; voucher number 120353 for \$80.00; and voucher numbers 120354-120403 for a total of \$75,612.26
  - C. Approve capital projects fund voucher number 120308 for \$44,519.25
  - D. Approve ASB voucher numbers 120274-120276 for a total of \$3,502.63; voucher numbers 120348-120352 for a total of \$1,856.17; ACH voucher for \$6.08; and voucher number 120404 for \$6,256.31
  - E. Approve payroll in the amount of \$897,502.71
  - F. Personnel:
    1. Approval to hire Shawn Crockett as cross country assistant coach
    2. Approve resignation of Ken Chartray as high school boys basketball junior varsity coach
    3. Approval to post for high school boys basketball junior varsity coach
    4. Approve resignation of Ken Chartray as high school baseball junior varsity coach
    5. Approval to post for high school baseball junior varsity coach
    6. Approval to hire Austin Burgess as junior high football assistant coach
    7. Approve resignation of Austin Burgess as high school wrestling assistant coach
    8. Approval to post for high school wrestling assistant coach
    9. Approval to hire Austin Burgess as high school wrestling head coach
    10. Approve resignation of Tom Skok as junior high girls basketball head coach
    11. Approval to post for junior high girls basketball head coach
    12. Approve resignation/retirement of Sherry Tilla as Title I teacher, effective December 31, 2021
    13. Approval to post for a teacher position

14. Approval to post for a paraeducator position
  15. Approval to hire Paige Campbell as high school girls basketball assistant coach
  16. Approve the substitute teacher wage schedule (canary)
9. Superintendent Report
  10. Old Business:
    - A. Second reading Policy 3241 Student Discipline (gray)
    - B. Second reading Policy 2000 Student Learning Goals (green)
    - C. Second reading Policy 2004 Accountability Goals (buff)
  11. New Business:
  12. Board Reports
    - A. Director Kyra Rolstad
    - B. Director Bryan Tidwell
    - C. Director Dan Krouse
    - D. Director Theolene Bakken
    - E. Chairperson Judy Bean
  13. Future Meeting Agenda Topics
  14. Recess to Executive Session – review the performance of a public employee
  15. Possible action following executive session
  16. Adjourn

Face coverings required for all in-person attendees

In accordance with Governor's Proclamation 20.25.15, which prohibits the Board of Directors from allowing individuals without face coverings to enter or remain in any indoor space, all in-person attendees must wear a face covering at all times during the meeting. Individuals who choose not to comply with the requirement may access the meeting virtually via Zoom at <https://us02web.zoom.us/j/86345469509>.

Individuals with disabilities who may need a modification to participate in a meeting should contact the superintendent's office, at 685-6800, ext. 1002, no later than three days before a regular meeting and as soon as possible in advance of a special meeting so that special arrangements can be made.

**CHEWELAH SCHOOL DISTRICT #36**  
**BOARD MEETING**  
**District Board Room 210 N. Park and Virtually via Zoom**  
**September 15, 2021**

Chairperson Judy Bean called the meeting to order at 6:30 PM. Directors present were Kyra Rolstad, Theolene Bakken, Bryan Tidwell, and Dan Krouse. Superintendent Jason Perrins and Business Manager Mara Schneider were present. There were eighteen audience members present at the meeting and two people via internet connection. Following the flag-salute, the first item of business was:

**MODIFICATION TO THE AGENDA:** No modification needed.

**APPROVAL OF THE AGENDA:** Director Bakken moved to approve the agenda as amended. MC

**APPROVAL OF THE MINUTES**

- Director Tidwell moved to approve the minutes for the August 25 board meeting. MC
- Director Rolstad moved to approve the minutes for the September 2 work session. MC

**PUBLIC COMMENTS:** No public comments were presented.

**SCHOOL COMMUNITY PRESENTATIONS**

- A. Student ASB Director Kailee Parrot reported on the beginning of the school year including school and community activities, athletics, and assemblies. She said school spirit is increasing and provided feedback from students about the start of school.
- B. High school Cheer Coach Amanda Katzer reported on cheer camp and their participation in a halftime performance at a recent WSU football game. She mentioned current fundraising projects, squad goals, and introduced the cheerleaders.
- C. Teacher Brian Harting presented the student learning educator report about the implementation of the K-5 Bridges math curriculum, including materials, assessments, successes and challenges.
- D. Maintenance Supervisor Jason Tapia thanked district staff for their support during a recent difficult personal time and presented the maintenance and facilities update.
- E. Principals Julie Price, Erin Dell, and Shawn Anderson provided written school reports and explained positive aspects of the first weeks of school.
- F. Business Manager Mara Schneider presented the current financial report.

**CONSENT AGENDA:** Chairperson Bean submitted for approval of those expense reimbursement claims certified as required by RCW 42.24.090 that have been made available to the Board. After a brief discussion of the consent agenda items, Director Bakken moved to approve the consent agenda. MC

- A. Approve financial reports
- B. Approve general fund voucher numbers 120188-120220 for a total of \$34,579.76 and vouchers 120225-120235 for a total of \$127,486.88
- C. Approve capital projects fund voucher numbers 120221-120222 for a total of \$11,541.27
- D. Approve ASB voucher numbers 120223-120224 for a total of \$1,634.55
- E. Approve payroll in the amount of \$706,027.73
- F. Personnel:
  1. Approval to hire Finn Furth as a high school football assistant coach
  2. Approval to hire Hannah Rollins as a paraeducator
  3. Approve resignation of Cameron Gump as a physical education teacher
  4. Approval to post for a physical education teacher
  5. Approval to post for bus drivers
  6. Approval to hire Tom Skok as secondary/elementary assistant principal
  7. Approve resignation of LaVonne Smith as high school girls basketball junior varsity coach
  8. Approval to post for high school girls basketball junior varsity coach
  9. Approve resignation of LaVonne Smith as junior high girls softball assistant coach
  10. Approval to post for junior high girls softball assistant coach
  11. Approve maintenance supervisor salary schedule
  12. Approve technology director salary schedule
  13. Approve transportation supervisor salary schedule
  14. Approve business manager salary schedule
  15. Approve IPD increase for payroll manager
  16. Approve IPD increase for administrative secretary

## **SUPERINTENDENT REPORT:**

- Superintendent Perrins requested guidance from the Board in creating a policy renewal and adoption process. He also offered to create a roadmap to accomplishing the Board goals that will be posted on the district website. Superintendent Perrins thanked the principals for a good start to the year and said he sees good things happening in the classrooms.

## **OLD BUSINESS:**

- Director Rolstad moved to approve the Jenkins Jr/Sr High staff handbook for 2021-22. MC

## **NEW BUSINESS:**

- Director Tidwell moved to approve the Safe Walking Zone 2021. MC
- Director Bakken moved to approve the Interlocal Agreement between Chewelah School District and Newport School District. The agreement allows cooperative food service purchases. MC
- Director Tidwell moved to approve the list for 2021-22 of potential overnight trips. MC
- Director Bakken moved to approve the Quartzite Learning instructional materials list for 2021-22. MC
- Director Tidwell moved to approve programs and special program grant assurances including Federal and State Programs, Special Education IDEA Part B, Perkins V, Highly Capable Program, Learning Assistance Program, Title II Part A, Title I Part A, Title IV Part A, Esser Application as part of the general assurance, TPEP, and Minimum Basic Education Compliance. MC
- First reading of Policy 2245 Alternative and Extended Learning Opportunities/Alternative Learning Experience Courses. Director Bakken moved to approve Policy 2245 Alternative Learning Experience Courses. MC
- First reading of Policy 2005 School Improvement Plans. The policy includes a deadline of September 30 for annual board approval of school improvement plans, which will not be met this year. The Board requested additional review and revisions of the policy. Director Krouse moved to suspend the school improvement plans policy for one year. MC

## **BOARD REPORTS**

- Director Kyra Rolstad enjoyed the presentations at the meeting and would like to continue to invite groups to meetings. She requested that the bullying mentioned by the cheer coach be investigated by the compliance officer.
- Director Bryan Tidwell thanked the administrators, teachers, and parents for their contributions to the opening of the new school year. He appreciates that the community is focused on the education of youth. He echoed Director Rolstad's concerns that the district continues to make schools a safe space.
- Director Dan Krouse thanked the Board for reaching out recently during a personally difficult time. He expressed concern that students are not clear about COVID-19 quarantine protocols as mentioned by Kailee Parrot. He requested increased communication from staff to students. He thanked the Board, Superintendent Perrins and the administrators for their summer work and for creating a positive influence moving forward.
- Director Theolene Bakken said she received no complaints the past month and feels that people see improvements and are pleased with the changes.
- Chairperson Judy Bean reported that her conversations with community members reveal a sense of growth in the school district and that people are hopeful and appreciative.

## **FUTURE MEETING AGENDA TOPICS**

- Chairperson Bean requested a Highly Capable Program report and a CTE course offering report.
- Director Bakken also requested a Highly Capable Program report.

Jennifer Watts invited the Board to join in the staff city walk starting at 3:30 PM at Gess Elementary on September 16.

## **EXECUTIVE SESSION**

At 8:18 PM, the Board adjourned to an executive session to review the qualifications of an applicant for public employment and review the performance of a public employee in accordance with RCW 42.30.110. The executive session is expected to last ten minutes. At 8:28 PM the Board reconvened the regular meeting.

With there being no other business, the meeting was adjourned at 8:28 PM. The next regular board meeting will be Wednesday, October 20, 2021, at 6:30 PM at the district office.

---

Judy Bean  
Chairperson

---

Jason Perrins  
Secretary of the Board

**CHEWELAH SCHOOL DISTRICT #36  
SPECIAL MEETING/WORK SESSION  
210 North Park Street and Virtually via Zoom  
October 7, 2021**

Chairperson Judy Bean called the special meeting/work session to order at 5:32 PM. Directors present were Kyra Rolstad, Bryan Tidwell, and Theolene Bakken. Dan Krouse joined the meeting at 5:34 PM. Superintendent Perrins was in attendance. Two audience members attended the meeting in person and two members attended virtually. Following the flag salute, the first item of business was:

Director Bakken moved to approve the agenda. MC.

The Board participated in public officials' liability training provided by Dr. Pauline Cline of Clear Risk Solutions. Topics covered included determining liability, Board liability, the role of the Board, Open Public Meetings Act and emails, Board procedures, and establishing and maintaining the leadership team.

Director Krouse moved to accept the bid from Chewelah Construction for the roofing on the maintenance building. MC.

Director Bakken moved to approve the hire of Joshua Collier as bus mechanic. MC.

Director Bakken moved to approve a posting for a certificated teaching position at Quartzite Learning if needed. MC.

First reading of Policy 1810 Annual Goals and Objectives. Director Bakken moved to approve Policy 1810 as amended. MC.

First reading of Policy 3241 Student Discipline.

First reading of Policy 2000 Student Learning Goals.

First reading of Policy 2004 Accountability Goals.

Superintendent Perrins reported on the following:

- Board goals are finalized and will be posted on the website
- Levy information nights October 21 and 26
- Chewelah Academia newsletter sent to the community
- Vision statement survey results available
- Strategic Plan
  - First meeting of planning committee comprised of board members, community members, administrators, classified staff, teachers, and students will be October 14
  - Focus areas are teaching and learning, facilities and maintenance, school culture and student services
- Highly Capable program update
- List of Career and Technical Education (CTE) courses offered at the high school and program update

With there being no other business, the meeting was adjourned at 7:51 PM. The next regular board meeting will be Wednesday, October 20, 2021, at 6:30 PM at the District Office.

---

Judy Bean  
Chairperson

---

Jason Perrins  
Secretary of the Board

# **Jenkins JR./SR. High School**

October 13, 2021

## **Board Report**

### **I. Mask Compliance**

The last two days we did a random mask wearing survey in classes to conduct an informal survey as to how many students were complying with the mask wearing requirement during classes. Neither staff or students were aware of the survey. During the first day visual survey of 13 classrooms one student had their mask completely down and two students had their nose exposed. During the second visual survey of 13 classrooms, one student was asked to pull up their mask and all students were wearing their masks appropriately.

This was an awesome testament to the compliance of the mask mandate in our classes to keep our students and staff safe.

The recent spike of Covid positive students and staff were the result of exposure of a Covid positive volleyball player with her team. This has happened in many of the schools in our league as per my conversation with league principals on October 12, 2021. Schools from across the league are seeing the same pattern of spread which has been through family contact and athletics. There has been very little evidence of the spread taking place in the classrooms.

### **II. PROFESSIONAL DEVELOPMENT**

This month we have attended professional development opportunities to learn more about eVAL, an online system to assist with the management of our Marzano Teacher and Principal evaluation process. On Wednesday, the union president Jennifer Watts will be participating in the eVAL professional development opportunity so that she can be a teacher leader in the process. I am transitioning to the eVAL management system this year with comprehensive and voluntary staff.

### **III. HOMECOMING ACTIVITIES**

Homecoming festivities were a hit this year with a majority of the activities and processes planned, organized and implemented by our very own ASB leadership team. They did a fantastic job given the health requirements. The volleyball game was canceled due to quarantine efforts which was a real bummer, however, the football game was a great time with a big win for the

Cougars. The Homecoming Royalty was non-traditional this year as it was based on who had the most school spirit during Homecoming week.

#### **IV. SCHOOL IMPROVEMENT PLANNING**

During the Jenkins Jr/Sr High School accreditation process last year, we paused for celebration for our improvement efforts in our continued efforts in broadening our College in the High School (CiHS) offerings for all students who meet the entry requirements, and our purchase of technology and use of a CANVAS to improve our student academic management systems.

We started the math student learning improvement process last year and are continuing to focus on math staffing, professional development, and instructional material alignment during the 2021-22 school year. There is a meeting today, October 13<sup>th</sup> with ESD101 to talk about math support and professional development for our staff as we continue our school improvement efforts.

Other areas of focus this year for school improvements are high school science offerings and our systems for meeting the needs of quarantined students who are out for seven to 14 days depending on the circumstances.

#### **V. 2020/21 GRADUATION RATE**

Jenkins High School graduation rate has remained steady at 97% for the 2019/20 school year and 97.4% in 2020/21.

As I have reported before, we are very proud of this graduation rate; however, I understand clearly, that it would not be possible without the assistance of our district Quartzite Learning Center. Many of our struggling students in high school transition to this district supported program where they can receive more individualize instruction in a more flexible, non-traditional setting. When I first became principal of the high school six years ago, it was common to lose our struggling students to neighboring districts where families thought that a student's needs could better be met. Today, however, we proudly retain most struggling students in our community schools.

The effects to the district are that many of the students who transition to the Quartzite Learning Center are behind in credits and many continue to be behind. The graduation rate, as you can guess, of Quartzite seniors is not as high as the high school. When students transition, they are still, often a Jenkins student. They may take one class or a couple of courses here each year. Why? Because we care about the whole child. We care that they graduate. On time? Not always, but that is okay. Our goal as an administrative

team is growth over time. We celebrate student success regardless of how a student earns their diploma.

So, while I celebrate Jenkins' graduation rate for 2020/21, I also am thankful that we have a robust alternative program for our Chewelah students, so they have one more local alternative for success. The program under Erin Dell's leadership and district support has increased student graduation options. Change is slow and acceptance that students and their families have choices can be threatening and sometimes a challenge, but a challenge and a risk well worth taking.





## INFORMATION FOR PARENTS & STUDENTS

**Our school will participate in the Healthy Youth Survey during this Fall.**

The survey asks questions about risks for injury, health outcomes, and alcohol and drug use. Schools, and state and local agencies use survey results to support our youth and reduce their risks. The Healthy Youth Survey is voluntary and anonymous and provides important information to guide policy and programs that serve our youth.

---

*Please share this information with your student.  
Then talk about the survey and decide if your student will participate.*

---

**Q: Who will be asked to take the survey?**

**A:** Students in Grades 6, 8, 10, and 12 across Washington State and students in Grades 7, 9 and 11 in small school districts.

**Q: Is the survey voluntary?**

**A:** Yes! Students taking the survey can skip questions and stop taking the survey at any time. If you do not want your student to participate in the survey, you can call the school to excuse your student. Students can also tell their teacher that they do not want to take the survey. Students not taking the survey will take part in a different activity, such as studying or reading in the library. There is no penalty for not taking part in the survey. Your student's grades will not be affected.

**Q: What questions are on the survey?**

**A:** Survey questions come from surveys across the nation and in Washington. Parents or guardians can contact their school office to see a copy of the survey.

**Question topics include:**

- Information, such as age, gender, and race and ethnicity
- Feelings about school and community
- Relationships with parents, friends, and neighbors
- Eating habits, physical activity
- Health education
- Attitudes about and the use of tobacco, alcohol and other drugs
- Behaviors and feelings related to safety
- Behaviors related to violence
- Gender identity and sexual orientation (not for Grades 6 or 7)
- Sexual behavior and abuse (not for Grades 6 or 7)

**Q: How is student identity protected?**

**A:** Students will not put their names on the survey. There are no codes or information to match a survey to a student. No one from the school will look at their answers. Students will submit their completed surveys confidentially when they are done. Survey results will not identify any student.

**Q: How are the survey results used?**

**A:** Schools, school districts, counties and state agencies use the results to understand our students and to provide them with the services they need. Results are used for planning, evaluating, and improving programs, and getting the money to support them. Anonymous data are also shared with local health departments and approved researchers.

**Need More Information?**

If you have any questions about the purpose of the survey or survey procedures:

- Call toll-free 1-877-HYS-7111
- Email [healthy.youth@doh.wa.gov](mailto:healthy.youth@doh.wa.gov)

Information about the Healthy Youth Survey can be found at: [www.AskHYS.net](http://www.AskHYS.net)

The Washington State Institutional Review Board has approved the procedures for the Healthy Youth Survey that are described in this letter. If you believe these procedures have not been followed, please call 1-800-583-8488. You do not have to leave your name. All messages will be returned.

**Students have been taking the Healthy Youth Survey since 1988. The number of students has grown from only a few thousand students to over 230,000 a year!**

---

*Thank you for reviewing this information and talking with your student!*

*The Healthy Youth Survey is sponsored by the following state agencies: Health Care Authority - Division of Behavioral Health and Recovery, Department of Health, Office of the Superintendent of Public Instruction, and Liquor and Cannabis Board.*

---



# Quartzite Learning

*Options, Opportunities, and Endless Possibilities*

## October 2021 Board Report

What an exciting start to the school year it has been. Teachers are doing an excellent job of connecting with students and families to address their individual needs and design programs to help students be successful.

We are excited to offer on-site classes for our elementary aged students this year one day a week. K-3 grade students are invited to attend classes on Tuesday and 4-6 grade students on Thursday. During this time students are receiving instruction in Music, Science, Art, Literacy, and Math. For Literacy and Mathematics, students have been broken into small groups based on their initial AimsWeb or Star assessments and are working on targeted skills during this time. Teachers are also utilizing the MyPath intervention program for students to target skills. The MyPath program will use their assessment scores to create an individual learning path for each student to focus on the next skills that they need to learn, whether that be remediation or extension.

Having a Special Education teacher here at Quartzite for a portion of the day has allowed us to better address the individual needs of those students who receive services. Our Special Education teacher works with small groups of elementary students on Tuesday and Thursday afternoons as well as meeting with junior high and high school students for small group or individual specially designed instruction to focus on their goals on the other days.

Due to the pandemic, Spring state testing last year was pushed forward to this fall. Students in grades 4-9 and 11 will be taking the Math and ELA Smarter

Balanced Assessment in the coming weeks. Additionally, students in grades 6, 9, and 12 will also be taking the Washington Comprehensive Assessment of Science. For the first time, we will also be offering for students to take the WA Healthy Youth Survey. This is data that we have not previously collected at Quartzite Learning and will help inform us of potential additional needs of our students that we may not have been aware of.

We have seen an increase in our number of students in the Open Doors Reengagement program. In previous years, students would take the GED tests at the SCC campus in Colville. However, SCC is no longer administering GED tests for students who are not enrolled in their own program. Fortunately, we have been able to work with our amazing technology department and get a computer station set-up that meets all the requirements for online GED testing and will now be able to have students test here without having to go to Colville or try and test at home. We are currently working on our end of year report for Open Doors and working on our data collection systems for this program.

We have had one positive COVID case in a student that had been on-site during their contagious period. A few close contacts were identified, but there was no spread within those close contacts. We have reviewed and modified our procedures to ensure that close contacts will be minimized and that students are appropriately socially distanced.

Gess Elementary  
School Board Report  
October 13, 2021

A Word

To follow up on our book study, *The Energy Bus*, staff watched a video clip by Jon Gordon- *One Word that will Change Your Life*. Each staff member selected a word to guide their personal vision for the year. Once staff selected an individual word, they were asked to get into groups and agree on a team word. Teams randomly drew a number to determine what "Rule" their group would lead during a future staff meeting. Some of the words shared out were as follows: persistence, grace, patience, enough, journey, balance, positivity, flexible and intentional. One of our goals here at Gess Elementary is to drive with purpose.

Data Teams

Benchmarking assessments were completed the third week in September. Initial interventions were decided on by grade level teams here at Gess Elementary. The interventions decided on by grade level teams will be put in place for the next seven weeks. In week four of the intervention, during a PLC, teachers will monitor grade level progress. Every eight weeks, grade level teams will meet to determine each students' individual needs and progress to determine a next intervention or extension experience. For example, fourth grade students are developing their multiplicative thinking skills. Based on formative assessments, a math intervention learning inventory provided by Bridges, and STAR Math data, the team was able to determine what specific skills need to be explicitly taught or extended during the Walk to Math time of day.

After analyzing the data from this first benchmarking, we identified need for math interventions. Superintendent Perrins reached out to ESD 101 to seek math coach services to support professional development for staff throughout the school year.

## Challenges

COVID-19 is a challenge. Systems are in place to contact trace when individuals test positive. Nurse Kassi has streamlined the existing system we had in place from last year and I believe K-12 we are all together in our process. The challenge comes into play when students are symptomatic and need to be out for that 10-day period. On average we have about 50 students out on any given day with some type of illness. Teachers are communicating with families and ensuring that students can access learning while they are out of school.

Gess Staff have started the process of brainstorming what our plan will look like in the event we need to go remote due to COVID-19. I sent out the start of a brainstorm to all certificated staff and the leadership team will finalize a plan when we meet this next Tuesday. In the event we have 10% of our building test positive at the same time, we will have a clear plan for a 14-day remote experience.

On a lighter note, we have several boxes of neon orange powder tempera paint that may go bad quickly. While making space in the workroom this year, a staff member noticed that our orange was not being consumed in the powder form. Ms. Sety came to the rescue and organized a schoolwide art show. The buildup has been intense. I invite you to come enjoy the show.

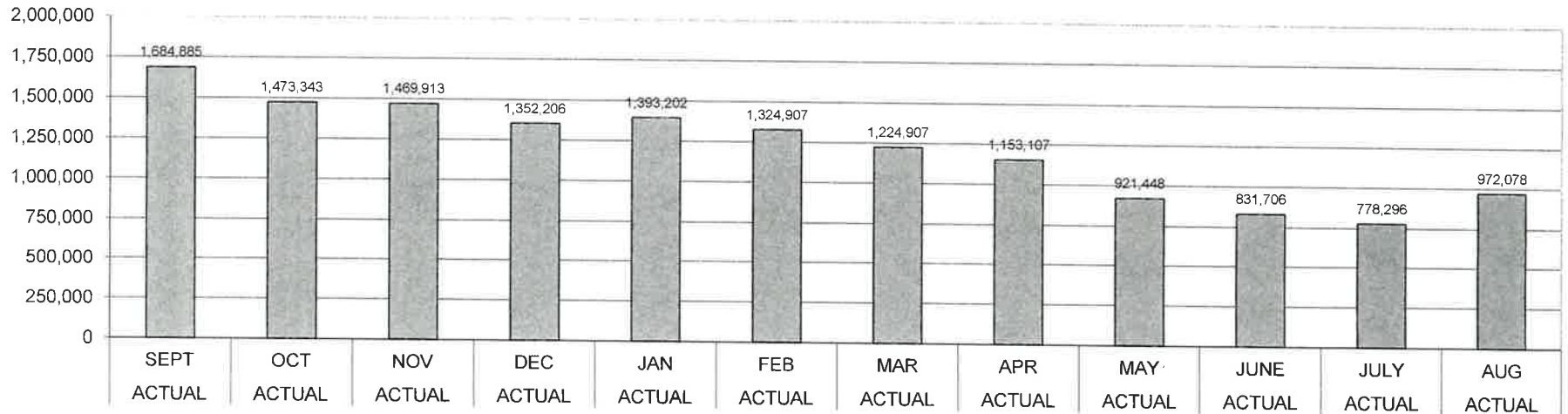




**CHEWELAH SCHOOL DISTRICT  
BUDGET STATUS 2020-2021**

	ACTUAL SEPT	ACTUAL OCT	ACTUAL NOV	ACTUAL DEC	ACTUAL JAN	ACTUAL FEB	ACTUAL MAR	ACTUAL APR	ACTUAL MAY	ACTUAL JUNE	ACTUAL JULY	ACTUAL AUG
<b>BUDGET</b>	11,618,451	11,618,451	11,618,451	11,618,451	11,618,451	11,618,451	11,618,451	11,618,451	11,618,451	11,618,451	11,618,451	11,618,451
<b>YTD EXPENDITURES</b>	1,070,262	1,925,471	2,727,509	3,517,734	4,489,284	5,297,534	6,206,968	7,066,990	7,924,731	8,883,881	9,806,539	10,646,373
<b>ENCUMBRANCES</b>	8,863,303	8,219,637	7,421,029	6,748,511	5,735,965	4,996,010	4,186,575	3,398,354	2,772,272	1,902,864	1,033,617	0
<b>BUDGET STATUS</b>	1,684,885	1,473,343	1,469,913	1,352,206	1,393,202	1,324,907	1,224,907	1,153,107	921,448	831,706	778,296	972,078
<b>PERCENTAGE OF BUDGET REMIANING</b>	15%	13%	13%	12%	12%	11%	11%	10%	8%	7%	7%	8%

**ESTIMATED BUDGET STATUS REPORT**



*Final 2020-2021*

10--General Fund-- FUND BALANCE -- AGENCY ACCOUNTS -- Revised -- BUDGET-STATUS-REPORT  
Fiscal Year 2020 (September 1, 2020 - August 31, 2021)

For the CHEWELAH SCHOOL DISTRICT School District for the Month of August, 2021

	ANNUAL BUDGET	ACTUAL FOR MONTH	ACTUAL FOR YEAR	ENCUMBRANCES	BALANCE	PERCENT
<b>A. REVENUES/OTHER FIN. SOURCES</b>						
1000 LOCAL TAXES	979,058	21,887.59	1,026,863.77		47,805.77-	104.88
2000 LOCAL SUPPORT NONTAX	143,240	1,832.42	39,148.48		104,091.52	27.33
3000 STATE, GENERAL PURPOSE	6,977,708	670,578.35	6,570,369.37		407,338.63	94.16
4000 STATE, SPECIAL PURPOSE	2,047,574	189,759.08	1,820,882.92		226,691.08	88.93
5000 FEDERAL, GENERAL PURPOSE	22,792	.00	17,363.28		5,428.72	76.18
6000 FEDERAL, SPECIAL PURPOSE	1,103,875	163,800.62	1,360,763.93		256,888.93-	123.27
7000 REVENUES FR OTH SCH DIST	29,500	.00	27,440.67		2,059.33	93.02
8000 OTHER AGENCIES AND ASSOCIATES	0	.00	.00		.00	0.00
9000 OTHER FINANCING SOURCES	29,200	.00	.00		29,200.00	0.00
<b>Total REVENUES/OTHER FIN. SOURCES</b>	<b>11,332,947</b>	<b>1,047,858.06</b>	<b>10,862,832.42</b>		<b>470,114.58</b>	<b>95.85</b>
<b>B. EXPENDITURES</b>						
00 Regular Instruction	5,962,544	416,528.40	5,461,896.89	0.00	500,647.11	91.60
10 Federal Stimulus	0	6,353.28	271,300.01	0.00	271,300.01-	0.00
20 Special Ed Instruction	1,370,548	94,043.67	1,263,973.04	0.00	106,574.96	92.22
30 Voc. Ed Instruction	436,170	53,767.13	442,320.05	0.00	6,150.05-	101.41
40 Skills Center Instruction	0	.00	.00	0.00	.00	0.00
50+60 Compensatory Ed Instruct.	1,053,361	74,504.98	964,737.37	0.00	88,623.63	91.59
70 Other Instructional Pgms	22,209	1,420.01-	32,281.25	0.00	10,072.25-	145.35
80 Community Services	14,000	.00	3,426.77	0.00	10,573.23	24.48
90 Support Services	2,759,619	196,057.15	2,206,437.99	0.00	553,181.01	79.95
<b>Total EXPENDITURES</b>	<b>11,618,451</b>	<b>839,834.60</b>	<b>10,646,373.37</b>	<b>0.00</b>	<b>972,077.63</b>	<b>91.63</b>
<b>C. OTHER FIN. USES TRANS. OUT (GL 536)</b>						
	0	.00	.00			
<b>D. OTHER FINANCING USES (GL 535)</b>						
	0	.00	.00			
<b>E. EXCESS OF REVENUES/OTHER FIN. SOURCES OVER (UNDER) EXP/OTH FIN USES (A-B-C-D)</b>						
	285,504-	208,023.46	216,459.05		501,963.05	175.82-
<b>F. TOTAL BEGINNING FUND BALANCE</b>						
	865,000		1,588,183.32			
<b>G. G/L 898 PRIOR YEAR ADJUSTMENTS (+OR-)</b>						
	XXXXXXXX		.00			
<b>H. TOTAL ENDING FUND BALANCE (E+F + OR - G)</b>						
	579,496		1,804,642.37			

I. ENDING FUND BALANCE ACCOUNTS:

G/L 810 Restricted For Other Items	0	.00
G/L 815 Restrict Unequalized Deduct Rev	0	.00
G/L 821 Restrictd for Carryover	0	33,974.84
G/L 825 Restricted for Skills Center	0	.00
G/L 828 Restricted for C/O of FS Rev	0	.00
G/L 830 Restricted for Debt Service	0	.00
G/L 835 Restrictd For Arbitrage Rebate	0	.00
G/L 840 Nonspnd FB - Invent/Prepd Itms	0	174,099.57
G/L 845 Restricted for Self-Insurance	0	.00
G/L 850 Restricted for Uninsured Risks	0	.00
G/L 870 Committed to Other Purposes	45,000	.00
G/L 872 Committd to Econmc Stabilizatn	0	.00
G/L 875 Assigned Contingencies	0	.00
G/L 884 Assigned to Other Cap Projects	0	.00
G/L 888 Assigned to Other Purposes	0	.00
G/L 890 Unassigned Fund Balance	534,496	1,596,567.96
G/L 891 Unassigned Min Fnd Bal Policy	0	.00
<u>TOTAL</u>	579,496	1,804,642.37



20--Capital Projects-- FUND BALANCE -- AGENCY ACCOUNTS -- Revised -- BUDGET-STATUS-REPORT  
Fiscal Year 2020 (September 1, 2020 - August 31, 2021)

For the CHEWELAH SCHOOL DISTRICT School District for the Month of August, 2021

<u>A. REVENUES/OTHER FIN. SOURCES</u>	<u>ANNUAL BUDGET</u>	<u>ACTUAL FOR MONTH</u>	<u>ACTUAL FOR YEAR</u>	<u>ENCUMBRANCES</u>	<u>BALANCE</u>	<u>PERCENT</u>
1000 Local Taxes	382,542	13,652.96	400,281.48		17,739.48-	104.64
2000 Local Support Nontax	2,500	24.56	308.19		2,191.81	12.33
3000 State, General Purpose	0	.00	.00		.00	0.00
4000 State, Special Purpose	0	.00	.00		.00	0.00
5000 Federal, General Purpose	8,750	.00	5,488.40		3,261.60	62.72
6000 Federal, Special Purpose	0	.00	.00		.00	0.00
7000 Revenues Fr Oth Sch Dist	0	.00	.00		.00	0.00
8000 Other Agencies and Associates	0	.00	.00		.00	0.00
9000 Other Financing Sources	12,000	.00	.00		12,000.00	0.00
<u>Total REVENUES/OTHER FIN. SOURCES</u>	405,792	13,677.52	406,078.07		286.07-	100.07
<u>B. EXPENDITURES</u>						
10 Sites	0	.00	.00	0.00	.00	0.00
20 Buildings	0	.00	.00	0.00	.00	0.00
30 Equipment	466,592	46,637.22	166,643.58	0.00	299,948.42	35.72
40 Energy	0	.00	.00	0.00	.00	0.00
50 Sales & Lease Expenditure	0	3,500.00	3,500.00	0.00	3,500.00-	0.00
60 Bond Issuance Expenditure	0	.00	.00	0.00	.00	0.00
90 Debt	0	.00	.00	0.00	.00	0.00
<u>Total EXPENDITURES</u>	466,592	50,137.22	170,143.58	0.00	296,448.42	36.47
C. <u>OTHER FIN. USES TRANS. OUT (GL 536)</u>	29,200	.00	.00			
D. <u>OTHER FINANCING USES (GL 535)</u>	0	.00	.00			
E. <u>EXCESS OF REVENUES/OTHER FIN. SOURCES OVER (UNDER) EXP/OTH FIN USES (A-B-C-D)</u>	90,000-	36,459.70-	235,934.49		325,934.49	362.15-
F. <u>TOTAL BEGINNING FUND BALANCE</u>	90,000		105,533.04			
G. <u>G/L 898 PRIOR YEAR ADJUSTMENTS (+OR-)</u>	XXXXXXXX		.00			
H. <u>TOTAL ENDING FUND BALANCE (E+F + OR - G)</u>	0		341,467.53			

I. ENDING FUND BALANCE ACCOUNTS:

G/L 810 Restricted For Other Items	0	.00
G/L 825 Restricted for Skills Center	0	.00
G/L 830 Restricted for Debt Service	0	.00
G/L 835 Restricted For Arbitrage Rebate	0	.00
G/L 840 Nonspd FB - Invent/Prepd Itms	0	.00
G/L 850 Restricted for Uninsured Risks	0	.00
G/L 861 Restricted from Bond Proceeds	0	.00
G/L 862 Committed from Levy Proceeds	2,761-	326,268.22
G/L 863 Restricted from State Proceeds	0	.00
G/L 864 Restricted from Fed Proceeds	0	.00
G/L 865 Restricted from Other Proceeds	0	.00
G/L 866 Restricted from Impact Proceeds	0	.00
G/L 867 Restricted from Mitigation Fees	0	.00
G/L 869 Restricted fr Undistr Proceeds	0	.00
G/L 870 Committed to Other Purposes	0	.00
G/L 889 Assigned to Fund Purposes	2,761	15,199.31
G/L 890 Unassigned Fund Balance	0	.00
<u>TOTAL</u>	<u>0</u>	<u>341,467.53</u>

30--Debt Service Fund-- FUND BALANCE -- AGENCY ACCOUNTS -- Revised -- BUDGET-STATUS-REPORT  
Fiscal Year 2020 (September 1, 2020 - August 31, 2021)

For the CHEWELAH SCHOOL DISTRICT School District for the Month of August, 2021

A. REVENUES/OTHER FIN. SOURCES	ANNUAL BUDGET	ACTUAL FOR MONTH	ACTUAL FOR YEAR	ENCUMBRANCES	BALANCE	PERCENT
1000 Local Taxes	0	.00	.00		.00	0.00
2000 Local Support Nontax	250	1.45	33.16		216.84	13.26
3000 State, General Purpose	0	.00	.00		.00	0.00
5000 Federal, General Purpose	0	.00	.00		.00	0.00
9000 Other Financing Sources	0	.00	.00		.00	0.00
<u>Total REVENUES/OTHER FIN. SOURCES</u>	250	1.45	33.16		216.84	13.26
<b>B. EXPENDITURES</b>						
Matured Bond Expenditures	0	.00	.00	0.00	.00	0.00
Interest On Bonds	0	.00	.00	0.00	.00	0.00
Interfund Loan Interest	0	.00	.00	0.00	.00	0.00
Bond Transfer Fees	0	.00	.00	0.00	.00	0.00
Arbitrage Rebate	0	.00	.00	0.00	.00	0.00
Underwriter's Fees	0	.00	.00	0.00	.00	0.00
<u>Total EXPENDITURES</u>	0	.00	.00	0.00	.00	0.00
C. <u>OTHER FIN. USES TRANS. OUT (GL 536)</u>	12,000	.00	.00			
D. <u>OTHER FINANCING USES (GL 535)</u>	0	.00	.00			
E. <u>EXCESS OF REVENUES/OTHER FIN. SOURCES</u> <u>OVER(UNDER) EXPENDITURES (A-B-C-D)</u>	11,750-	1.45	33.16		11,783.16	100.28-
F. <u>TOTAL BEGINNING FUND BALANCE</u>	12,000		22,766.34			
G. <u>G/L 898 PRIOR YEAR ADJUSTMENTS(+OR-)</u>	XXXXXXXXX		.00			
H. <u>TOTAL ENDING FUND BALANCE</u> <u>(E+F + OR - G)</u>	250		22,799.50			
<b>I. ENDING FUND BALANCE ACCOUNTS:</b>						
G/L 810 Restricted for Other Items	0		.00			
G/L 830 Restricted for Debt Service	250		22,799.50			
G/L 835 Restrictd For Arbitrage Rebate	0		.00			
G/L 870 Committed to Other Purposes	0		.00			
G/L 889 Assigned to Fund Purposes	0		.00			
G/L 890 Unassigned Fund Balance	0		.00			
<u>TOTAL</u>	250		22,799.50			

40--Associated Student Body Fund-- FUND BALANCE -- AGENCY ACCOUNTS -- Revised -- BUDGET-STATUS-REPORT  
Fiscal Year 2020 (September 1, 2020 - August 31, 2021)

For the CHEWELAH SCHOOL DISTRICT School District for the Month of August, 2021

	ANNUAL BUDGET	ACTUAL FOR MONTH	ACTUAL FOR YEAR	ENCUMBRANCES	BALANCE	PERCENT
<b>A. REVENUES</b>						
1000 General Student Body	65,000	17.09-	9,653.10		55,346.90	14.85
2000 Athletics	134,000	4,300.00	13,384.00		120,616.00	9.99
3000 Classes	11,500	.00	.00		11,500.00	0.00
4000 Clubs	44,100	846.81	11,906.57		32,193.43	27.00
6000 Private Moneys	10,500	470.00	9,673.00		827.00	92.12
<u>Total REVENUES</u>	265,100	5,599.72	44,616.67		220,483.33	16.83
<b>B. EXPENDITURES</b>						
1000 General Student Body	52,750	1,634.55	11,403.00	0.00	41,347.00	21.62
2000 Athletics	114,000	.00	17,023.94	0.00	96,976.06	14.93
3000 Classes	11,500	.00	114.74	0.00	11,385.26	1.00
4000 Clubs	42,650	.00	9,954.10	0.00	32,695.90	23.34
6000 Private Moneys	10,500	.00	9,851.17	0.00	648.83	93.82
<u>Total EXPENDITURES</u>	231,400	1,634.55	48,346.95	0.00	183,053.05	20.89
<b>C. EXCESS OF REVENUES</b>						
<u>OVER(UNDER) EXPENDITURES</u>	<u>(A-B)</u>	33,700	3,965.17	3,730.28-	37,430.28-	111.07-
<b>D. TOTAL BEGINNING FUND BALANCE</b>						
	90,000		82,586.12			
<b>E. G/L 898 PRIOR YEAR ADJUSTMENTS (+OR-)</b>						
	XXXXXXXXXX		.00			
<b>F. TOTAL ENDING FUND BALANCE</b>						
<u>C+D + OR - E</u>	123,700		78,855.84			
<b>G. ENDING FUND BALANCE ACCOUNTS:</b>						
G/L 810 Restricted for Other Items	0		.00			
G/L 819 Restricted for Fund Purposes	123,700		78,855.84			
G/L 840 Nonspnd FB - Invent/Prepd Itms	0		.00			
G/L 850 Restricted for Uninsured Risks	0		.00			
G/L 870 Committed to Other Purposes	0		.00			
G/L 889 Assigned to Fund Purposes	0		.00			
G/L 890 Unassigned Fund Balance	0		.00			
<u>TOTAL</u>	123,700		78,855.84			

90--Transportation Vehicle Fund-- FUND BALANCE -- AGENCY ACCOUNTS -- Revised -- BUDGET-STATUS-REPORT  
Fiscal Year 2020 (September 1, 2020 - August 31, 2021)

For the CHEWELAH SCHOOL DISTRICT School District for the Month of August, 2021

<u>A. REVENUES/OTHER FIN. SOURCES</u>	<u>ANNUAL BUDGET</u>	<u>ACTUAL FOR MONTH</u>	<u>ACTUAL FOR YEAR</u>	<u>ENCUMBRANCES</u>	<u>BALANCE</u>	<u>PERCENT</u>
1000 Local Taxes	0	.00	.00		.00	0.00
2000 Local Nontax	1,500	3.21	107.91		1,392.09	7.19
3000 State, General Purpose	0	.00	.00		.00	0.00
4000 State, Special Purpose	110,000	125,080.38	125,080.38		15,080.38	113.71
5000 Federal, General Purpose	0	.00	.00		.00	0.00
6000 Federal, Special Purpose	0	.00	.00		.00	0.00
8000 Other Agencies and Associates	0	.00	.00		.00	0.00
9000 Other Financing Sources	0	.00	4,750.00		4,750.00	0.00
<u>A. TOTAL REV/OTHER FIN. SRCS (LESS TRANS)</u>	<u>111,500</u>	<u>125,083.59</u>	<u>129,938.29</u>		<u>18,438.29</u>	<u>116.54</u>
<u>B. 9900 TRANSFERS IN FROM GF</u>	<u>0</u>	<u>.00</u>	<u>.00</u>		<u>.00</u>	<u>0.00</u>
<u>C. Total REV./OTHER FIN. SOURCES</u>	<u>111,500</u>	<u>125,083.59</u>	<u>129,938.29</u>		<u>18,438.29</u>	<u>116.54</u>
<u>D. EXPENDITURES</u>						
Type 30 Equipment	265,000	.00	113,817.48	0.00	151,182.52	42.95
Type 60 Bond Levy Issuance	0	.00	.00	0.00	.00	0.00
Type 90 Debt	0	.00	.00	0.00	.00	0.00
<u>Total EXPENDITURES</u>	<u>265,000</u>	<u>.00</u>	<u>113,817.48</u>	<u>0.00</u>	<u>151,182.52</u>	<u>42.95</u>
<u>E. OTHER FIN. USES TRANS. OUT (GL 536)</u>	<u>0</u>	<u>.00</u>	<u>.00</u>			
<u>F. OTHER FINANCING USES (GL 535)</u>	<u>0</u>	<u>.00</u>	<u>.00</u>			
<u>G. EXCESS OF REVENUES/OTHER FIN SOURCES</u>						
<u>OVER (UNDER) EXP/OTH FIN USES (C-D-E-F)</u>	<u>153,500-</u>	<u>125,083.59</u>	<u>16,120.81</u>		<u>169,620.81</u>	<u>110.50-</u>
<u>H. TOTAL BEGINNING FUND BALANCE</u>	<u>153,500</u>		<u>155,300.20</u>			
<u>I. G/L 898 PRIOR YEAR ADJUSTMENTS (+OR-)</u>	<u>XXXXXXXXX</u>		<u>.00</u>			
<u>J. TOTAL ENDING FUND BALANCE</u>	<u>0</u>		<u>171,421.01</u>			
<u>(G+H + OR - I)</u>						
<u>K. ENDING FUND BALANCE ACCOUNTS:</u>						
G/L 810 Restricted For Other Items	0		.00			
G/L 819 Restricted for Fund Purposes	0		171,421.01			
G/L 830 Restricted for Debt Service	0		.00			
G/L 835 Restrictd For Arbitrage Rebate	0		.00			
G/L 850 Restricted for Uninsured Risks	0		.00			
G/L 889 Assigned to Fund Purposes	0		.00			
G/L 890 Unassigned Fund Balance	0		.00			
<u>TOTAL</u>	<u>0</u>		<u>171,421.01</u>			

CHEWELAH SCHOOL DISTRICT ENROLLMENT 2021-2022

10/5/2021 10:06 AM

FTE	Budget	Sept.	Oct.	Nov.	Dec.	Jan.	Feb.	Mar.	Apr.	May	June	Average	
COUNT	2020-2021												
K	50	49.50	57.50									53.50	
1	46	34.00	33.00									33.50	
2	43	48.00	48.00									48.00	
3	60	64.00	62.00									63.00	
4	38	36.00	38.00									37.00	
5	57	57.00	57.00									57.00	
6	55	55.00	56.00									55.50	
7	48	46.34	47.34									46.84	
8	53	56.02	56.02									56.02	
9	71	76.00	76.00									76.00	
10	65	67.51	67.51									67.51	
11	68	56.42	58.42									57.42	
12	53	59.44	60.10									59.77	
<b>TOTAL FTE</b>	<b>707</b>	<b>705.23</b>	<b>716.89</b>	<b>0.00</b>	<b>0.00</b>	<b>0.00</b>	<b>0.00</b>	<b>0.00</b>	<b>0.00</b>	<b>0.00</b>	<b>0.00</b>	<b>711.06</b>	<b>FTE</b>
GESS	282	300.00	309.00									304.50	
JHS JR/SR	275	292.09	292.41									292.25	
QUARTZITE	150	113.14	115.48									114.31	
	707	705.23	716.89	0.00	0.00	0.00	0.00	0.00	0.00	0.00	0.00	711.06	4.06
<b>PLUS OR MINUS</b>													
<b>FTE BUDGET</b>		-1.77	9.89	-707	-707	-707	-707	-707	-707	-707	-707	4.06	
<b>STUDENT</b>	<b>Budget</b>	<b>Sept.</b>	<b>Oct.</b>	<b>Nov.</b>	<b>Dec.</b>	<b>Jan.</b>	<b>Feb.</b>	<b>Mar.</b>	<b>Apr.</b>	<b>May</b>	<b>June</b>	<b>Average</b>	
COUNT K	50	52	60									56.00	
1	46	34	33									33.50	
2	43	48	48									48.00	
3	60	64	62									63.00	
4	38	36	38									37.00	
5	57	57	57									57.00	
6	55	55	56									55.50	
7	48	47	48									47.50	
8	53	57	57									57.00	
9	71	76	76									76.00	
10	65	68	68									68.00	
11	68	67	69									68.00	
12	53	72	70									71.00	
<b>TOTAL Head Count</b>	<b>707</b>	<b>733</b>	<b>742</b>	<b>0</b>	<b>0</b>	<b>0</b>	<b>0</b>	<b>0</b>	<b>0</b>	<b>0</b>	<b>0</b>	<b>737.50</b>	<b>COUNT</b>
K-6	349	346	354	0	0	0	0	0	0	0	0	70.00	
7-12	358	387	388	0	0	0	0	0	0	0	0	77.50	
<b>TOTAL Head Count</b>	<b>707</b>	<b>733</b>	<b>742</b>	<b>0</b>	<b>0</b>	<b>0</b>	<b>0</b>	<b>0</b>	<b>0</b>	<b>0</b>	<b>0</b>	<b>147.50</b>	
<b>RUNNING START</b>		<b>Oct.</b>	<b>Nov.</b>	<b>Dec.</b>	<b>Jan.</b>	<b>Feb.</b>	<b>Mar.</b>	<b>Apr.</b>	<b>May</b>	<b>June</b>	<b>Average</b>		
Total Students HC	22	29.00										29.00	
Running Start Only		2.00										2.00	
NonVoc	22	23.29										23.29	
Voc	1	0.33										0.33	
Total FTE	23	0.00	23.62	0.00	0.00	0.00	0.00	0.00	0.00	0.00	0.00	23.62	
<b>SPECIAL SERVICES</b>		<b>Sept.</b>	<b>Oct.</b>	<b>Nov.</b>	<b>Dec.</b>	<b>Jan.</b>	<b>Feb.</b>	<b>Mar.</b>	<b>Apr.</b>	<b>May</b>	<b>June</b>	<b>Average</b>	
SPED 3-5	7	4	4									4.00	
SPED Tier I >80%	77	88	91									89.50	
SPED Tier II <80%	42	45	41									43.00	
Total SPED FTE	126	137	136	0	0	0	0	0	0	0	0	27.30	
+or- STUD/MO		11	-1	-136	0	0	0	0	0	0	0	-12.60	
+or- BUDGET		11	10									10.50	
<b>VOCATIONAL</b>		<b>Sept.</b>	<b>Oct.</b>	<b>Nov.</b>	<b>Dec.</b>	<b>Jan.</b>	<b>Feb.</b>	<b>Mar.</b>	<b>Apr.</b>	<b>May</b>	<b>June</b>	<b>Average</b>	
FTE	37	62.22	63.07									62.65	
7TH & 8TH	14	10.2	9.86									10.03	
+or- BUDGET		21.42	21.93									21.68	
<b>BILINGUAL</b>	<b>0</b>	<b>1</b>	<b>1</b>									<b>1.00</b>	
BILINGUAL EXITED		0	0	0	0	0	0	0	0	0	0	0	
<b>OPEN DOORS</b>		<b>Sept.</b>	<b>Oct.</b>	<b>Nov.</b>	<b>Dec.</b>	<b>Jan.</b>	<b>Feb.</b>	<b>Mar.</b>	<b>Apr.</b>	<b>May</b>	<b>June</b>	<b>Average</b>	
Headcount	10	11	13									12.00	
FTE	10	11	13									12.00	
<b>FTE Grand Totl</b>	<b>740.00</b>	<b>716.23</b>	<b>753.51</b>									<b>734.87</b>	<b>-5.13</b>

**CHEWELAH SCHOOL DISTRICT NO. 36  
FINANCIAL REPORT  
2021/2022**

<b>Beginning Cash and Investment Balance:</b>	
240 Treasurer's Balance - September 1, 2021	\$444,355.61
450 Investment Balance - September 1, 2021	\$1,582,311.05
241 Warrants Outstanding - September 1, 2021	<u>(\$426,455.01)</u>
<b>TOTAL CASH AND INVESTMENT BALANCE - September 1, 2021</b>	<u><u>\$1,600,211.65</u></u>

**September 30, 2021**

**CASH RECEIPTS FOR THE MONTH:**

State Apportionment	\$785,902.66
District Deposits	\$2,777.08
Investments Earnings	\$104.99
Timber Excise Tax	\$0.00
Federal Forests	\$0.00
Federal In-Lieu-Of Taxes	\$0.00
Local Property Tax	\$65,320.26
Other:	<u>\$0.00</u>
<b>TOTAL RECEIPTS</b>	<b>\$854,104.99</b>

**EXPENDITURES FOR MONTH:**

Accounts Payable	\$132,930.98
Payroll	\$897,502.71
Transfer to Debt Service	\$0.00
Other: Canceled Warrants	\$0.00
Other: ACH Return	<u>\$0.00</u>
<b>TOTAL EXPENDITURES</b>	<b><u>\$1,030,433.69</u></b>

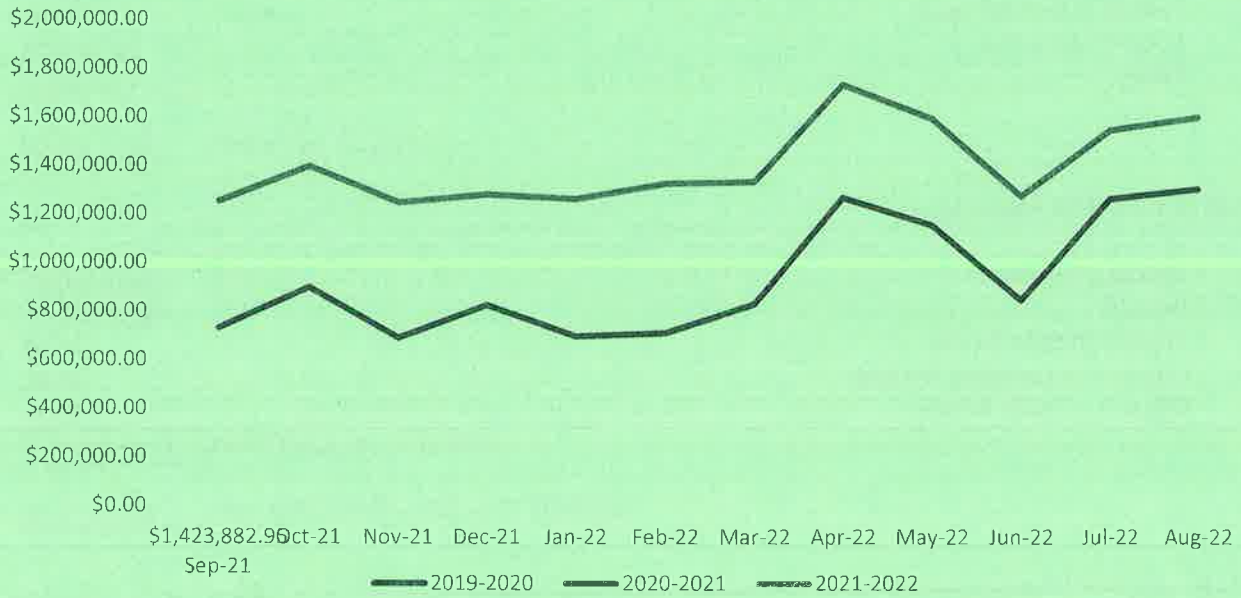
**MONTHLY INCREASE/(DECREASE) (\$176,328.70)**

<b>Ending Cash and Investment Balance</b>	
240 Treasurer's Balance	\$355,692.58
450 Investment Balance	\$1,403,323.87
241 Warrants Outstanding	<u>(\$335,133.50)</u>
<b>CASH AND INVESTMENT BALANCE AS PER STEVENS COUNTY TREASURER'S</b>	<u><u>\$1,423,882.95</u></u>

<b>CAPITAL PROJECTS FUND CASH &amp; INVESTMENT BALANCE:</b>	<u>\$368,621.37</u>
<b>DEBT SERVICE FUND CASH &amp; INVESTMENT BALANCE:</b>	<u>\$22,801.05</u>
<b>A.S.B. FUND CASH &amp; INVESTMENT BALANCE:</b>	<u>\$79,138.86</u>
<b>TRANSPORTATION VEHICLE FUND CASH &amp; INVESTMENT BALANCE:</b>	<u><u>\$171,432.65</u></u>

2021-2022 Financial Report					
STEVENS COUNTY TREASURER'S ENDING BALANCE					
Sep-19	\$729,621.47	Sep-20	\$1,253,770.69	Sep-21	\$1,423,882.95
Oct-19	\$897,701.70	Oct-20	\$1,397,150.63	Oct-21	
Nov-19	\$690,564.88	Nov-20	\$1,247,908.17	Nov-21	
Dec-19	\$825,477.61	Dec-20	\$1,280,897.48	Dec-21	
Jan-20	\$696,923.14	Jan-21	\$1,262,436.43	Jan-22	
Feb-20	\$711,933.16	Feb-21	\$1,327,993.02	Feb-22	
Mar-20	\$830,200.17	Mar-21	\$1,335,511.99	Mar-22	
Apr-20	\$1,271,000.43	Apr-21	\$1,737,993.21	Apr-22	
May-20	\$1,156,011.59	May-21	\$1,596,745.55	May-22	
Jun-20	\$847,502.15	Jun-21	\$1,277,412.71	Jun-22	
Jul-20	\$1,265,319.49	Jul-21	\$1,549,087.60	Jul-22	
Aug-20	\$1,305,233.44	Aug-21	\$1,600,211.65	Aug-22	

Treasurer's Ending Balance





**CHEWELAH SCHOOL DISTRICT #36**

**FINANCIAL REPORT**

**MONTHLY REVENUES OVER OR (UNDER) EXPENDITURES FOR LAST THREE YEARS**

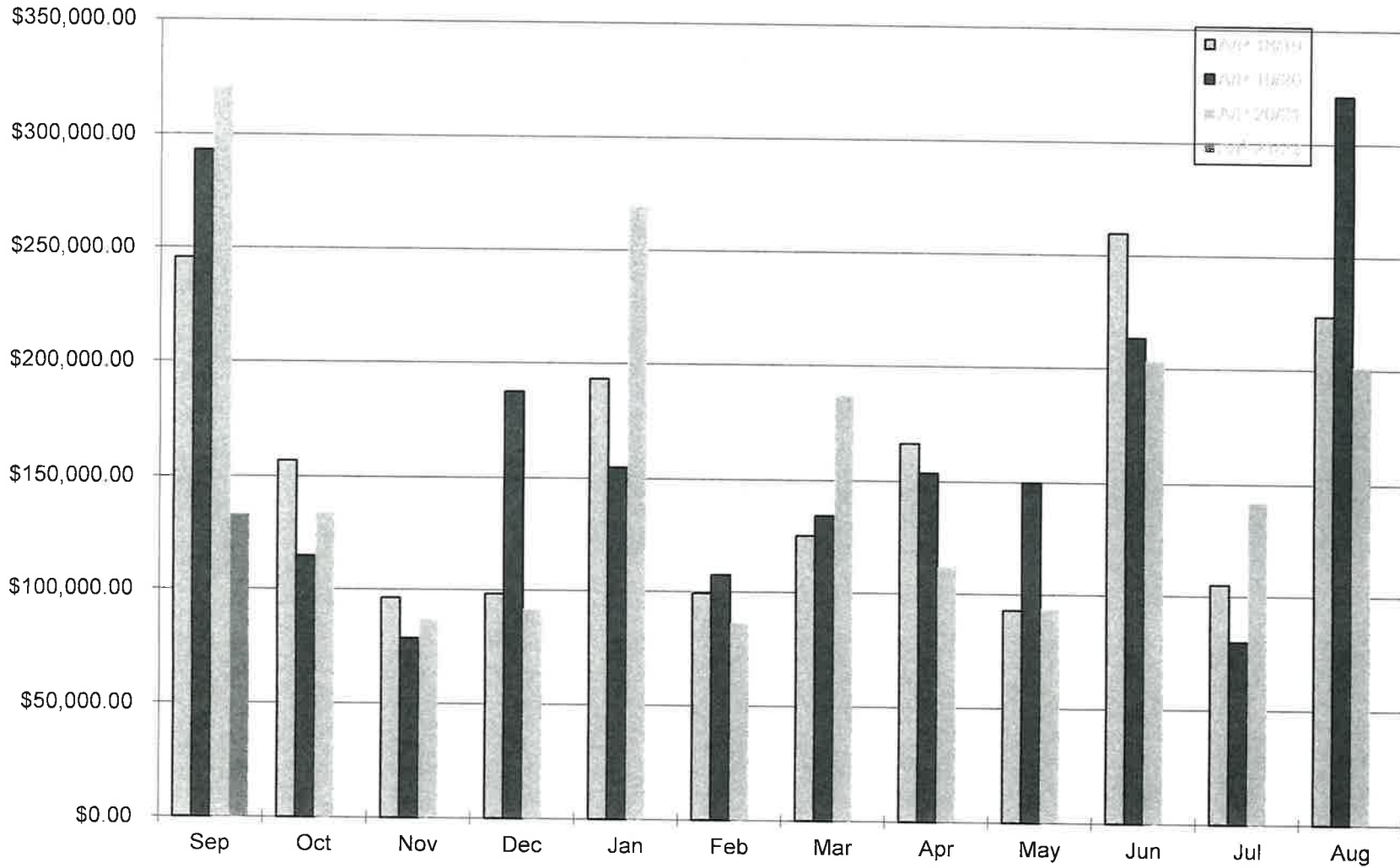
	2019-2020	2020-2021	2021-2022		
MONTH	MONTHLY +/-	MONTHLY +/-	REVENUES	EXPENDITURES	MONTHLY +/-
SEPTEMBER	\$ (200,919)	\$ (51,463)	\$854,105	\$1,030,434	(\$176,329)
OCTOBER	\$ 168,080	\$ 143,380			\$0
NOVEMBER	\$ (207,137)	\$ (149,242)			\$0
DECEMBER	\$ 134,913	\$ 32,989			\$0
JANUARY	\$ (128,554)	\$ (18,461)			\$0
FEBRUARY	\$ 15,010	\$ 65,557			\$0
MARCH	\$ 118,267	\$ 7,519			\$0
APRIL	\$ 440,800	\$ 402,481			\$0
MAY	\$ (114,989)	\$ (141,248)			\$0
JUNE	\$ (308,509)	\$ (319,333)			\$0
JULY	\$ 417,817	\$ 271,675			\$0
AUGUST	\$ 39,914	\$ 51,124			\$0

**CHEWELAH SCHOOL DISTRICT #36  
FINANCIAL REPORT**

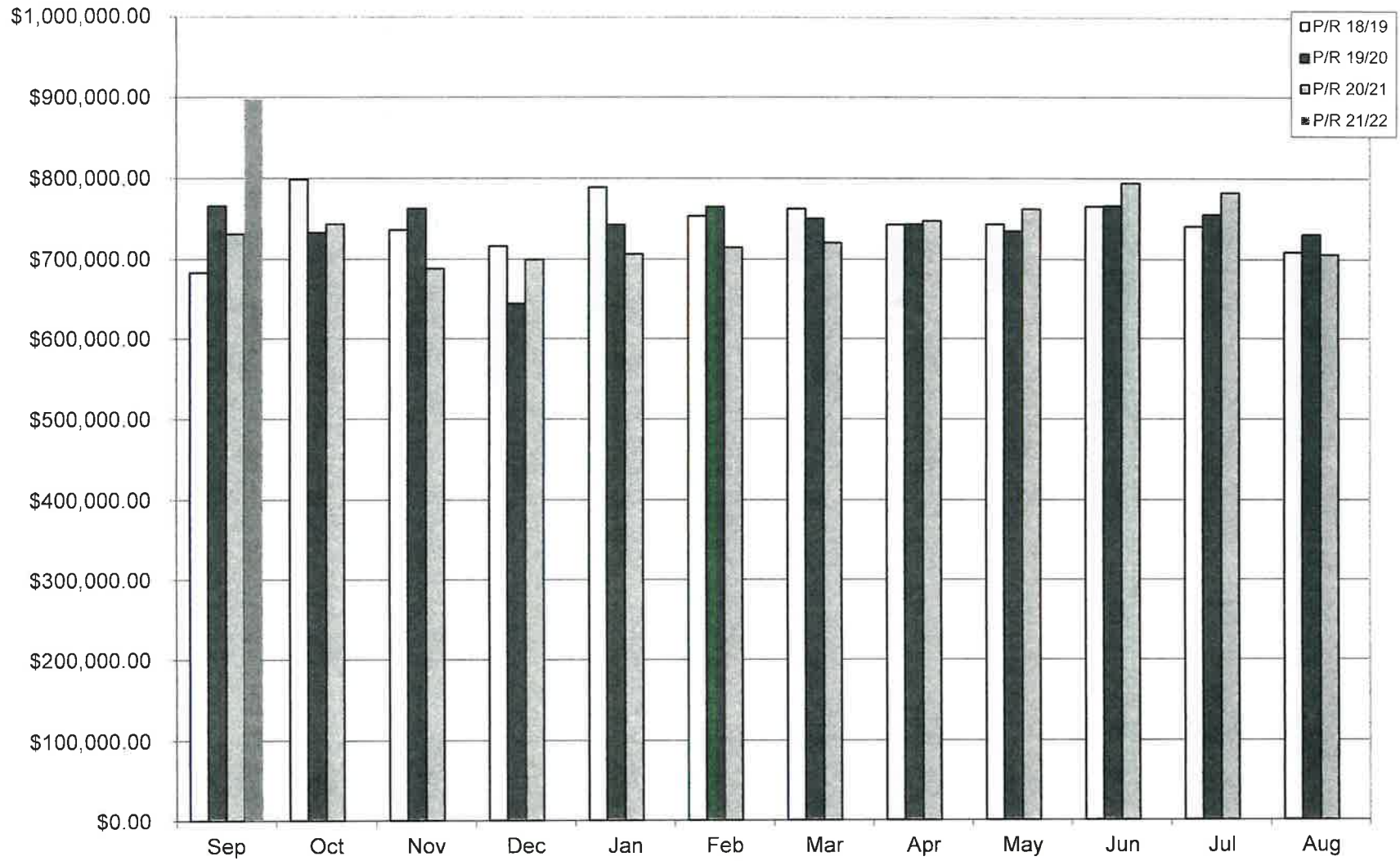
**MONTHLY ACCOUNTS PAYABLE AND PAYROLL AMOUNTS FOR FOUR YEARS**

MONTH/YR	A/P 18/19	P/R 18/19	MONTH/YR	A/P 19/20	P/R 19/20	MONTH/YR	A/P 20/21	P/R 20/21	MONTH/YR	A/P 21/22	P/R 21/22
SEPT	\$245,513.49	\$683,075.78	SEPT	\$293,016.35	\$765,848.80	SEPT	\$320,943.66	\$730,841.26	SEPT	\$132,930.98	\$897,502.71
OCT	\$156,987.80	\$798,777.74	OCT	\$114,812.95	\$732,874.54	OCT	\$134,196.81	\$743,594.95	OCT		
NOV	\$96,363.06	\$736,380.75	NOV	\$78,601.39	\$762,509.47	NOV	\$87,306.10	\$688,425.04	NOV		
DEC	\$98,432.20	\$715,981.04	DEC	\$187,560.31	\$644,412.71	DEC	\$91,955.56	\$699,636.54	DEC		
JAN	\$193,374.15	\$789,184.43	JAN	\$154,814.32	\$742,961.22	JAN	\$269,975.96	\$706,445.88	JAN		
FEB	\$99,311.85	\$753,617.85	FEB	\$107,557.53	\$764,946.65	FEB	\$86,537.03	\$714,337.74	FEB		
MAR	\$125,292.34	\$762,456.45	MAR	\$134,285.19	\$750,446.00	MAR	\$187,475.59	\$720,296.39	MAR		
APR	\$166,536.07	\$743,142.49	APR	\$153,673.34	\$743,588.27	APR	\$111,966.95	\$747,822.30	APR		
MAY	\$93,000.79	\$743,564.69	MAY	\$149,870.79	\$734,914.65	MAY	\$93,966.78	\$762,271.69	MAY		
JUNE	\$259,767.25	\$765,652.08	JUNE	\$213,271.98	\$766,136.85	JUNE	\$203,455.20	\$794,362.90	JUNE		
JULY	\$104,966.63	\$740,888.00	JULY	\$79,853.83	\$755,548.19	JULY	\$142,173.44	\$782,335.75	JULY		
AUG	\$223,413.08	\$708,928.75	AUG	\$320,943.66	\$730,841.26	AUG	\$201,480.60	\$706,027.73	AUG		
<b>TOTAL</b>	<b>\$1,862,958.71</b>	<b>\$8,941,650.05</b>	<b>TOTAL</b>	<b>\$1,988,261.64</b>	<b>\$8,895,028.61</b>	<b>TOTAL</b>	<b>\$1,931,433.68</b>	<b>\$8,796,398.17</b>	<b>TOTAL</b>	<b>\$132,930.98</b>	<b>\$897,502.71</b>

## CHEWELAH SCHOOL DISTRICT NO. 36 - ACCOUNT PAYABLE EXPENDITURES

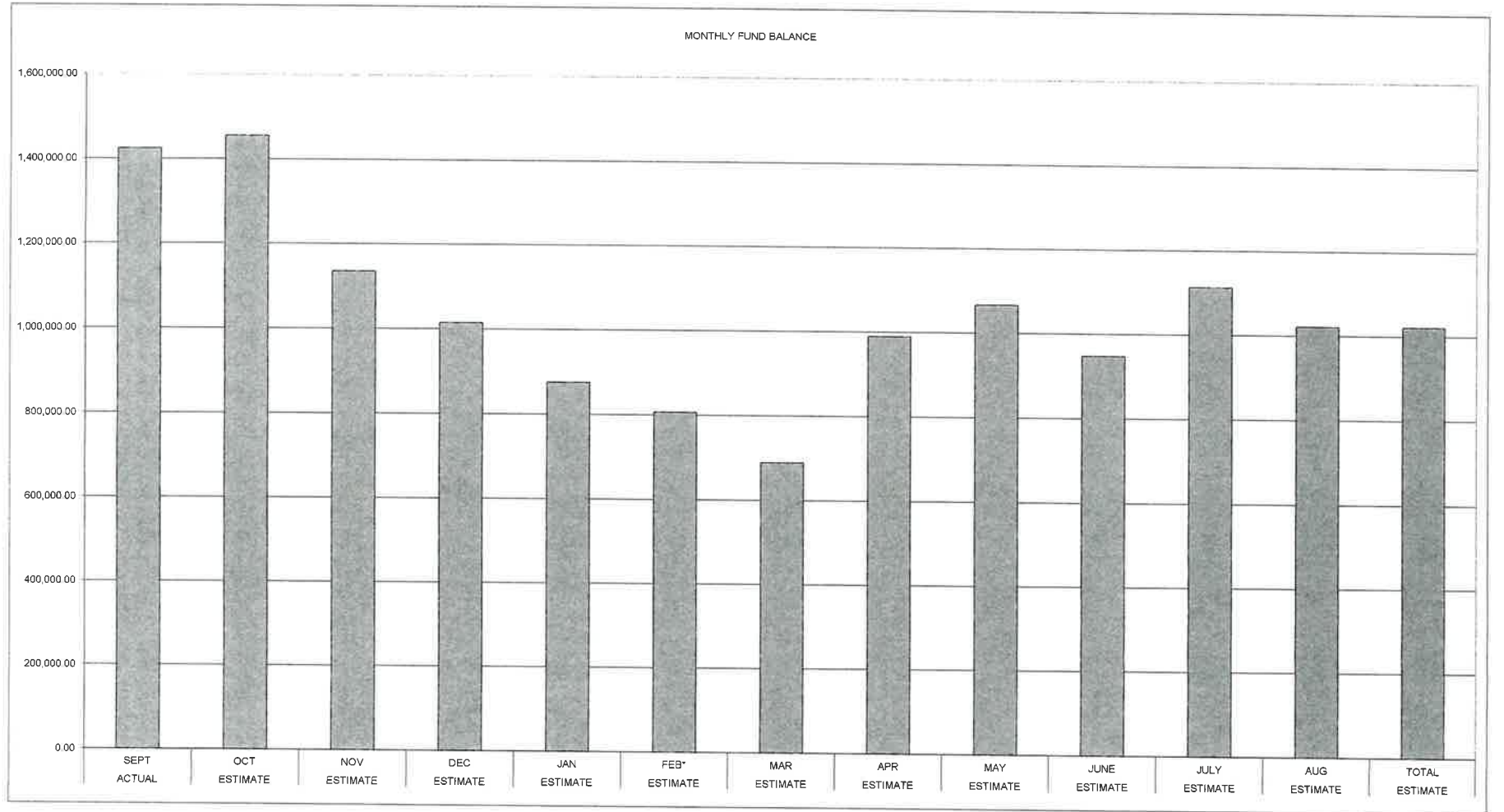


### CHEWELAH SCHOOL DISTRICT NO.36 - PAYROLL EXPENDITURES



**CHEWELAH SCHOOL DISTRICT  
CASH FLOW 2021-2022**

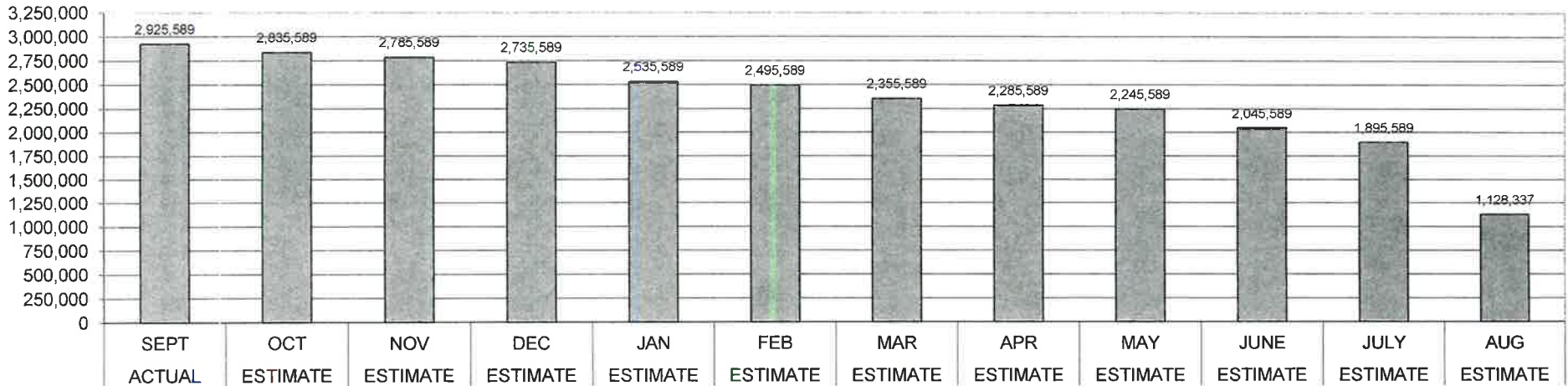
	ACTUAL SEPT	ESTIMATE OCT	ESTIMATE NOV	ESTIMATE DEC	ESTIMATE JAN	ESTIMATE FEB*	ESTIMATE MAR	ESTIMATE APR	ESTIMATE MAY	ESTIMATE JUNE	ESTIMATE JULY	ESTIMATE AUG	ESTIMATE TOTAL
						*Transp Adj.							
<b>BEGINNING FUND BALANCE</b>	1,600,211.65	1,423,882.95	1,454,882.95	1,135,782.95	1,014,932.95	875,082.95	807,082.95	688,682.95	989,182.95	1,067,282.95	947,382.95	1,113,582.95	1,600,211.65
<b>REVENUE</b>													
	9%	8%	5%	9%	8.5%	9%	9%	9%	5%	6%	12.5%	10%	100%
<b>APPORTIONMENT</b>	785,902.66	770,000.00	570,000.00	820,000.00	940,000.00	850,000.00	750,000.00	880,000.00	950,000.00	950,000.00	1,200,000.00	925,000.00	10,390,902.66
<b>PROPERTY TAXES</b>	65,320.26	245,000.00	60,000.00	5,000.00	2,000.00	5,000.00	170,000.00	370,000.00	60,000.00	15,000.00	4,000.00	8,000.00	1,009,320.26
<b>LOCAL RECEIPTS</b>	2,777.08	4,000.00	500.00	4,000.00	18,000.00	3,000.00	1,500.00	2,500.00	8,000.00	15,000.00	12,000.00	10,000.00	81,277.08
<b>OTHER</b>	104.99	2,000.00	400.00	150.00	150.00	14,000.00	100.00	18,000.00	100.00	100.00	200.00	15,000.00	50,304.99
	854,104.99	1,021,000.00	630,900.00	829,150.00	960,150.00	872,000.00	921,600.00	1,270,500.00	1,018,100.00	980,100.00	1,216,200.00	958,000.00	11,531,804.99
<b>EXPENDITURES</b>													
<b>A/P</b>	132,930.98	140,000.00	100,000.00	100,000.00	250,000.00	90,000.00	190,000.00	120,000.00	90,000.00	200,000.00	150,000.00	200,000.00	1,762,930.98
<b>PR</b>	897,502.71	850,000.00	850,000.00	850,000.00	850,000.00	850,000.00	850,000.00	850,000.00	850,000.00	900,000.00	900,000.00	850,000.00	10,347,502.71
<b>TRANSFER</b>													0.00
<b>ENDING FUND BALANCE</b>	1,423,882.95	1,454,882.95	1,135,782.95	1,014,932.95	875,082.95	807,082.95	688,682.95	989,182.95	1,067,282.95	947,382.95	1,113,582.95	1,021,582.95	1,021,582.95



**CHEWELAH SCHOOL DISTRICT  
BUDGET STATUS 2021-2022**

	ACTUAL SEPT	ESTIMATE OCT	ESTIMATE NOV	ESTIMATE DEC	ESTIMATE JAN	ESTIMATE FEB	ESTIMATE MAR	ESTIMATE APR	ESTIMATE MAY	ESTIMATE JUNE	ESTIMATE JULY	ESTIMATE AUG
<b>BUDGET</b>	13,357,086	13,357,086	13,357,086	13,357,086	13,357,086	13,357,086	13,357,086	13,357,086	13,357,086	13,357,086	13,357,086	13,357,086
<b>YTD EXPENDITURES</b>	1,148,749	2,138,749	3,088,749	4,038,749	5,138,749	6,078,749	7,118,749	8,088,749	9,028,749	10,128,749	11,178,749	12,228,749
<b>ENCUMBRANCES</b>	9,282,749	8,382,749	7,482,749	6,582,749	5,682,749	4,782,749	3,882,749	2,982,749	2,082,749	1,182,749	282,749	0
<b>BUDGET STATUS</b>	2,925,589	2,835,589	2,785,589	2,735,589	2,535,589	2,495,589	2,355,589	2,285,589	2,245,589	2,045,589	1,895,589	1,128,337
<b>PERCENTAGE OF BUDGET REMIANING</b>	22%	21%	21%	20%	19%	19%	18%	17%	17%	15%	14%	8%

**ESTIMATED BUDGET STATUS REPORT**



10--General Fund-- FUND BALANCE -- AGENCY ACCOUNTS -- Revised -- BUDGET-STATUS-REPORT  
Fiscal Year 2021 (September 1, 2021 - August 31, 2022)

For the CHEWELAH SCHOOL DISTRICT School District for the Month of September, 2021

<u>A. REVENUES/OTHER FIN. SOURCES</u>	<u>ANNUAL BUDGET</u>	<u>ACTUAL FOR MONTH</u>	<u>ACTUAL FOR YEAR</u>	<u>ENCUMBRANCES</u>	<u>BALANCE</u>	<u>PERCENT</u>
1000 LOCAL TAXES	999,999	65,320.26	65,320.26		934,678.74	6.53
2000 LOCAL SUPPORT NONTAX	88,196	1,682.95	1,682.95		86,513.05	1.91
3000 STATE, GENERAL PURPOSE	6,829,424	589,480.15	589,480.15		6,239,943.85	8.63
4000 STATE, SPECIAL PURPOSE	1,992,907	137,800.70	137,800.70		1,855,106.30	6.91
5000 FEDERAL, GENERAL PURPOSE	17,000	.00	.00		17,000.00	0.00
6000 FEDERAL, SPECIAL PURPOSE	2,755,606	.00	.00		2,755,606.00	0.00
7000 REVENUES FR OTH SCH DIST	29,500	.00	.00		29,500.00	0.00
8000 OTHER AGENCIES AND ASSOCIATES	0	.00	.00		.00	0.00
9000 OTHER FINANCING SOURCES	0	.00	.00		.00	0.00
<u>Total REVENUES/OTHER FIN. SOURCES</u>	12,712,632	794,284.06	794,284.06		11,918,347.94	6.25
<u>B. EXPENDITURES</u>						
00 Regular Instruction	6,254,000	529,654.77	529,654.77	4,349,543.76	1,374,801.47	78.02
10 Federal Stimulus	1,388,400	74,143.68	74,143.68	580,450.73	733,805.59	47.15
20 Special Ed Instruction	1,350,796	108,291.39	108,291.39	1,172,635.51	69,869.10	94.83
30 Voc. Ed Instruction	581,517	47,876.52	47,876.52	432,351.23	101,289.25	82.58
40 Skills Center Instruction	0	.00	.00	0.00	.00	0.00
50+60 Compensatory Ed Instruct.	1,110,601	83,183.15	83,183.15	744,757.47	282,660.38	74.55
70 Other Instructional Pgms	31,794	1,483.67	1,483.67	19,540.62	10,769.71	66.13
80 Community Services	17,000	.00	.00	0.00	17,000.00	0.00
90 Support Services	2,622,978	304,115.41	304,115.41	1,983,469.36	335,393.23	87.21
<u>Total EXPENDITURES</u>	13,357,086	1,148,748.59	1,148,748.59	9,282,748.68	2,925,588.73	78.10
<u>C. OTHER FIN. USES TRANS. OUT (GL 536)</u>	0	.00	.00			
<u>D. OTHER FINANCING USES (GL 535)</u>	0	.00	.00			
<u>E. EXCESS OF REVENUES/OTHER FIN. SOURCES OVER (UNDER) EXP/OTH FIN USES (A-B-C-D)</u>	644,454-	354,464.53-	354,464.53-		289,989.47	45.00-
<u>F. TOTAL BEGINNING FUND BALANCE</u>	1,400,000		1,804,642.37			
<u>G. G/L 898 PRIOR YEAR ADJUSTMENTS (+OR-)</u>	XXXXXXXXX		.00			
<u>H. TOTAL ENDING FUND BALANCE (E+F + OR - G)</u>	755,546		1,450,177.84			

I. ENDING FUND BALANCE ACCOUNTS:

G/L 810 Restricted For Other Items	0	.00
G/L 815 Restrict Unequalized Deduct Rev	0	.00
G/L 821 Restrictd for Carryover	22,000	.00
G/L 825 Restricted for Skills Center	0	.00
G/L 828 Restricted for C/O of FS Rev	0	.00
G/L 830 Restricted for Debt Service	0	.00
G/L 835 Restrictd For Arbitrage Rebate	0	.00
G/L 840 Nonspnd FB - Invent/Prepd Itms	0	.00
G/L 845 Restricted for Self-Insurance	0	.00
G/L 850 Restricted for Uninsured Risks	0	.00
G/L 870 Committed to Other Purposes	0	.00
G/L 872 Committd to Econmc Stabilizatn	0	.00
G/L 875 Assigned Contingencies	0	.00
G/L 884 Assigned to Other Cap Projects	0	.00
G/L 888 Assigned to Other Purposes	0	.00
G/L 890 Unassigned Fund Balance	733,546	1,450,177.84
G/L 891 Unassigned Min Fnd Bal Policy	0	.00
<u>TOTAL</u>	755,546	1,450,177.84



20--Capital Projects-- FUND BALANCE -- AGENCY ACCOUNTS -- Revised -- BUDGET-STATUS-REPORT  
Fiscal Year 2021 (September 1, 2021 - August 31, 2022)

For the CHEWELAH SCHOOL DISTRICT School District for the Month of September, 2021

	ANNUAL BUDGET	ACTUAL FOR MONTH	ACTUAL FOR YEAR	ENCUMBRANCES	BALANCE	PERCENT
<u>A. REVENUES/OTHER FIN. SOURCES</u>						
1000 Local Taxes	130,290	25,009.97	25,009.97		105,280.03	19.20
2000 Local Support Nontax	500	25.91	25.91		474.09	5.18
3000 State, General Purpose	0	.00	.00		.00	0.00
4000 State, Special Purpose	3,533,000	.00	.00		3,533,000.00	0.00
5000 Federal, General Purpose	5,500	.00	.00		5,500.00	0.00
6000 Federal, Special Purpose	30,000	.00	.00		30,000.00	0.00
7000 Revenues Fr Oth Sch Dist	0	.00	.00		.00	0.00
8000 Other Agencies and Associates	0	.00	.00		.00	0.00
9000 Other Financing Sources	0	.00	.00		.00	0.00
<u>Total REVENUES/OTHER FIN. SOURCES</u>	3,699,290	25,035.88	25,035.88		3,674,254.12	0.68
<u>B. EXPENDITURES</u>						
10 Sites	0	.00	.00	0.00	.00	0.00
20 Buildings	0	.00	.00	0.00	.00	0.00
30 Equipment	3,894,290	.00	.00	184,533.46	3,709,756.54	4.74
40 Energy	0	.00	.00	0.00	.00	0.00
50 Sales & Lease Expenditure	0	.00	.00	4,032.00	4,032.00-	0.00
60 Bond Issuance Expenditure	0	.00	.00	0.00	.00	0.00
90 Debt	0	.00	.00	0.00	.00	0.00
<u>Total EXPENDITURES</u>	3,894,290	.00	.00	188,565.46	3,705,724.54	4.84
<u>C. OTHER FIN. USES TRANS. OUT (GL 536)</u>	0	.00	.00			
<u>D. OTHER FINANCING USES (GL 535)</u>	0	.00	.00			
<u>E. EXCESS OF REVENUES/OTHER FIN.SOURCES OVER (UNDER) EXP/OTH FIN USES (A-B-C-D)</u>	195,000-	25,035.88	25,035.88		220,035.88	112.84-
<u>F. TOTAL BEGINNING FUND BALANCE</u>	205,000		341,467.53			
<u>G. G/L 898 PRIOR YEAR ADJUSTMENTS (+OR-)</u>	XXXXXXXX		.00			
<u>H. TOTAL ENDING FUND BALANCE (E+F + OR - G)</u>	10,000		366,503.41			

I. ENDING FUND BALANCE ACCOUNTS:

G/L 810 Restricted For Other Items	0	.00
G/L 825 Restricted for Skills Center	0	.00
G/L 830 Restricted for Debt Service	0	.00
G/L 835 Restricted For Arbitrage Rebate	0	.00
G/L 840 Nonspnd FB - Invent/Prepd Itms	0	.00
G/L 850 Restricted for Uninsured Risks	0	.00
G/L 861 Restricted from Bond Proceeds	0	.00
G/L 862 Committed from Levy Proceeds	4,500	351,304.10
G/L 863 Restricted from State Proceeds	0	.00
G/L 864 Restricted from Fed Proceeds	0	.00
G/L 865 Restricted from Other Proceeds	0	.00
G/L 866 Restricted from Impact Proceeds	0	.00
G/L 867 Restricted from Mitigation Fees	0	.00
G/L 869 Restricted fr Undistr Proceeds	0	.00
G/L 870 Committed to Other Purposes	0	.00
G/L 889 Assigned to Fund Purposes	5,500	15,199.31
G/L 890 Unassigned Fund Balance	0	.00
<u>TOTAL</u>	10,000	366,503.41

30--Debt Service Fund-- FUND BALANCE -- AGENCY ACCOUNTS -- Revised -- BUDGET-STATUS-REPORT  
Fiscal Year 2021 (September 1, 2021 - August 31, 2022)

For the CHEWELAH SCHOOL DISTRICT School District for the Month of September, 2021

<u>A. REVENUES/OTHER FIN. SOURCES</u>	<u>ANNUAL BUDGET</u>	<u>ACTUAL FOR MONTH</u>	<u>ACTUAL FOR YEAR</u>	<u>ENCUMBRANCES</u>	<u>BALANCE</u>	<u>PERCENT</u>
1000 Local Taxes	0	.00	.00		.00	0.00
2000 Local Support Nontax	250	1.55	1.55		248.45	0.62
3000 State, General Purpose	0	.00	.00		.00	0.00
5000 Federal, General Purpose	0	.00	.00		.00	0.00
9000 Other Financing Sources	0	.00	.00		.00	0.00
<u>Total REVENUES/OTHER FIN. SOURCES</u>	250	1.55	1.55		248.45	0.62
<u>B. EXPENDITURES</u>						
Matured Bond Expenditures	0	.00	.00	0.00	.00	0.00
Interest On Bonds	0	.00	.00	0.00	.00	0.00
Interfund Loan Interest	0	.00	.00	0.00	.00	0.00
Bond Transfer Fees	0	.00	.00	0.00	.00	0.00
Arbitrage Rebate	0	.00	.00	0.00	.00	0.00
Underwriter's Fees	0	.00	.00	0.00	.00	0.00
<u>Total EXPENDITURES</u>	0	.00	.00	0.00	.00	0.00
<u>C. OTHER FIN. USES TRANS. OUT (GL 536)</u>	0	.00	.00			
<u>D. OTHER FINANCING USES (GL 535)</u>	0	.00	.00			
<u>E. EXCESS OF REVENUES/OTHER FIN.SOURCES OVER (UNDER) EXPENDITURES (A-B-C-D)</u>	250	1.55	1.55		248.45-	99.38-
<u>F. TOTAL BEGINNING FUND BALANCE</u>	23,000		22,799.50			
<u>G. G/L 898 PRIOR YEAR ADJUSTMENTS (+OR-)</u>	XXXXXXXX		.00			
<u>H. TOTAL ENDING FUND BALANCE (E+F + OR - G)</u>	23,250		22,801.05			
<u>I. ENDING FUND BALANCE ACCOUNTS:</u>						
G/L 810 Restricted for Other Items	0		.00			
G/L 830 Restricted for Debt Service	23,250		22,801.05			
G/L 835 Restrictd For Arbitrage Rebate	0		.00			
G/L 870 Committed to Other Purposes	0		.00			
G/L 889 Assigned to Fund Purposes	0		.00			
G/L 890 Unassigned Fund Balance	0		.00			
<u>TOTAL</u>	23,250		22,801.05			

40--Associated Student Body Fund-- FUND BALANCE -- AGENCY ACCOUNTS -- Revised -- BUDGET-STATUS-REPORT  
Fiscal Year 2021 (September 1, 2021 - August 31, 2022)

For the CHEWELAH SCHOOL DISTRICT School District for the Month of September, 2021

	ANNUAL BUDGET	ACTUAL FOR MONTH	ACTUAL FOR YEAR	ENCUMBRANCES	BALANCE	PERCENT
<b>A. REVENUES</b>						
1000 General Student Body	60,200	1,037.90	1,037.90		59,162.10	1.72
2000 Athletics	133,000	13,393.00	13,393.00		119,607.00	10.07
3000 Classes	11,500	.00	.00		11,500.00	0.00
4000 Clubs	35,150	710.00	710.00		34,440.00	2.02
6000 Private Moneys	12,000	372.00	372.00		11,628.00	3.10
<b>Total REVENUES</b>	<b>251,850</b>	<b>15,512.90</b>	<b>15,512.90</b>		<b>236,337.10</b>	<b>6.16</b>
<b>B. EXPENDITURES</b>						
1000 General Student Body	53,500	90.00	90.00	1,637.50	51,772.50	3.23
2000 Athletics	113,000	5,088.18	5,088.18	9,326.80	98,585.02	12.76
3000 Classes	11,500	.00	.00	0.00	11,500.00	0.00
4000 Clubs	36,350	186.70	186.70	6,586.18	29,577.12	18.63
6000 Private Moneys	14,000	.00	.00	56.25	13,943.75	0.40
<b>Total EXPENDITURES</b>	<b>228,350</b>	<b>5,364.88</b>	<b>5,364.88</b>	<b>17,606.73</b>	<b>205,378.39</b>	<b>10.06</b>
<b>C. EXCESS OF REVENUES OVER (UNDER) EXPENDITURES (A-B)</b>						
	23,500	10,148.02	10,148.02		13,351.98-	56.82-
<b>D. TOTAL BEGINNING FUND BALANCE</b>						
	80,000		78,855.84			
<b>E. G/L 898 PRIOR YEAR ADJUSTMENTS (+OR-)</b>						
	XXXXXXXXXX		.00			
<b>F. TOTAL ENDING FUND BALANCE (C+D + OR - E)</b>						
	103,500		89,003.86			
<b>G. ENDING FUND BALANCE ACCOUNTS:</b>						
G/L 810 Restricted for Other Items	0		.00			
G/L 819 Restricted for Fund Purposes	103,500		89,003.86			
G/L 840 Nonspnd FB - Invent/Prepd Itms	0		.00			
G/L 850 Restricted for Uninsured Risks	0		.00			
G/L 870 Committed to Other Purposes	0		.00			
G/L 889 Assigned to Fund Purposes	0		.00			
G/L 890 Unassigned Fund Balance	0		.00			
<b>TOTAL</b>	<b>103,500</b>		<b>89,003.86</b>			

90--Transportation Vehicle Fund-- FUND BALANCE -- AGENCY ACCOUNTS -- Revised -- BUDGET-STATUS-REPORT  
Fiscal Year 2021 (September 1, 2021 - August 31, 2022)

For the CHEWELAH SCHOOL DISTRICT School District for the Month of September, 2021

	ANNUAL BUDGET	ACTUAL FOR MONTH	ACTUAL FOR YEAR	ENCUMBRANCES	BALANCE	PERCENT
<u>A. REVENUES/OTHER FIN. SOURCES</u>						
1000 Local Taxes	0	.00	.00		.00	0.00
2000 Local Nontax	1,500	11.64	11.64		1,488.36	0.78
3000 State, General Purpose	0	.00	.00		.00	0.00
4000 State, Special Purpose	125,000	.00	.00		125,000.00	0.00
5000 Federal, General Purpose	0	.00	.00		.00	0.00
6000 Federal, Special Purpose	0	.00	.00		.00	0.00
8000 Other Agencies and Associates	0	.00	.00		.00	0.00
9000 Other Financing Sources	2,000	.00	.00		2,000.00	0.00
A. <u>TOTAL REV/OTHER FIN.SRCS(LESS TRANS)</u>	128,500	11.64	11.64		128,488.36	0.01
B. <u>9900 TRANSFERS IN FROM GF</u>	0	.00	.00		.00	0.00
C. <u>Total REV./OTHER FIN. SOURCES</u>	128,500	11.64	11.64		128,488.36	0.01
<u>D. EXPENDITURES</u>						
Type 30 Equipment	298,500	.00	.00	117,961.88	180,538.12	39.52
Type 60 Bond Levy Issuance	0	.00	.00	0.00	.00	0.00
Type 90 Debt	0	.00	.00	0.00	.00	0.00
<u>Total EXPENDITURES</u>	298,500	.00	.00	117,961.88	180,538.12	39.52
E. <u>OTHER FIN. USES TRANS. OUT (GL 536)</u>	0	.00	.00			
F. <u>OTHER FINANCING USES (GL 535)</u>	0	.00	.00			
G. <u>EXCESS OF REVENUES/OTHER FIN SOURCES</u> <u>OVER(UNDER) EXP/OTH FIN USES (C-D-E-F)</u>	170,000-	11.64	11.64		170,011.64	100.01-
H. <u>TOTAL BEGINNING FUND BALANCE</u>	170,000		171,421.01			
I. <u>G/L 898 PRIOR YEAR ADJUSTMENTS(+OR-)</u>	XXXXXXXXXX		.00			
J. <u>TOTAL ENDING FUND BALANCE</u> <u>(G+H + OR - I)</u>	0		171,432.65			
<u>K. ENDING FUND BALANCE ACCOUNTS:</u>						
G/L 810 Restricted For Other Items	0		.00			
G/L 819 Restricted for Fund Purposes	0		171,432.65			
G/L 830 Restricted for Debt Service	0		.00			
G/L 835 Restrictd For Arbitrage Rebate	0		.00			
G/L 850 Restricted for Uninsured Risks	0		.00			
G/L 889 Assigned to Fund Purposes	0		.00			
G/L 890 Unassigned Fund Balance	0		.00			
<u>TOTAL</u>	0		171,432.65			

The following vouchers, as audited and certified by the Auditing Officer as required by RCW 42.24.080, and those expense reimbursement claims certified as required by RCW 42.24.090, are approved for payment. Those payments have been recorded on this listing which has been made available to the board.

As of October 20, 2021, the board, by a \_\_\_\_\_ vote, approves payments, totaling \$81,868.57. The payments are further identified in this document.

Total by Payment Type for Cash Account, County Treasurer Warrants:  
Warrant Numbers 120354 through 120404, totaling \$81,868.57

Secretary \_\_\_\_\_ Board Member \_\_\_\_\_  
Board Member \_\_\_\_\_ Board Member \_\_\_\_\_  
Board Member \_\_\_\_\_ Board Member \_\_\_\_\_

Check Nbr	Vendor Name	Check Date	Invoice Number	Invoice Desc	PO Number	Invoice Amount	Check Amount
120354	A-L COMPRESSED GASES INC	10/13/2021	2096386	OPEN PO FOR SUPPLIES	1000010258	296.47	365.33
10 E 530 3100 27 5610 4300 2400 0000 0			General Fund/EXPENDITURES/VOCATIONAL			296.47	
			334907	OPEN PO FOR SUPPLIES	1000010258	68.86	
10 E 530 3100 27 5610 4300 2400 0000 0			General Fund/EXPENDITURES/VOCATIONAL			68.86	
120355	ACE SEAL & STRIPE LLC	10/13/2021	1683	JHS Parking lot stripping	2300006356	853.91	1,343.49
10 E 530 9700 64 5610 4300 0000 0000 0			General Fund/EXPENDITURES/GENERAL SUPPORTIVE SERV			853.91	
			1684	Gess Parking lot stripping	2300006356	489.58	
10 E 530 9700 64 5610 1100 0000 0000 0			General Fund/EXPENDITURES/GENERAL SUPPORTIVE SERV			489.58	
120356	AT&T MOBILITY	10/13/2021	287301239699x0928202	BACKUP INTERNET CONNECTION FOR PHONE SYSTEM	1000010210	50.09	50.09
10 E 530 9700 65 7530 0000 0000 0000 0			General Fund/EXPENDITURES/GENERAL SUPPORTIVE SERV			50.09	
120357	BOOKSHARK LLC	10/13/2021	31161225	33-5640 Science 1 Megan Watts Lan. Arts Instructor 73.24 Ryder China Kit 27.99 Ryder Time line Fig. F 8.00 History Inst. F 115.98 Level F all subject Dmitry 843.00 Health and Human 10-13	1400007606	159.66	3,516.65

Check Nbr	Vendor Name	Check Date	Invoice Number	Invoice Desc	PO Number	Invoice Amount	Check Amount
				Dmitry 137.55			
				Science F 189.84			
				Ryder Science A			
				207.17 Pardini			
				Science			
				consumables 15.99			
				Pardini Science			
				Experiment pack			
				12.99 Pardini			
				Science stickers			
				3.99 Pardini			
				Discover and do			
				Supplies kit			
				74.99 Boles			
				Science D Inst.			
				54.99 Boles			
				Wordly Wise 14.35			
				Wordly wise 3000			
				Book 3 21.25			
				Level A All			
				subject 772.99			
				Jackson Hughes			
				Time line figures			
				1 8.00 What makes			
				you ill 4.99			
				Science B Inst.			
				51.99 Ava Science			
				B Experiment book			
				Ava 24.99			
				Discover and do B			
				kit 74.99 Ava			
				Hands on word			
				History 1 59.99			
				Ava Level C All			
				subject 821.00			
				Adaline Level C			
				Reading with			
				History Jameson			
				581.99			
10 E 530 0200 33 5640 5400 0000 0000 0				General Fund/EXPENDITURES/ALTERNATIVE BASIC ED		159.66	
			31164170	Spelling you see	1400007639		747.76
				B (10) Artistic			
				Pursuit middle			
				school and art			
				supplies Math			
				Gamma			
10 E 530 0200 33 5640 5400 0000 0000 0				General Fund/EXPENDITURES/ALTERNATIVE BASIC ED		747.76	
			31164236	33-5640 Science 1	1400007606		24.99

Check Nbr	Vendor Name	Check Date	Invoice Number	Invoice Desc	PO Number	Invoice Amount	Check Amount
				Megan Watts Lan. Arts Instructor 73.24 Ryder China Kit 27.99 Ryder Time line Fig. F 8.00 History Inst. F 115.98 Level F all subject Dmitry 843.00 Health and Human 10-13 Dmitry 137.55 Science F 189.84 Ryder Science A 207.17 Pardini Science consumables 15.99 Pardini Science Experiment pack 12.99 Pardini Science stickers 3.99 Pardini Discover and do Supplies kit 74.99 Boles Science D Inst. 54.99 Boles Wordly Wise 14.35 Wordly wise 3000 Book 3 21.25 Level A All subject 772.99 Jackson Hughes Time line figures 1 8.00 What makes you ill 4.99 Science B Inst. 51.99 Ava Science B Experiment book Ava 24.99 Discover and do B kit 74.99 Ava Hands on word History 1 59.99 Ava Level C All subject 821.00 Adaline Level C Reading with History Jameson 581.99			



Check Nbr	Vendor Name	Check Date	Invoice Number	Invoice Desc	PO Number	Invoice Amount	Check Amount
10 E 530 0200 33 5640 5400 0000 0000 0				General Fund/EXPENDITURES/ALTERNATIVE BASIC ED		24.99	
			31164268	Pardini Riding on a caravan Cool Beans Children just like me level readers 1	1400007641	61.28	
10 E 530 0200 33 5640 5400 0000 0000 0				General Fund/EXPENDITURES/ALTERNATIVE BASIC ED		61.28	
			31166207	BookShark - - History, Science, Spelling you See curriculum - Wallner's, Mora families	1400007651	810.11	
10 E 530 0200 33 5640 5400 0000 0000 0				General Fund/EXPENDITURES/ALTERNATIVE BASIC ED		810.11	
			31167946	Science H for Molly Siegal	1400007656	252.43	
10 E 530 0200 33 5640 5400 0000 0000 0				General Fund/EXPENDITURES/ALTERNATIVE BASIC ED		252.43	
			31167999	MCP Phonics Level C 14.50 Handwriting without tears 3 package 25.00 BS Lang. Arts K Pack. 62.00 Piano Prodigy 99.99 MIDI Keyboard 149.99 Fun tales readers 23.99 Lined paper (2) 7.30 Lined paper (2) 7.30	1400007655	435.42	
10 E 530 0200 33 5640 5400 0000 0000 0				General Fund/EXPENDITURES/ALTERNATIVE BASIC ED		435.42	
			31168032	33-5640 Science 1 Megan Watts Lan. Arts Instructor 73.24 Ryder China Kit 27.99 Ryder Time line Fig. F 8.00 History Inst. F 115.98 Level F all subject Dmitry 843.00 Health and Human 10-13 Dmitry 137.55	1400007606	51.99	

Check Nbr	Vendor Name	Check Date	Invoice Number	Invoice Desc	PO Number	Invoice Amount	Check Amount
				Science F 189.84			
				Ryder Science A			
				207.17 Pardini			
				Science			
				consumables 15.99			
				Pardini Science			
				Experiment pack			
				12.99 Pardini			
				Science stickers			
				3.99 Pardini			
				Discover and do			
				Supplies kit			
				74.99 Boles			
				Science D Inst.			
				54.99 Boles			
				Wordly Wise 14.35			
				Wordly wise 3000			
				Book 3 21.25			
				Level A All			
				subject 772.99			
				Jackson Hughes			
				Time line figures			
				1 8.00 What makes			
				you ill 4.99			
				Science B Inst.			
				51.99 Ava Science			
				B Experiment book			
				Ava 24.99			
				Discover and do B			
				kit 74.99 Ava			
				Hands on word			
				History 1 59.99			
				Ava Level C All			
				subject 821.00			
				Adaline Level C			
				Reading with			
				History Jameson			
				581.99			
10 E 530 0200 33 5640 5400 0000 0000 0				General Fund/EXPENDITURES/ALTERNATIVE BASIC ED		51.99	
			31170849	BookShark -	1400007663	805.92	
				Saxon Math Level			
				3 -\$173.00 (4)			
				Johnny, Jesse and			
				Kiele Grubb -			
				Gamma Math DVD -			
				\$57.00 Mora			
10 E 530 0200 33 5640 5400 0000 0000 0				General Fund/EXPENDITURES/ALTERNATIVE BASIC ED		805.92	
			31171802	BookShark - -	1400007651	86.98	

Check Nbr	Vendor Name	Check Date	Invoice Number	Invoice Desc	PO Number	Invoice Amount	Check Amount
10 E 530 0200 33 5640 5400 0000 0000 0			General Fund/EXPENDITURES/ALTERNATIVE BASIC ED	History, Science, Spelling you See curriculum - Wallner's, Mora families		86.98	
			31171810	33-5640 Science 1 Megan Watts Lan. Arts Instructor 73.24 Ryder China Kit 27.99 Ryder Time line Fig. F 8.00 History Inst. F 115.98 Level F all subject Dmitry 843.00 Health and Human 10-13 Dmitry 137.55 Science F 189.84 Ryder Science A 207.17 Pardini Science consumables 15.99 Pardini Science Experiment pack 12.99 Pardini Science stickers 3.99 Pardini Discover and do Supplies kit 74.99 Boles Science D Inst. 54.99 Boles Wordly Wise 14.35 Wordly wise 3000 Book 3 21.25 Level A All subject 772.99 Jackson Hughes Time line figures 1 8.00 What makes you ill 4.99 Science B Inst. 51.99 Ava Science B Experiment book Ava 24.99 Discover and do B kit 74.99 Ava	1400007606	80.11	

Check Nbr	Vendor Name	Check Date	Invoice Number	Invoice Desc	PO Number	Invoice Amount	Check Amount
				Hands on word History 1 59.99 Ava Level C All subject 821.00 Adaline Level C Reading with History Jameson 581.99			
10 E 530 0200 33 5640 5400 0000 0000 0				General Fund/EXPENDITURES/ALTERNATIVE BASIC ED		80.11	
120358	BYU INDEPENDENT STUDY	10/13/2021	DCE-00009542	BYU Classes	1400007677	225.00	225.00
10 E 530 0200 27 5650 5400 0000 0000 0				General Fund/EXPENDITURES/ALTERNATIVE BASIC ED		225.00	
120359	CITY OF CHEWELAH	10/13/2021	092921	UTILITIES	1000010218	11,232.01	11,232.01
10 E 530 9700 65 7410 0000 0000 0000 0				General Fund/EXPENDITURES/GENERAL SUPPORTIVE SERV		712.42	
10 E 530 9700 65 7420 0000 0000 0000 0				General Fund/EXPENDITURES/GENERAL SUPPORTIVE SERV		205.15	
10 E 530 9700 65 7622 0000 0000 0000 0				General Fund/EXPENDITURES/GENERAL SUPPORTIVE SERV		641.90	
10 E 530 9700 65 7410 1100 0000 0000 0				General Fund/EXPENDITURES/GENERAL SUPPORTIVE SERV		747.49	
10 E 530 9700 65 7420 1100 0000 0000 0				General Fund/EXPENDITURES/GENERAL SUPPORTIVE SERV		957.18	
10 E 530 9700 65 7622 1100 0000 0000 0				General Fund/EXPENDITURES/GENERAL SUPPORTIVE SERV		2,257.11	
10 E 530 9700 65 7410 2200 0000 0000 0				General Fund/EXPENDITURES/GENERAL SUPPORTIVE SERV		178.02	
10 E 530 9700 65 7622 2200 0000 0000 0				General Fund/EXPENDITURES/GENERAL SUPPORTIVE SERV		478.07	
10 E 530 9700 65 7410 4300 0000 0000 0				General Fund/EXPENDITURES/GENERAL SUPPORTIVE SERV		939.83	
10 E 530 9700 65 7420 4300 0000 0000 0				General Fund/EXPENDITURES/GENERAL SUPPORTIVE SERV		837.57	
10 E 530 9700 65 7622 4300 0000 0000 0				General Fund/EXPENDITURES/GENERAL SUPPORTIVE SERV		2,799.03	
10 E 530 9700 65 7410 5400 0000 0000 0				General Fund/EXPENDITURES/GENERAL SUPPORTIVE SERV		108.95	
10 E 530 9700 65 7420 5400 0000 0000 0				General Fund/EXPENDITURES/GENERAL SUPPORTIVE SERV		181.95	
10 E 530 9700 65 7622 5400 0000 0000 0				General Fund/EXPENDITURES/GENERAL SUPPORTIVE SERV		187.34	
120360	CRYSTAL SPRINGS	10/13/2021	15901662 100921	WATER AND COOLER RENTAL	1400007650	161.69	219.10
10 E 530 0200 23 5610 5400 0000 0000 0				General Fund/EXPENDITURES/ALTERNATIVE BASIC ED		161.69	
			15902043 100921	WATER AND COOLER RENTAL	1000010220	57.41	
10 E 530 9700 13 5610 0000 0000 0000 0				General Fund/EXPENDITURES/GENERAL SUPPORTIVE SERV		57.41	
120361	DEERE CREDIT INC	10/13/2021	2554776	LEASE 1600 COMMERCIAL WIDE AREA LAWN MOWER	1000010221	647.17	647.17
10 E 530 9700 84 7831 0000 0000 0000 0				General Fund/EXPENDITURES/GENERAL SUPPORTIVE SERV		647.17	
120362	DIRECT MAIL ENT INC	10/13/2021	042027	CAPITAL LEVY INFORMATIONAL MAILING	1000010294	605.34	1,208.28
10 E 530 9700 11 7340 0000 0000 0000 0				General Fund/EXPENDITURES/GENERAL SUPPORTIVE SERV		605.34	
			042027B	MAILING FOR COMMUNITY NEWSLETTER	1000010295	602.94	

Check Nbr	Vendor Name	Check Date	Invoice Number	Invoice Desc	PO Number	Invoice Amount	Check Amount
				QUARTERLY			
10 E 530 9700 12 7340 0000 0000 0000 0				General Fund/EXPENDITURES/GENERAL SUPPORTIVE SERV		602.94	
120363	DISCOVERY EDUCATION	10/13/2021	CINV-026199	Discovery education - service and license	1100007646	3,415.87	3,415.87
10 E 530 0100 33 5650 1100 0000 0000 0				General Fund/EXPENDITURES/BASIC EDUCATION		3,415.87	
120364	ELAN CARDMEMBER SERVICE	10/13/2021	ED-083121	Teaching text Books GR. 6	1400007648	55.08	5,114.30
10 L 630 0000 00 0000 0000 0000 0000				General Fund/DUE TO OTHER GOVERNMENT UNITS		-4.19	
10 E 530 0200 33 5650 5400 0000 0000 0				General Fund/EXPENDITURES/ALTERNATIVE BASIC ED		59.27	
			ED-090321	Core Knowledge - Curriculum for Angie Johnson - The American Revolution Homeschool set \$50.85 - World Rivers Homeschool set \$20.95 - Human Cells and Digestion Student Book \$7.95 - Ancient Rome Homeschool Set \$48.85 The Age of Exploration Homeschool set \$47.85 - total - 196.35 - ELAN CARD	1400007658	196.35	
10 L 630 0000 00 0000 0000 0000 0000				General Fund/DUE TO OTHER GOVERNMENT UNITS		-14.92	
10 E 530 0200 33 5640 5400 0000 0000 0				General Fund/EXPENDITURES/ALTERNATIVE BASIC ED		211.27	
			ED-090821	Essentials in Writing 9 and Essentials in Literature 9 with DVD's - \$178.00 - Kennah Lopes - USE THE ELAN CARD	1400007662	178.00	
10 L 630 0000 00 0000 0000 0000 0000				General Fund/DUE TO OTHER GOVERNMENT UNITS		-13.53	
10 E 530 0200 33 5640 5400 0000 0000 0				General Fund/EXPENDITURES/ALTERNATIVE BASIC ED		191.53	
			ED-092021	VitalChek Certified Birth Certificate	1400007668	61.50	

Check Nbr	Vendor Name	Check Date	Invoice Number	Invoice Desc	PO Number	Invoice Amount	Check Amount
10 E 530 0300 27 7340 6000 0000 0000 0			General Fund/EXPENDITURES/OPEN DOORS			61.50	
			ED-092121	Purchased Items 1	1400007672	189.00	
				Essentials in Writing 10, Essentials in Literature 10, and DVDs 189.00 ENG10 Subtotal 189.00 Tax Rate 0.00% Tax 0.00 Shipping/Handling 0.00 Total \$189.00 Kennah Lopes			
10 L 630 0000 00 0000 0000 0000 0000			General Fund/DUE TO OTHER GOVERNMENT UNITS			-14.36	
10 E 530 0200 33 5640 5400 0000 0000 0			General Fund/EXPENDITURES/ALTERNATIVE BASIC ED			203.36	
			JP-091121	SMORE.COM subscription	1100007706	79.00	
10 E 530 0100 23 7810 1100 0000 0000 0			General Fund/EXPENDITURES/BASIC EDUCATION			79.00	
			JT-091621	Gess Drainage pipe fittings	2300006353	180.07	
10 E 530 9700 64 5610 1100 0000 0000 0			General Fund/EXPENDITURES/GENERAL SUPPORTIVE SERV			180.07	
			MS-090421	FRANKLIN PLANNER-REANNA, KATY AND MARA ANNUAL PLANNERS	1000010262	159.03	
10 E 530 9700 13 5610 0000 0000 0000 0			General Fund/EXPENDITURES/GENERAL SUPPORTIVE SERV			159.03	
			MS-090921	FRANKLIN PLANNER-PLANNERS FOR REANNA AND KATY FOR JUL 2021-JUN 2022 REFUND	1000010189	-172.20	
10 E 530 9700 13 5610 0000 0000 0000 0			General Fund/EXPENDITURES/GENERAL SUPPORTIVE SERV			-172.20	
			MS-091421	Education Week Annual Subscription for Jason Perrins	1000010272	79.00	
10 E 530 9700 12 7810 0000 0000 0000 0			General Fund/EXPENDITURES/GENERAL SUPPORTIVE SERV			79.00	
			SA-083121	GENERATION GENIUS	1300007556	120.00	

Check Nbr	Vendor Name	Check Date	Invoice Number	Invoice Desc	PO Number	Invoice Amount	Check Amount
10 L 630 0000 00 0000 0000 0000				General Fund/DUE TO OTHER GOVERNMENT UNITS		-9.12	
10 E 530 0100 27 5610 4300 4040 0000 0				General Fund/EXPENDITURES/BASIC EDUCATION		129.12	
			SA-090921	NEARPOD	1300007555	99.00	
10 L 630 0000 00 0000 0000 0000				General Fund/DUE TO OTHER GOVERNMENT UNITS		-7.52	
10 E 530 0100 27 7350 4300 4040 0000 0				General Fund/EXPENDITURES/BASIC EDUCATION		106.52	
			SA-091421	NEARPOD PLATINUM PRESCRIPTION	1300007531	349.00	
10 L 630 0000 00 0000 0000 0000				General Fund/DUE TO OTHER GOVERNMENT UNITS		-26.52	
10 E 530 0100 27 5610 4300 4040 0000 0				General Fund/EXPENDITURES/BASIC EDUCATION		375.52	
			SA-092121	CLASS CRAFT-SPED PROGRAM	2100006156	120.00	
10 L 630 0000 00 0000 0000 0000				General Fund/DUE TO OTHER GOVERNMENT UNITS		-9.12	
10 E 530 2100 27 5650 4300 0000 0000 0				General Fund/EXPENDITURES/SPED STATE		129.12	
			SA-092121B	CLASS CRAFT-SPED PROGRAM	2100006156	2.40	
10 E 530 2100 27 5650 4300 0000 0000 0				General Fund/EXPENDITURES/SPED STATE		2.40	
			SA-092721	American School of Counselor Association SUPPORT AND SUSTAIN PROFESSIONAL DEVELOPMENT	1300007538	99.00	
10 E 530 0100 31 7330 4300 0000 0000 0				General Fund/EXPENDITURES/BASIC EDUCATION		99.00	
			ZL-091921	Technology for new staff	2600001552	3,269.40	
10 E 530 0100 32 5650 0000 0000 0000 0				General Fund/EXPENDITURES/BASIC EDUCATION		3,269.40	
			ZL-092121	MICROSOFT LICENSE	1000010222	50.67	
10 L 630 0000 00 0000 0000 0000				General Fund/DUE TO OTHER GOVERNMENT UNITS		-3.85	
10 E 530 0100 32 7350 0000 0000 0000 0				General Fund/EXPENDITURES/BASIC EDUCATION		54.52	
120365	ESGI	10/13/2021	37509	subscription for kindergarten teachers	1100007690	639.00	639.00
10 L 630 0000 00 0000 0000 0000				General Fund/DUE TO OTHER GOVERNMENT UNITS		-48.56	
10 E 530 0100 27 5650 1100 0000 0000 0				General Fund/EXPENDITURES/BASIC EDUCATION		687.56	
120366	FFA DISTRICT V	10/13/2021	092021	Annual dues FFA District 5	1300007545	175.00	175.00
10 E 530 3100 27 7580 4300 0000 0000 0				General Fund/EXPENDITURES/VOCATIONAL		175.00	
120367	FIRE PROTECTION SPECIALISTS LL	10/13/2021	68624	ANNUAL BUILDING FIRE ALARM	1000010282	985.00	985.00

Check Nbr	Vendor Name	Check Date	Invoice Number	Invoice Desc	PO Number	Invoice Amount	Check Amount
				INSPECTION			
10 E 530 9700 64 7431 1100 0000 0000 0				General Fund/EXPENDITURES/GENERAL SUPPORTIVE SERV		492.50	
10 E 530 9700 64 7431 4300 0000 0000 0				General Fund/EXPENDITURES/GENERAL SUPPORTIVE SERV		492.50	
120368	H & H INC	10/13/2021	100421	COPIER MONTHLY USAGE CHARGES	1000010225	941.16	941.16
10 E 530 0100 23 7340 1100 0000 0000 0				General Fund/EXPENDITURES/BASIC EDUCATION		504.64	
10 E 530 0100 23 7340 4300 0000 0000 0				General Fund/EXPENDITURES/BASIC EDUCATION		202.89	
10 E 530 9700 13 7340 0000 0000 0000 0				General Fund/EXPENDITURES/GENERAL SUPPORTIVE SERV		159.88	
10 E 530 0200 23 7340 5400 0000 0000 0				General Fund/EXPENDITURES/ALTERNATIVE BASIC ED		73.75	
120369	INLAND NORTHWEST THERAPY	10/13/2021	901	SPEECH SERVICES 2021-2022 TO COVER FOR STAFF LEAVE	1000010227	5,700.00	9,956.25
10 E 530 2100 26 7322 0000 0000 0000 0				General Fund/EXPENDITURES/SPED STATE		5,700.00	
			901B	OT SERVICES 2021-2022	1000010228	4,256.25	
10 E 530 2100 26 7322 0000 0000 0000 0				General Fund/EXPENDITURES/SPED STATE		4,256.25	
120370	INTRADO INTERACTIVE SERVICES C	10/13/2021	224672	SCHOOL MESSENGER 12 MONTH NOTIFICATION SYSTEM RENEWAL FOR 2021-2022	1000010288	1,609.97	1,609.97
10 E 530 9700 13 5650 0000 0000 0000 0				General Fund/EXPENDITURES/GENERAL SUPPORTIVE SERV		1,609.97	
120371	INTRIGUE COMMUNICATIONS INC	10/13/2021	3988	PHONE SERVICES ON ACCOUNT #100152-3 MONTHS AUG-OCT	1000010226	698.04	698.04
10 E 530 9700 65 7530 0000 0000 0000 0				General Fund/EXPENDITURES/GENERAL SUPPORTIVE SERV		698.04	
120372	JMT PETROLEUM	10/13/2021	98977	FUEL ACCT	1000010229	6,868.28	6,868.28
10 E 530 9700 62 5626 0000 0000 0000 0				General Fund/EXPENDITURES/GENERAL SUPPORTIVE SERV		347.45	
10 E 530 9700 75 5626 0000 0000 0000 0				General Fund/EXPENDITURES/GENERAL SUPPORTIVE SERV		210.48	
10 E 530 9900 52 5626 0000 0000 0000 0				General Fund/EXPENDITURES/PUPIL TRANSPORTATION		6,310.35	
120373	LITHOGRAPH REPRODUCTIONS, INC	10/13/2021	10178	PRINTING FOR CAPITAL LEVY INFORMATION 500 FLYERS	1000010283	507.94	507.94
10 E 530 9700 11 7550 0000 0000 0000 0				General Fund/EXPENDITURES/GENERAL SUPPORTIVE SERV		507.94	
120374	MAINTENANCE SOLUTIONS INC	10/13/2021	092825106	custodial supplies	1100007692	690.79	690.79
10 E 530 9700 63 5610 1100 0000 0000 0				General Fund/EXPENDITURES/GENERAL SUPPORTIVE SERV		690.79	
120375	MCGRAW-HILL EDUCATION	10/13/2021	119834124001	McGraw Hill - My Math - Teacher	1400007670	478.72	494.47



Check Nbr	Vendor Name	Check Date	Invoice Number	Invoice Desc	PO Number	Invoice Amount	Check Amount
10 E 530 0200 33 5640 5400 0000 0000 0				Edition Volume 1 & 2 (2 each) \$100.59 - one student manual (1) \$14.64 - Grade 4			
			General Fund/EXPENDITURES/ALTERNATIVE BASIC ED			478.72	
			119845039001	McGraw Hill - My Math - Teacher Edition Volume 1 & 2 (2 each) \$100.59 - one student manual (1) \$14.64 - Grade 4	1400007670	15.75	
10 E 530 0200 33 5640 5400 0000 0000 0			General Fund/EXPENDITURES/ALTERNATIVE BASIC ED			15.75	
120376	MOBILE MODULAR MANAGEMENT CORP	10/13/2021	2193314	SHIP AND RENT MODULAR 8X12 FOR COVID SICK ROOMS-GESS & JJSHS	1000010278	1,215.88	1,215.88
10 E 530 1200 64 7441 0000 0000 0000 0			General Fund/EXPENDITURES/Fed Stim - School Improve			1,215.88	
120377	NAPA AUTO PARTS	10/13/2021	093021	TRANSPORTATION SUPPLIES ACCT #16420840	1000010231	55.94	55.94
10 E 530 9900 53 5610 0000 0000 0000 0			General Fund/EXPENDITURES/PIIPII, TRANSPORTATION			55.94	
120378	NEWESD 101	10/13/2021	1222102368	CRISIS FLIP CHARTS FOR BUILDINGS-10	1000010285	100.81	425.81
10 E 530 0100 23 5610 1100 0000 0000 0			General Fund/EXPENDITURES/BASIC EDUCATION			40.32	
10 E 530 0100 23 5610 4300 0000 0000 0			General Fund/EXPENDITURES/BASIC EDUCATION			40.32	
10 E 530 9700 12 5610 0000 0000 0000 0			General Fund/EXPENDITURES/GENERAL SUPPORTIVE SERV			10.08	
10 E 530 0200 23 5610 5400 0000 0000 0			General Fund/EXPENDITURES/ALTERNATIVE BASIC ED			10.09	
			1222102382	SAFE SCHOOLS ONLINE STAFF TRAINING ANNUAL SUBSCRIPTION 6-2021 TO 6-2022	1000010284	325.00	
10 E 530 9700 14 7330 0000 0000 0000 0			General Fund/EXPENDITURES/GENERAL SUPPORTIVE SERV			325.00	
120379	OFFICE DEPOT	10/13/2021	188345180002	CLASSROOM SUPPLIES	1300007520	17.61	470.05
10 E 530 0100 27 5610 4300 3400 0000 0			General Fund/EXPENDITURES/BASIC EDUCATION			17.61	
			188991838005	CLASSROOM	1300007516	4.10	

Check Nbr	Vendor Name	Check Date	Invoice Number	Invoice Desc	PO Number	Invoice Amount	Check Amount
10 E 530 0100 27 5610 4300 4000 0000 0				SUPPLIES General Fund/EXPENDITURES/BASIC EDUCATION		4.10	
			188991838006	CLASSROOM SUPPLIES	1300007516	26.23	
10 E 530 0100 27 5610 4300 4000 0000 0				General Fund/EXPENDITURES/BASIC EDUCATION		26.23	
			194631204001	SMEAD CLASSIFICATION FOLDERS 2 DIVIDERS LETTER SIZE RED	2100006160	102.20	
10 E 530 2100 27 5610 4300 0000 0000 0				General Fund/EXPENDITURES/SPED STATE		102.20	
			194631204001b	TONER HP 125A 583758	2100006161	145.41	
10 E 530 2100 27 5610 4300 0000 0000 0				General Fund/EXPENDITURES/SPED STATE		145.41	
			195831949001	FARRELL NAMEPLATE	1300007537	15.05	
10 E 530 0100 23 5610 4300 0000 0000 0				General Fund/EXPENDITURES/BASIC EDUCATION		15.05	
			200849036001	11 X 17 COPY PAPER	1300007542	51.64	
10 E 530 0100 22 5610 4300 0000 0000 0				General Fund/EXPENDITURES/BASIC EDUCATION		51.64	
			200849036001b	DRY ERASERS, PENCILS AND PENS	1300007541	58.28	
10 E 530 0100 27 5610 4300 3200 0000 0				General Fund/EXPENDITURES/BASIC EDUCATION		58.28	
			201975877001	Pencil Sharpener	1300007547	49.53	
10 E 530 3100 27 5610 4300 0000 0000 0				General Fund/EXPENDITURES/VOCATIONAL		49.53	
120380 OSPI CHILD NUTRITION SERVICES		10/13/2021	30352	FOOD COMMODITIES	1000010235	713.47	713.47
10 E 530 9800 42 5630 0000 0000 0000 0				General Fund/EXPENDITURES/FOOD SERVICES		713.47	
120381 OXARC INC		10/13/2021	61007480	Argon and Stargon gas	1000010236	13.18	13.18
10 E 530 3100 27 5610 4300 2400 0000 0				General Fund/EXPENDITURES/VOCATIONAL		13.18	
120382 PEARSON SAVVAS LEARNING COMPAN		10/13/2021	4026493228	1 9780133339543 MYPERSPECTIVES ENGLISH LANGUAGE ARTS 2017 STUDENT EDITION VOLUMES 1 & 2 GRADE 11 \$25.97 Net Available Indianapolis, IN	1400007667	181.08	181.08

Check Nbr	Vendor Name	Check Date	Invoice Number	Invoice Desc	PO Number	Invoice Amount	Check Amount
				6			
				\$155.82			
				Estimated Tax:			
				\$12.79			
				Estimated			
				Shipping and			
				Handling: \$12.47			
				Estimated Total:			
				\$181.08			
10 E 530 0300 33 5640 6000 0000 0000 0				General Fund/EXPENDITURES/OPEN DOORS		181.08	
120383	PITNEY BOWES GLOBAL FINANCIAL	10/13/2021	3314421239	MAILING MACHINE	1000010238	222.54	222.54
				LEASE #0040848019			
10 E 530 9700 13 7340 0000 0000 0000 0				General Fund/EXPENDITURES/GENERAL SUPPORTIVE SERV		222.54	
120384	QCL INC	10/13/2021	49693	TRANSPORTATION	1000010240	261.00	261.00
				SERVICES DRUG			
				TESTS			
10 E 530 9900 52 7340 0000 0000 0000 0				General Fund/EXPENDITURES/PUPIL TRANSPORTATION		261.00	
120385	QUILL CORPORATTON	10/13/2021	19607423	supplies	1100007679	54.29	183.84
10 E 530 0100 27 5610 1100 0000 0000 0				General Fund/EXPENDITURES/BASIC EDUCATION		54.29	
			19644028	supplies	1100007679	3.10	
10 E 530 0100 27 5610 1100 0000 0000 0				General Fund/EXPENDITURES/BASIC EDUCATION		3.10	
			19647798	supplies	1100007679	126.45	
10 E 530 0100 27 5610 1100 0000 0000 0				General Fund/EXPENDITURES/BASIC EDUCATION		126.45	
120386	REILLY, DENNIS	10/13/2021	082421	REIMBURSE FOR	0	60.53	60.53
				SUPPLIES FOR FAIR			
				PIG WATERERS			
10 E 530 3100 27 5610 4300 1100 0000 0				General Fund/EXPENDITURES/VOCATIONAL		60.53	
120387	RIDDELL ALL AMERICAN	10/13/2021	60439263	Enrichment levy	1300007468	5,038.53	5,038.53
				shoulder pads			
10 E 530 0100 28 5610 4300 0000 0000 1				General Fund/EXPENDITURES/BASIC EDUCATION		5,038.53	
120388	SAFEWAY ALBERTSON COMPANIES	10/13/2021	083121	COVID - water for	1100007707	55.71	548.71
				students-fountains			
				down for COVID			
10 E 530 1200 27 5610 1100 0000 0000 0				General Fund/EXPENDITURES/Fed Stim - School Improve		55.71	
			091321	custodial soap;	1100007689	85.98	
				covid water -			
				please code this			
				to appropriate			
				account, thanks			
10 E 530 9700 63 5610 1100 0000 0000 0				General Fund/EXPENDITURES/GENERAL SUPPORTIVE SERV		21.73	

Check Nbr	Vendor Name	Check Date	Invoice Number	Invoice Desc	PO Number	Invoice Amount	Check Amount
10 E 530 1200 27 5610 1100 0000 0000 0				General Fund/EXPENDITURES/Fed Stim - School Improve		64.25	
			092721	transitional k supplies	1100007700	97.73	
10 E 530 0100 27 5610 1100 0000 0000 0				General Fund/EXPENDITURES/BASIC EDUCATION		97.73	
			092821	safeway - water for students during COVID (water fountains turned off to reduce transmission)	1100007699	80.43	
10 E 530 1200 27 5610 1100 0000 0000 0				General Fund/EXPENDITURES/Fed Stim - School Improve		80.43	
			100521	FOOD SERVICE SUPPLIES ACCT #60821	1000010246	228.86	
10 E 530 9800 42 5630 0000 0000 0000 0				General Fund/EXPENDITURES/FOOD SERVICES		152.13	
10 E 530 9800 44 5610 0000 0000 0000 0				General Fund/EXPENDITURES/FOOD SERVICES		76.73	
120389 SETYS ACE HARDWARE		10/13/2021	093021	PURCHASES OPEN PO ACCT #101365	1000010247	807.60	807.60
10 E 530 2100 27 5610 4300 0000 0000 0				General Fund/EXPENDITURES/SPED STATE		39.44	
10 E 530 9700 62 5610 0000 0000 0000 0				General Fund/EXPENDITURES/GENERAL SUPPORTIVE SERV		76.19	
10 E 530 9700 63 5610 1100 0000 0000 0				General Fund/EXPENDITURES/GENERAL SUPPORTIVE SERV		112.14	
10 E 530 9700 63 5610 4300 0000 0000 0				General Fund/EXPENDITURES/GENERAL SUPPORTIVE SERV		95.62	
10 E 530 9700 64 5610 0000 0000 0000 0				General Fund/EXPENDITURES/GENERAL SUPPORTIVE SERV		442.28	
10 E 530 9800 44 5610 0000 0000 0000 0				General Fund/EXPENDITURES/FOOD SERVICES		20.87	
10 E 530 9900 53 5610 0000 0000 0000 0				General Fund/EXPENDITURES/PUPIL TRANSPORTATION		21.06	
120390 TERRYS DAIRY		10/13/2021	093021	DAIRY FOR CUST #1513	1000010249	1,694.26	1,694.26
10 E 530 9800 42 5630 0000 0000 0000 0				General Fund/EXPENDITURES/FOOD SERVICES		1,694.26	
120391 TILLA, KALLIE J		10/13/2021	100721	REIMBURSE FOR INTERVENTION MATERIALS	0	62.86	62.86
10 E 530 0100 27 5610 1100 0000 0000 0				General Fund/EXPENDITURES/BASIC EDUCATION		62.86	
120392 TOOLS FOR SCHOOLS		10/13/2021	1376888	FOOD & SUPPLIES	1000010248	-74.12	692.23
10 E 530 9800 42 5630 0000 0000 0000 0				General Fund/EXPENDITURES/FOOD SERVICES		-74.12	
			3110373	FOOD & SUPPLIES	1000010248	766.35	
10 E 530 9800 42 5630 0000 0000 0000 0				General Fund/EXPENDITURES/FOOD SERVICES		766.35	
120393 ULINE		10/13/2021	139105822	desk for the H-9014 SIT/STAND MOBILE DESK - 30 X 22"	1400007673	245.69	245.69

Check Nbr	Vendor Name	Check Date	Invoice Number	Invoice Desc	PO Number	Invoice Amount	Check Amount
10 E 530 0200 27 5610 5400 0000 0000 0				General Fund/EXPENDITURES/ALTERNATIVE BASIC ED		245.69	
120394	US FOODS	10/13/2021	100621	FOOD SERVICE SUPPLIES CUSTOMER #9018139	1000010250	4,607.92	4,607.92
10 E 530 9800 42 5630 0000 0000 0000 0				General Fund/EXPENDITURES/FOOD SERVICES		4,124.74	
10 E 530 9800 44 5610 0000 0000 0000 0				General Fund/EXPENDITURES/FOOD SERVICES		483.18	
120395	VERIZON WIRELESS	10/13/2021	9888770536	WIRELESS HOTSPOTS MONTHLY CHARGES FOR COVID CONNECTIVITY ACCT 342368558-00001	1000010252	115.01	115.01
10 E 530 1200 32 7530 0000 0000 0000 0				General Fund/EXPENDITURES/Fed Stim - School Improve		115.01	
120396	WALTER E NELSON CO	10/13/2021	452164	custodial supplies	1100007691	54.88	150.68
10 E 530 9700 63 5610 1100 0000 0000 0				General Fund/EXPENDITURES/GENERAL SUPPORTIVE SERV		54.88	
			452674	Quartzite learning Custodial supplies	2300006354	95.80	
10 E 530 9700 63 5610 5400 0000 0000 0				General Fund/EXPENDITURES/GENERAL SUPPORTIVE SERV		95.80	
120397	WA STATE DEPT OF LICENSING	10/13/2021	L0150002385	Driver Abstracts	1000010253	13.00	13.00
10 E 530 0100 28 7340 4300 0000 0000 1				General Fund/EXPENDITURES/BASIC EDUCATION		13.00	
120398	WA STATE - OMWBE	10/13/2021	30314056	Political subdivision fee for 7-1-21 to 6-30-23	1000010287	100.00	100.00
10 E 530 9700 11 7810 0000 0000 0000 0				General Fund/EXPENDITURES/GENERAL SUPPORTIVE SERV		100.00	
120399	WESTIN, KEVIN R	10/13/2021	21100605	DO WINDOW WASHING 10-6-21	1000010290	45.00	45.00
10 E 530 9700 63 7420 0000 0000 0000 0				General Fund/EXPENDITURES/GENERAL SUPPORTIVE SERV		45.00	
120400	WOODWORKERS NETWORK	10/13/2021	2122	SANDING BELT, DISKS, ROUTING BITS, LUMBER	1300007526	205.48	205.48
10 E 530 3100 27 5610 4300 2400 0000 0				General Fund/EXPENDITURES/VOCATIONAL		205.48	
120401	WSIPC	10/13/2021	1002100440	WSIPC Microsoft A3 Licenses Annual Subscription October - September FY 2022	2600001527	4,706.28	4,706.28
10 E 530 0100 32 5650 0000 0000 0000 0				General Fund/EXPENDITURES/BASIC EDUCATION		4,706.28	

Check Nbr	Vendor Name	Check Date	Invoice Number	Invoice Desc	PO Number	Invoice Amount	Check Amount
120402	WSIPC DBA WASWUG ANNUAL CONFER	10/13/2021	WF2021-102021-0869	WASWUG CONFERENCE FOR CHERYL SAWYER AND PRE CONFERENCE	1300007550	275.00	275.00
10 E 530 0100 31 7330 4300 0000 0000 0			General Fund/EXPENDITURES/BASIC EDUCATION			275.00	
120403	YCC INTERNATIONAL CORPORATION	10/13/2021	WWS210379	DISPOSABLE MASKS	1000010286	1,597.50	1,597.50
10 E 530 1200 26 5610 0000 0000 0000 0			General Fund/EXPENDITURES/Fed Stim - School Improve			1,597.50	
120404	ELAN CARDMEMBER SERVICE	10/13/2021	SA-083121B	VARSITY/UCA	8300006783	995.00	6,256.31
40 E 530 2130 00 0000 4300 0000 0000 0			Associated Student Body Fund/EXPENDITURES/CHEERLEADERS			995.00	
			SA-091521	Running Warehouse- Mens/Womens Shorts	8300006778	394.19	
40 E 530 2140 00 0000 4300 0000 0000 0			Associated Student Body Fund/EXPENDITURES/CROSS COUNTRY			394.19	
			SA-091621	TreeRing-Yearbook	8300006792	3,657.28	
40 E 530 4920 00 0000 4300 0000 0000 0			Associated Student Body Fund/EXPENDITURES/YEARBOOK			3,657.28	
			SA-091721	COSTCO, CASH/CARRY, SAFEWAY-CONCESSION S	8300006786	1,209.84	
40 E 530 1210 00 0000 4300 0000 0000 0			Associated Student Body Fund/EXPENDITURES/CONCESSIONS			1,209.84	
			51 Computer	Check(s) For a Total of			81,868.57

	0	Manual	Checks For a Total of	0.00
	0	Wire Transfer	Checks For a Total of	0.00
	0	ACH	Checks For a Total of	0.00
	51	Computer	Checks For a Total of	81,868.57
Total For	51	Manual, Wire Tran, ACH & Computer	Checks	81,868.57
Less	0	Voided	Checks For a Total of	0.00
			Net Amount	81,868.57

## FUND SUMMARY

Fund	Description	Balance Sheet	Revenue	Expense	Total
10	General Fund	-151.69	0.00	75,763.95	75,612.26
40	Associated Student Body Fund	0.00	0.00	6,256.31	6,256.31

The following vouchers, as audited and certified by the Auditing Officer as required by RCW 42.24.080, and those expense reimbursement claims certified as required by RCW 42.24.090, are approved for payment. Those payments have been recorded on this listing which has been made available to the board.

As of October 20, 2021, the board, by a \_\_\_\_\_ vote, approves payments, totaling \$80.00. The payments are further identified in this document.

Total by Payment Type for Cash Account, County Treasurer Warrants:  
Warrant Numbers 120353 through 120353, totaling \$80.00

Secretary \_\_\_\_\_ Board Member \_\_\_\_\_  
Board Member \_\_\_\_\_ Board Member \_\_\_\_\_  
Board Member \_\_\_\_\_ Board Member \_\_\_\_\_

Check Nbr	Vendor Name	Check Date	Invoice Number	Invoice Desc	PO Number	Invoice Amount	Check Amount
120353	NEWESD 101	10/13/2021	1222102441	PARAEDUCATOR TRAINING FOR ADLESPERGER AND OFFERDAHL 8-16, 8-17, 8-20-2021	1000010204	80.00	80.00
10 E 530 5866 31 7330 0000 0000 0000 0				General Fund/EXPENDITURES/PARA PROFESSIONAL DEV		80.00	
			1	Computer	Check(s) For a Total of		80.00



The following vouchers, as audited and certified by the Auditing Officer as required by RCW 42.24.080, and those expense reimbursement claims certified as required by RCW 42.24.090, are approved for payment. Those payments have been recorded on this listing which has been made available to the board.

As of October 20, 2021, the board, by a \_\_\_\_\_ vote, approves payments, totaling \$350.25. The payments are further identified in this document.

Total by Payment Type for Cash Account, AP ACH:  
ACH Numbers 212200001 through 212200002, totaling \$350.25

Secretary \_\_\_\_\_ Board Member \_\_\_\_\_  
Board Member \_\_\_\_\_ Board Member \_\_\_\_\_  
Board Member \_\_\_\_\_ Board Member \_\_\_\_\_

Check Nbr	Vendor Name	Check Date	Invoice Number	Invoice Desc	PO Number	Invoice Amount	Check Amount
212200001	WA STATE DEPT OF REVENUE	09/30/2021	CTAX11 20210927AAA	Comp Tax owed for Cash Account 11 through 09/30/2021	0	344.17	344.17
	10 L 630 0000 00 0000 0000 0000		General Fund/DUE TO OTHER	GOVERNMENT UNITS		344.17	
212200002	WA STATE DEPT OF REVENUE	09/30/2021	CTAX11 20210927AAB	Comp Tax owed for Cash Account 11 through 09/30/2021	0	6.08	6.08
	40 L 630 0000 00 0000 0000 0000		Associated Student Body Fund/DUE TO OTHER	GOVERNMENT UN		6.08	
			2	ACH	Check(s) For a Total of		350.25

The following vouchers, as audited and certified by the Auditing Officer as required by RCW 42.24.080, and those expense reimbursement claims certified as required by RCW 42.24.090, are approved for payment. Those payments have been recorded on this listing which has been made available to the board.

As of October 20, 2021, the board, by a \_\_\_\_\_ vote, approves payments, totaling \$43,807.13. The payments are further identified in this document.

Total by Payment Type for Cash Account, County Treasurer Warrants:  
Warrant Numbers 120309 through 120352, totaling \$43,807.13

Secretary \_\_\_\_\_ Board Member \_\_\_\_\_  
Board Member \_\_\_\_\_ Board Member \_\_\_\_\_  
Board Member \_\_\_\_\_ Board Member \_\_\_\_\_

Check Nbr	Vendor Name	Check Date	Invoice Number	Invoice Desc	PO Number	Invoice Amount	Check Amount
120309	A-L COMPRESSED GASES INC	09/30/2021	2084790	HELMETS, COLLET, NOZZLE, WHEEL, BRUSH-VOC SUPPLIES	1300007492	249.63	376.85
10 E 530 3100 27 5610 4300 2400 0000 0			General Fund/EXPENDITURES/VOCATIONAL			249.63	
			2090567	OPEN PO FOR SUPPLIES	1000010258	207.03	
10 E 530 3100 27 5610 4300 2400 0000 0			General Fund/EXPENDITURES/VOCATIONAL			207.03	
			2090717	OPEN PO FOR SUPPLIES	1000010258	285.46	
10 E 530 3100 27 5610 4300 2400 0000 0			General Fund/EXPENDITURES/VOCATIONAL			285.46	
			2092221	OPEN PO FOR SUPPLIES	1000010258	-207.03	
10 E 530 3100 27 5610 4300 2400 0000 0			General Fund/EXPENDITURES/VOCATIONAL			-207.03	
			2092654	60 SAFETY GLASSES	1300007530	37.96	
10 E 530 3100 27 5610 4300 2400 0000 0			General Fund/EXPENDITURES/VOCATIONAL			37.96	
			2093012	OPEN PO FOR SUPPLIES	1000010258	-196.20	
10 E 530 3100 27 5610 4300 2400 0000 0			General Fund/EXPENDITURES/VOCATIONAL			-196.20	
120310	AMAZON	09/30/2021	DO-081921	Whiteboards and magnetic label cards for Jason Ferrins	1000010182	747.42	3,806.18
10 E 530 9700 12 5610 0000 0000 0000 0			General Fund/EXPENDITURES/GENERAL SUPPORTIVE SERV			747.42	
			GESS-083121	floor decals for social distancing	1100007670	252.06	

Check Nbr	Vendor Name	Check Date	Invoice Number	Invoice Desc	PO Number	Invoice Amount	Check Amount
				ESSER II			
10 E 530 1200 27 5610 1100 0000 0000 0				General Fund/EXPENDITURES/Fed Stim - School Improve		252.06	
			GESS-083121B	k supplies	1100007674	104.44	
10 E 530 0100 27 5610 1100 0000 0000 0				General Fund/EXPENDITURES/BASIC EDUCATION		104.44	
			GESS-090421	supplies	1100007680	68.45	
10 E 530 0100 27 5610 1100 0000 0000 0				General Fund/EXPENDITURES/BASIC EDUCATION		68.45	
			JJSHS-083121	Counseling office supplies.	1300007523	141.12	
10 E 530 0100 24 5610 4300 0000 0000 0				General Fund/EXPENDITURES/BASIC EDUCATION		141.12	
			QL-082721	Amazon 410 color ink cartridges for 452 Laser Jet Printer - office	1400007647	832.26	
10 E 530 0200 23 5610 5400 0000 0000 0				General Fund/EXPENDITURES/ALTERNATIVE BASIC ED		832.26	
			ql-083021	Plastic storage for Book Shark	1400007636	187.90	
10 E 530 0200 27 5610 5400 0000 0000 0				General Fund/EXPENDITURES/ALTERNATIVE BASIC ED		187.90	
			QL-083021B	Internet address book Skill Sharpener Geography 2 Mora's 6 trait writing 5 Mora's	1400007640	34.91	
10 E 530 0200 33 5640 5400 0000 0000 0				General Fund/EXPENDITURES/ALTERNATIVE BASIC ED		34.91	
			QL-083021C	Math for Penelope Sitts Key to Fractions, Decimals and measurement	1400007642	128.01	
10 E 530 0200 33 5640 5400 0000 0000 0				General Fund/EXPENDITURES/ALTERNATIVE BASIC ED		128.01	
			QL-090421	Saxon Math 3-142.00 Saxon 2 49.89 Saxon 5/4 106.85 All things 33.70 Papaer 10.89 Paper 7.11 Building writers 11.31 Cursive success 13.75 My print 13.60 My letters13.75	1400007660	224.70	

Check Nbr	Vendor Name	Check Date	Invoice Number	Invoice Desc	PO Number	Invoice Amount	Check Amount
				Ember Rising 15.95 Keyboard tray 59.99			
10 E 530 0200 33 5640 5400 0000 0000 0				General Fund/EXPENDITURES/ALTERNATIVE BASIC ED		115.92	
10 E 530 0200 23 5610 5400 0000 0000 0				General Fund/EXPENDITURES/ALTERNATIVE BASIC ED		108.78	
			QL-090721	McGraw Hill Math 4 Vol. 1 14.39 and 2 32.09 3 tier organizer 25.99 Chair 142.24 total 168.23 Spanish grammar chart 6.95 Spanish verbs, 6.83 Spanish word to word dictionary 7.50 Notebooks 31.10 Composition Notebooks 18.59 Building writers, 11.31 My print book 13.60, Get ready for school 29.71 Didax wipe 10 frame mats 15.95	1400007653	523.69	
10 E 530 0200 33 5640 5400 0000 0000 0				General Fund/EXPENDITURES/ALTERNATIVE BASIC ED		364.59	
10 E 530 0200 23 5610 5400 0000 0000 0				General Fund/EXPENDITURES/ALTERNATIVE BASIC ED		159.10	
			TECH-082721	Monitors, power cubes, printers, speakers and cable raceways.	2600001530	-13.92	
10 E 530 0200 32 5650 5400 0000 0000 0				General Fund/EXPENDITURES/ALTERNATIVE BASIC ED		-13.92	
			TECH-090221	Video recording accessories for Jason Perrins	2600001551	575.14	
10 E 530 0100 32 5650 0000 0000 0000 0				General Fund/EXPENDITURES/BASIC EDUCATION		575.14	
120311 BSN SPORTS		09/30/2021	913638624	1459287 COLLEGIATE FB HELMET Extra Curricular	1300007511	353.77	353.77
10 E 530 0100 28 5610 4300 0000 0000 1				General Fund/EXPENDITURES/BASIC EDUCATION		353.77	
120312 CANON FINANCIAL SERVICES		09/30/2021	27354802	Copier Lease Contract	1000010213	713.48	755.85

Check Nbr	Vendor Name	Check Date	Invoice Number	Invoice Desc	PO Number	Invoice Amount	Check Amount
				05214/3091			
10 E 530 0100 23 7442 1100 0000 0000 0				General Fund/EXPENDITURES/BASIC EDUCATION		296.24	
10 E 530 0100 23 7442 4300 0000 0000 0				General Fund/EXPENDITURES/BASIC EDUCATION		266.88	
10 E 530 0200 23 7442 5400 0000 0000 0				General Fund/EXPENDITURES/ALTERNATIVE BASIC ED		41.92	
10 E 530 9700 13 7442 0000 0000 0000 0				General Fund/EXPENDITURES/GENERAL SUPPORTIVE SERV		108.44	
			27354803	Copier Lease Contract	1000010213	42.37	
				05214/3091			
10 E 530 0200 23 7442 5400 0000 0000 0				General Fund/EXPENDITURES/ALTERNATIVE BASIC ED		42.37	
120313 CENTURYLINK		09/30/2021	091521	PHONE CHARGES	1000010214	403.59	403.59
				ACCT #300738678			
10 E 530 9700 65 7530 0000 0000 0000 0				General Fund/EXPENDITURES/GENERAL SUPPORTIVE SERV		403.59	
120314 CENTURYLINK		09/30/2021	2492939388	PHONE SERVICE	1000010215	58.16	58.16
				ACCT #84728321			
10 E 530 9700 65 7530 0000 0000 0000 0				General Fund/EXPENDITURES/GENERAL SUPPORTIVE SERV		58.16	
120315 CHEWELAH AUTO PARTS		09/30/2021	001-245039	TRANSPORTATION	1000010216	31.93	31.93
				SUPPLIES ACCT #68			
10 E 530 9700 62 5610 0000 0000 0000 0				General Fund/EXPENDITURES/GENERAL SUPPORTIVE SERV		31.93	
120316 CHEWELAH INDEPENDENT		09/30/2021	081921	EMPLOYMENT ADS FOR MECHANIC, NURSE, COACHING, CUSTODIAL - 3 WEEKS	1000010175	19.80	49.80
10 E 530 9700 14 7540 0000 0000 0000 0				General Fund/EXPENDITURES/GENERAL SUPPORTIVE SERV		19.80	
			090121	SUBSCRIPTION RENEWEL	1300007540	30.00	
10 E 530 0100 23 5640 4300 0000 0000 0				General Fund/EXPENDITURES/BASIC EDUCATION		30.00	
120317 CHEWELAH SCHOOL DISTRICT #36 I		09/30/2021	093021	REPLENISH IMPREST ACCOUNT-COTE & KIWANIS	0	556.00	556.00
10 L 610 0000 00 0000 0000 0000 0000				General Fund/PAYROLL DED & TAX PAYABLE		500.00	
10 E 530 9700 12 7810 0000 0000 0000 0				General Fund/EXPENDITURES/GENERAL SUPPORTIVE SERV		56.00	
120318 CONSOLIDATED ELECTRICAL DISTRI		09/30/2021	8190-1031356	Ballast (CED)	2300006355	388.30	388.30
10 E 530 9700 64 5610 0000 0000 0000 0				General Fund/EXPENDITURES/GENERAL SUPPORTIVE SERV		388.30	
120319 EDGENUITY		09/30/2021	838201	EDGENUITY - integrate with STAR - \$500.00	1400007665	538.00	538.00
10 E 530 0200 33 5650 5400 0000 0000 0				General Fund/EXPENDITURES/ALTERNATIVE BASIC ED		538.00	
120320 ETS EDUCATIONAL TESTING SERVIC		09/30/2021	OM20248178	Paraeducator test for Hannah	1000010273	55.00	55.00

Check Nbr	Vendor Name	Check Date	Invoice Number	Invoice Desc	PO Number	Invoice Amount	Check Amount
				Rollins			
10 E 530 9700 14 7340 0000 0000 0000 0				General Fund/EXPENDITURES/GENERAL SUPPORTIVE SERV		55.00	
120321	FOLLET SCHOOL SOLUTIONS	09/30/2021	1450278	DESTINY FOR THREE LIBRARIES Nov2021-Oct 2022	1000010270	2,689.81	2,689.81
10 E 530 0200 22 5650 5400 0000 0000 0				General Fund/EXPENDITURES/ALTERNATIVE BASIC ED		768.13	
10 E 530 0100 22 5650 1100 0000 0000 0				General Fund/EXPENDITURES/BASIC EDUCATION		960.84	
10 E 530 0100 22 5650 4300 0000 0000 0				General Fund/EXPENDITURES/BASIC EDUCATION		960.84	
120322	GREGERSON, BRENDA J	09/30/2021	091521	REIMBURSE FOR STUDENT SCHOOL SUPPLIES	0	701.51	701.51
10 E 530 0100 27 5610 1100 0000 0000 0				General Fund/EXPENDITURES/BASIC EDUCATION		701.51	
120323	H & H INC	09/30/2021	AR209138	COPIER MONTHLY USAGE CHARGES	1000010225	13.44	13.44
10 E 530 0100 23 7340 4300 0000 0000 0				General Fund/EXPENDITURES/BASIC EDUCATION		13.44	
120324	HEARTLAND PAYMENT SYSTEMS	09/30/2021	HSSREC017797	FOOD SERVICE ANNUAL MENU PLANNING AND PRODUCTION RECORD SOFTWARE 8-1-21 TO 7-31-22	1000010275	420.00	420.00
10 L 630 0000 00 0000 0000 0000 0000				General Fund/DUE TO OTHER GOVERNMENT UNITS		-31.92	
10 E 530 9800 44 5650 0000 0000 0000 0				General Fund/EXPENDITURES/FOOD SERVICES		451.92	
120325	HOUSE OF MUSIC	09/30/2021	193535GESS	band supplies-GESS	1100007688	794.94	1,207.48
10 E 530 0100 27 5610 1100 0000 0000 0				General Fund/EXPENDITURES/BASIC EDUCATION		794.94	
			193535JJSHS	BAND SUPPLIES-JJSHS	1300007534	412.54	
10 E 530 0100 27 5610 4300 1400 0000 0				General Fund/EXPENDITURES/BASIC EDUCATION		412.54	
120326	IN TOUCH	09/30/2021	IN018341	IT RECEIPTING HOSTING SERVICE ANNUAL 9-1-21 TO 8-31-22	1000010265	710.16	1,404.19
10 E 530 0100 32 5650 4300 3320 0000 0				General Fund/EXPENDITURES/BASIC EDUCATION		355.08	
10 E 530 0100 32 5650 1100 3320 0000 0				General Fund/EXPENDITURES/BASIC EDUCATION		355.08	
			IN018342	IT Receipting help desk software support for 2021-22 school year	1000010269	694.03	
10 E 530 0100 32 5650 4300 3320 0000 0				General Fund/EXPENDITURES/BASIC EDUCATION		520.52	
10 E 530 0100 32 5650 1100 3320 0000 0				General Fund/EXPENDITURES/BASIC EDUCATION		173.51	

Check Nbr	Vendor Name	Check Date	Invoice Number	Invoice Desc	PO Number	Invoice Amount	Check Amount
120327	KCDA PURCHASING COOPERATIVE	09/30/2021	300574775	supplies	1100007677	463.32	10,530.17
10 E 530 0100 27 5610 1100 0000 0000 0			General Fund/EXPENDITURES/BASIC EDUCATION			463.32	
			300574776	freestanding acrylic guards for lunch tables- ESSER II	1100007681	5,334.60	
10 E 530 1200 44 5610 1100 0000 0000 0			General Fund/EXPENDITURES/Fed Stim - School Improve			5,334.60	
			300577161	desks to socially distance due to COVID-19-chg to ESSER II	1100007683	4,732.25	
10 E 530 1200 27 5610 1100 0000 0000 0			General Fund/EXPENDITURES/Fed Stim - School Improve			4,732.25	
120328	NCS PEARSON INC	09/30/2021	15575324	33-8580 Pearson aimsweb Plus Learning Academy 12 month access Qty. 2	1400007593	790.00	790.00
10 E 530 0200 31 7330 5400 0000 0000 0			General Fund/EXPENDITURES/ALTERNATIVE BASIC ED			790.00	
120329	OFFICE DEPOT	09/30/2021	188252613001	OFFICE SUPPLIES paper shredder tape pens sharpies	1300007521	1,039.83	1,575.84
10 E 530 0100 23 5610 4300 0000 0000 0			General Fund/EXPENDITURES/BASIC EDUCATION			1,039.83	
			188252613002	OFFICE SUPPLIES paper shredder tape pens sharpies	1300007521	13.02	
10 E 530 0100 23 5610 4300 0000 0000 0			General Fund/EXPENDITURES/BASIC EDUCATION			13.02	
			188305172001	OFFICE SUPPLIES paper shredder tape pens sharpies	1300007521	89.72	
10 E 530 0100 23 5610 4300 0000 0000 0			General Fund/EXPENDITURES/BASIC EDUCATION			89.72	
			188926986001	CLASSROOM SUPPLIES	1300007517	162.33	
10 E 530 0100 27 5610 4300 4000 0000 0			General Fund/EXPENDITURES/BASIC EDUCATION			162.33	
			188926986002	CLASSROOM SUPPLIES	1300007517	5.27	
10 E 530 0100 27 5610 4300 4000 0000 0			General Fund/EXPENDITURES/BASIC EDUCATION			5.27	
			189062988001	OFFICE SUPPLIES paper shredder	1300007521	39.67	

Check Nbr	Vendor Name	Check Date	Invoice Number	Invoice Desc	PO Number	Invoice Amount	Check Amount
10 E 530 0100 23 5610 4300 0000 0000 0				tape pens sharpies General Fund/EXPENDITURES/BASIC EDUCATION		39.67	
			189062988002	OFFICE SUPPLIES paper shredder tape pens sharpies	1300007521	8.65	
10 E 530 0100 23 5610 4300 0000 0000 0				General Fund/EXPENDITURES/BASIC EDUCATION		8.65	
			189199857001	CLASSROOM SUPPLIES	1300007516	36.90	
10 E 530 0100 27 5610 4300 4000 0000 0				General Fund/EXPENDITURES/BASIC EDUCATION		36.90	
			189201300001	OFFICE SUPPLIES paper shredder tape pens sharpies	1300007521	12.27	
10 E 530 0100 23 5610 4300 0000 0000 0				General Fund/EXPENDITURES/BASIC EDUCATION		12.27	
			189239528001	CLASSROOM SUPPLIES	1300007515	96.12	
10 E 530 0100 27 5610 4300 4040 0000 0				General Fund/EXPENDITURES/BASIC EDUCATION		96.12	
			189239528002	CLASSROOM SUPPLIES	1300007515	8.60	
10 E 530 0100 27 5610 4300 4040 0000 0				General Fund/EXPENDITURES/BASIC EDUCATION		8.60	
			189267100001	CLASSROOM SUPPLIES	1300007512	63.46	
10 E 530 0100 27 5610 4300 1840 0000 0				General Fund/EXPENDITURES/BASIC EDUCATION		63.46	
			192652513001	CLASSROOM SUPPLIES	1300007517	-15.95	
10 E 530 0100 27 5610 4300 4000 0000 0				General Fund/EXPENDITURES/BASIC EDUCATION		-15.95	
			192663462001	CLASSROOM SUPPLIES	1300007517	15.95	
10 E 530 0100 27 5610 4300 4000 0000 0				General Fund/EXPENDITURES/BASIC EDUCATION		15.95	
120330	ORIENTAL TRADING COMPANY INC	09/30/2021	711519595-01	5th grade supplies	1100007678	86.03	86.03
10 E 530 0100 27 5610 1100 0000 0000 0				General Fund/EXPENDITURES/BASIC EDUCATION		86.03	
120331	OVATION COMPANY	09/30/2021	1172	Stu Cabe guest speaker	1300007528	2,100.00	2,100.00
10 E 530 0100 24 7340 4300 0000 0000 0				General Fund/EXPENDITURES/BASIC EDUCATION		2,100.00	
120332	PACIFIC PETROLEUM & SUPPLY	09/30/2021	389050	OPEN PO FOR BUS PURCHASES	1000010239	243.26	243.26



Check Nbr	Vendor Name	Check Date	Invoice Number	Invoice Desc	PO Number	Invoice Amount	Check Amount
10 E 530 9900 53 5610 0000 0000 0000 0				General Fund/EXPENDITURES/PUPIL TRANSPORTATION		243.26	
120333	PURCHASE POWER	09/30/2021	091721	POSTAGE FOR METER ACCT #8000-9090-1050-45 90	1000010237	400.00	400.00
10 E 530 0100 23 5610 1100 0000 0000 0				General Fund/EXPENDITURES/BASIC EDUCATION		86.58	
10 E 530 0100 23 5610 4300 0000 0000 0				General Fund/EXPENDITURES/BASIC EDUCATION		12.45	
10 E 530 9700 13 5610 0000 0000 0000 0				General Fund/EXPENDITURES/GENERAL SUPPORTIVE SERV		272.45	
10 E 530 0200 23 5610 5400 0000 0000 0				General Fund/EXPENDITURES/ALTERNATIVE BASIC ED		28.52	
120334	QCL INC	09/30/2021	49383	TRANSPORTATION SERVICES DRUG TESTS	1000010240	1,120.00	1,120.00
10 E 530 9900 52 7340 0000 0000 0000 0				General Fund/EXPENDITURES/PUPIL TRANSPORTATION		1,120.00	
120335	QUILL CORPORATION	09/30/2021	19191276	kindergarten order	1100007676	101.32	101.32
10 E 530 0100 27 5610 1100 0000 0000 0				General Fund/EXPENDITURES/BASIC EDUCATION		101.32	
120336	RWC GROUP	09/30/2021	XA106018379:01	2021-2022 BUS PURCHASES	1000010242	108.49	108.49
10 E 530 9900 53 5610 0000 0000 0000 0				General Fund/EXPENDITURES/PUPIL TRANSPORTATION		108.49	
120337	SCHOOL SPECIALTY INC	09/30/2021	208128618685	k supplies	1100007673	178.20	178.20
10 E 530 0100 27 5610 1100 0000 0000 0				General Fund/EXPENDITURES/BASIC EDUCATION		178.20	
120338	SMITH, DENISE	09/30/2021	091321	First Aid Classes 9-13-21 FOR STOLP&WULCZYNSKI	1000010244	100.00	100.00
10 E 530 2100 31 7330 4300 0000 0000 0				General Fund/EXPENDITURES/SPED STATE		50.00	
10 E 530 9900 51 7330 0000 0000 0000 0				General Fund/EXPENDITURES/PUPIL TRANSPORTATION		50.00	
120339	TILLA, KALLIE J	09/30/2021	091021	REIMBURSE FOR STEAM SUPPLIES & DECOR	0	78.54	78.54
10 E 530 0100 27 5610 1100 0000 0000 0				General Fund/EXPENDITURES/BASIC EDUCATION		78.54	
120340	US FOODS	09/30/2021	092021	FOOD SERVICE SUPPLIES CUSTOMER #9018139	1000010250	3,927.21	3,927.21
10 E 530 9800 42 5630 0000 0000 0000 0				General Fund/EXPENDITURES/FOOD SERVICES		3,161.51	
10 E 530 9800 44 5610 0000 0000 0000 0				General Fund/EXPENDITURES/FOOD SERVICES		765.70	
120341	VERIZON WIRELESS	09/30/2021	9887802300	CELL PHONE SERVICES ACCT #365401170-0000i	1000010251	590.09	607.19
10 E 530 9700 65 7530 0000 0000 0000 0				General Fund/EXPENDITURES/GENERAL SUPPORTIVE SERV		590.09	
			9888482876	CELL PHONE	1000010251	17.10	

Check Nbr	Vendor Name	Check Date	Invoice Number	Invoice Desc	PO Number	Invoice Amount	Check Amount
				SERVICES ACCT #264213436-00001			
10 E 530 9700 65 7530 0000 0000 0000 0			General Fund/EXPENDITURES/GENERAL SUPPORTIVE SERV			17.10	
120342	WALTER E NELSON CO	09/30/2021	451486	SUPPLIES	1300007533	2,014.74	3,585.76
10 E 530 9700 63 5610 4300 0000 0000 0			General Fund/EXPENDITURES/GENERAL SUPPORTIVE SERV			2,014.74	
			451521	Quartzite learning Custodial supplies	2300006354	1,571.02	
10 E 530 9700 63 5610 5400 0000 0000 0			General Fund/EXPENDITURES/GENERAL SUPPORTIVE SERV			1,571.02	
120343	WASBO	09/30/2021	200022360	Payroll, personnel & retirement workshop Nov 1 and Nov 3, 2021 for Reanna Durham	1000010267	200.00	200.00
10 E 530 9700 13 7330 0000 0000 0000 0			General Fund/EXPENDITURES/GENERAL SUPPORTIVE SERV			200.00	
120344	WESTERN FIRST AID AND SAFETY	09/30/2021	GEG1-001454	First Aid Products (Maintenance)	2300006351	176.29	176.29
10 E 530 9700 64 5610 0000 0000 0000 0			General Fund/EXPENDITURES/GENERAL SUPPORTIVE SERV			176.29	
120345	WSIPC	09/30/2021	1002100240	IEP Online Annual Software & Recurring Fees Sept 2021-Aug 2022	2100006166	1,517.80	1,517.80
10 E 530 2100 27 5650 0000 0000 0000 0			General Fund/EXPENDITURES/SPED STATE			1,517.80	
120346	WSIPC DBA WASWUG ANNUAL CONFER	09/30/2021	WF2021-092021-0710	Waswug Conference for Toni Lundquist Oct 11-13, 2021	1400007635	275.00	475.00
10 E 530 0200 31 7330 5400 0000 0000 0			General Fund/EXPENDITURES/ALTERNATIVE BASIC ED			275.00	
			wf2021-092021-0711	Waswug Conference for Kim Stricker Oct 11-13, 2021	1400007635	200.00	
10 E 530 0200 31 7330 5400 0000 0000 0			General Fund/EXPENDITURES/ALTERNATIVE BASIC ED			200.00	
120347	WSPA	09/30/2021	CEV-00128	Training for Reanna Durham-8-21-2021 Employee Termination for Vaccine	1000010274	65.00	240.00

Check Nbr	Vendor Name	Check Date	Invoice Number	Invoice Desc	PO Number	Invoice Amount	Check Amount
				Non-Compliance			
10 E 530 9700 13 7330 0000 0000 0000 0				General Fund/EXPENDITURES/GENERAL SUPPORTIVE SERV		65.00	
			CM-00713	ANNUAL WSPA	1000010271	175.00	
				MEMBERSHIP FOR			
				KATY GAFFNEY			
10 E 530 9700 12 7810 0000 0000 0000 0				General Fund/EXPENDITURES/GENERAL SUPPORTIVE SERV		175.00	
120348 HUDL		09/30/2021	INV01211023	Hudl Silver/ Play	8300006798	1,182.53	1,182.53
				tools			
40 E 530 2150 00 0000 4300 0000 0000 0				Associated Student Body Fund/EXPENDITURES/FOOTBALL		1,182.53	
120349 MARKE, AUBREY A		09/30/2021	092421	REIMBURSE	0	100.62	100.62
				-WESTSIDE PIZZA			
				FOR FFA MEETING			
40 E 530 4310 00 0000 4300 0000 0000 0				Associated Student Body Fund/EXPENDITURES/FFA		100.62	
120350 NATIONAL FFA ORGANIZATION		09/30/2021	MDS224605	100T-4000 Mens	8300006791	80.00	80.00
				Tailored Jacket			
40 E 530 4310 00 0000 4300 0000 0000 0				Associated Student Body Fund/EXPENDITURES/FFA		86.08	
40 L 630 0000 00 0000 0000 0000 0000				Associated Student Body Fund/DUE TO OTHER GOVERNMENT UN		-6.08	
120351 VARSITY SPIRIT FASHION		09/30/2021	52271100	MOTION FLEX	8300006782	403.02	403.02
				MIDRIFF			
40 E 530 2130 00 0000 4300 0000 0000 0				Associated Student Body Fund/EXPENDITURES/CHEERLEADERS		403.02	
120352 WA STUDENT LEADERSHIP PROGRAM		09/30/2021	000020096-090121	Membership Dues	8300006795	90.00	90.00
40 E 530 1001 00 0000 4300 0000 0000 0				Associated Student Body Fund/EXPENDITURES/GENERAL		90.00	
			44	Computer	Check(s) For a Total of		43,807.13

Check Summary

	0	Manual	Checks For a Total of	0.00
	0	Wire Transfer	Checks For a Total of	0.00
	0	ACH	Checks For a Total of	0.00
	44	Computer	Checks For a Total of	43,807.13
Total For	44	Manual, Wire Tran, ACH & Computer	Checks	43,807.13
Less	0	Voided	Checks For a Total of	0.00
			Net Amount	43,807.13

FUND SUMMARY

Fund	Description	Balance Sheet	Revenue	Expense	Total
10	General Fund	468.08	0.00	41,482.88	41,950.96
40	Associated Student Body Fund	-6.08	0.00	1,862.25	1,856.17

The following vouchers, as audited and certified by the Auditing Officer as required by RCW 42.24.080, and those expense reimbursement claims certified as required by RCW 42.24.090, are approved for payment. Those payments have been recorded on this listing which has been made available to the board.

As of October 20, 2021, the board, by a \_\_\_\_\_ vote, approves payments, totaling \$55,973.29. The payments are further identified in this document.

Total by Payment Type for Cash Account, County Treasurer Warrants:  
Warrant Numbers 120303 through 120308, totaling \$55,973.29

Secretary \_\_\_\_\_ Board Member \_\_\_\_\_  
Board Member \_\_\_\_\_ Board Member \_\_\_\_\_  
Board Member \_\_\_\_\_ Board Member \_\_\_\_\_

Check Nbr	Vendor Name	Check Date	Invoice Number	Invoice Desc	PO Number	Invoice Amount	Check Amount
120303	AMAZON	09/30/2021	MAINT-081021	Dewalt battery/ drill	2300006323	391.65	1,497.40
10 E 530 9700 64 5610 0000 0000 0000 0			General Fund/EXPENDITURES/GENERAL SUPPORTIVE SERV			391.65	
			MAINT-081421	power washer concrete scrubber	2300006326	224.51	
10 E 530 9700 64 5610 0000 0000 0000 0			General Fund/EXPENDITURES/GENERAL SUPPORTIVE SERV			224.51	
			MAINT-081521	Hvac Guage/ Gess faucets 2, misc	2300006324	881.24	
10 E 530 9700 64 5610 0000 0000 0000 0			General Fund/EXPENDITURES/GENERAL SUPPORTIVE SERV			881.24	
120304	AVISTA UTILITIES	09/30/2021	090721	UTILITIES	1000010211	775.72	775.72
10 E 530 9700 65 7621 0000 0000 0000 0			General Fund/EXPENDITURES/GENERAL SUPPORTIVE SERV			134.19	
10 E 530 9700 65 7621 1100 0000 0000 0			General Fund/EXPENDITURES/GENERAL SUPPORTIVE SERV			118.53	
10 E 530 9700 65 7621 2200 0000 0000 0			General Fund/EXPENDITURES/GENERAL SUPPORTIVE SERV			114.01	
10 E 530 9700 65 7621 4300 0000 0000 0			General Fund/EXPENDITURES/GENERAL SUPPORTIVE SERV			360.04	
10 E 530 9700 65 7621 5400 0000 0000 0			General Fund/EXPENDITURES/GENERAL SUPPORTIVE SERV			48.95	
120305	CENTRAL WASHINGTON UNIVERSITY	09/30/2021	T-2018-OCT-01	ACCUPLACER TESTS-AUGUST 2021	1300007532	315.00	330.00
10 E 530 0100 24 7340 4300 0000 0000 0			General Fund/EXPENDITURES/BASIC EDUCATION			315.00	
			T-2019-SEP-04	ACCUPLACER TESTS-FEB 2020	1300007532	15.00	
10 E 530 0100 24 7340 4300 0000 0000 0			General Fund/EXPENDITURES/BASIC EDUCATION			15.00	
120306	COLE'S CUSTOM CLEANING, INC.	09/30/2021	15132	CLEAN CARPETS AND WAX FLOORS AT QL AND DO-JULY 2021	1000010277	2,469.25	2,469.25
10 E 530 9700 63 7420 0000 0000 0000 0			General Fund/EXPENDITURES/GENERAL SUPPORTIVE SERV			433.37	
10 E 530 9700 63 7420 5400 0000 0000 0			General Fund/EXPENDITURES/GENERAL SUPPORTIVE SERV			2,035.88	

Check Nbr	Vendor Name	Check Date	Invoice Number	Invoice Desc	PO Number	Invoice Amount	Check Amount
120307	STEVENS COUNTY AUDITOR	09/30/2021	091321	August 3, 2021 Primary Election Costs	1000010276	6,381.67	6,381.67
10 E 530 9700 11 7311 0000 0000 0000 0				General Fund/EXPENDITURES/GENERAL SUPPORTIVE SERV		6,381.67	
120308	ABSCO SOLUTIONS	09/30/2021	79897	Access control migration to Avigilon	7100000804	43,460.47	44,519.25
20 L 601 0000 00 0000 0000 0000 0000				Capital Projects/ACCOUNTS PAYABLE		-2,117.96	
20 E 530 2101 32 5000 2000 0000 0000 0				Capital Projects/EXPENDITURES/ACCESS CONTROL		45,578.43	
			79898	Add Mobile Credential Licenses to access control project	7100000805	1,058.78	
20 E 530 2101 32 5000 2000 0000 0000 0				Capital Projects/EXPENDITURES/ACCESS CONTROL		1,058.78	
			6	Computer	Check(s) For a Total of		55,973.29

	0	Manual	Checks For a Total of	0.00
	0	Wire Transfer	Checks For a Total of	0.00
	0	ACH	Checks For a Total of	0.00
	6	Computer	Checks For a Total of	55,973.29
Total For	6	Manual, Wire Tran, ACH & Computer	Checks	55,973.29
Less	0	Voided	Checks For a Total of	0.00
			Net Amount	55,973.29

FUND SUMMARY

Fund	Description	Balance Sheet	Revenue	Expense	Total
10	General Fund	0.00	0.00	11,454.04	11,454.04
20	Capital Projects	-2,117.96	0.00	46,637.21	44,519.25

The following vouchers, as audited and certified by the Auditing Officer as required by RCW 42.24.080, and those expense reimbursement claims certified as required by RCW 42.24.090, are approved for payment. Those payments have been recorded on this listing which has been made available to the board.

As of October 20, 2021, the board, by a \_\_\_\_\_ vote, approves payments, totaling \$59,365.51. The payments are further identified in this document.

Total by Payment Type for Cash Account, County Treasurer Warrants:

Warrant Numbers 120250 through 120276, totaling \$59,365.51

Secretary \_\_\_\_\_ Board Member \_\_\_\_\_

Board Member \_\_\_\_\_ Board Member \_\_\_\_\_

Board Member \_\_\_\_\_ Board Member \_\_\_\_\_

Check Nbr	Vendor Name	Check Date	Invoice Number	Invoice Desc	PO Number	Invoice Amount	Check Amount
120250	AT&T MOBILITY	09/15/2021	287301239699X0828202	BACKUP INTERNET CONNECTION FOR PHONE SYSTEM	1000010210	50.09	50.09
10 E 530 9700 65 7530 0000 0000 0000 0				General Fund/EXPENDITURES/GENERAL SUPPORTIVE SERV		50.09	
120251	BOOKSHARK LLC	09/15/2021	31132929	33-5640 Science 1 Megan Watts Lan. Arts Instructor 73.24 Ryder China Kit 27.99 Ryder Time line Fig. F 8.00 History Inst. F 115.98 Level F all subject Dmitry 843.00 Health and Human 10-13 Dmitry 137.55 Science F 189.84 Ryder Science A 207.17 Pardini Science consumables 15.99 Pardini Science Experiment pack 12.99 Pardini Science stickers 3.99 Pardini Discover and do Supplies kit 74.99 Boles Science D Inst. 54.99 Boles	1400007606	44.51	44.51



Check Nbr	Vendor Name	Check Date	Invoice Number	Invoice Desc	PO Number	Invoice Amount	Check Amount
				Wordly Wise 14.35 Wordly wise 3000 Book 3 21.25 Level A All subject 772.99 Jackson Hughes Time line figures 1 8.00 What makes you ill 4.99 Science B Inst. 51.99 Ava Science B Experiment book Ava 24.99 Discover and do B kit 74.99 Ava Hands on word History 1 59.99 Ava Level C All subject 821.00 Adaline Level C Reading with History Jameson 581.99			
10 E 530 0200 33 5640 5400 0000 0000 0				General Fund/EXPENDITURES/ALTERNATIVE BASIC ED		44.51	
120252	BOYD, PATRICIA E	09/15/2021	082321	REIMBURSE FOR CLASSROOM SUPPLIES	0	127.71	127.71
10 E 530 0100 27 5610 1100 0000 0000 0				General Fund/EXPENDITURES/BASIC EDUCATION		127.71	
120253	CHEWELAH INDEPENDENT	09/15/2021	2659	LEGAL AD-NONDISCRIMINATI ON NOTICE	1000010203	76.00	76.00
10 E 530 9700 14 7540 0000 0000 0000 0				General Fund/EXPENDITURES/GENERAL SUPPORTIVE SERV		76.00	
120254	CRYSTAL SPRINGS	09/15/2021	15901662 091121	WATER AND COOLER RENTAL	1400007650	24.73	35.49
10 E 530 0200 23 5610 5400 0000 0000 0				General Fund/EXPENDITURES/ALTERNATIVE BASIC ED		24.73	
			15902043 091121	WATER AND COOLER RENTAL	1000010220	10.76	
10 E 530 9700 13 5610 0000 0000 0000 0				General Fund/EXPENDITURES/GENERAL SUPPORTIVE SERV		10.76	
120255	DEERE CREDIT INC	09/15/2021	2541389	LEASE 1600 COMMERCIAL WIDE AREA LAWN MOWER	1000010221	647.17	647.17
10 E 530 9700 84 7831 0000 0000 0000 0				General Fund/EXPENDITURES/GENERAL SUPPORTIVE SERV		647.17	
120256	ELAN CARDMEMBER SERVICE	09/15/2021	ED-082621	Pearson Invoice 15194150 Aimesweb	1400007637	322.80	3,039.50

Check Nbr	Vendor Name	Check Date	Invoice Number	Invoice Desc	PO Number	Invoice Amount	Check Amount
				plus 40 322.80			
10 E 530 0200 32 5650 5400 0000 0000 0				General Fund/EXPENDITURES/ALTERNATIVE BASIC ED		322.80	
			ED-082721	Logic of English 2 Phonogram Game tiles	1400007644	41.23	
10 E 530 0200 33 5640 5400 0000 0000 0				General Fund/EXPENDITURES/ALTERNATIVE BASIC ED		41.23	
			ED-083021	5 Texas Instruments TI-30X IIS Scientific Calculator, 10-Digit LCD \$11.97	1400007643	64.40	
10 E 530 0300 27 5610 6000 0000 0000 0				General Fund/EXPENDITURES/OPEN DOORS		64.40	
			JP-082021	subscription - Presenter media	1100007686	49.95	
10 E 530 0100 23 7810 1100 0000 0000 0				General Fund/EXPENDITURES/BASIC EDUCATION		49.95	
			JP-082321	office depot school supplies	1100007671	351.24	
10 E 530 0100 27 5610 1100 0000 0000 0				General Fund/EXPENDITURES/BASIC EDUCATION		351.24	
			JP-082521	Costa Vida all staff meeting luncheon split with CEA & CPEA	0	1,546.38	
10 E 530 9700 12 5610 0000 0000 0000 0				General Fund/EXPENDITURES/GENERAL SUPPORTIVE SERV		1,546.38	
			JP-082721	subscription for teachers - Screencast o matic	1100007685	390.00	
10 E 530 0100 27 7340 1100 0000 0000 0				General Fund/EXPENDITURES/BASIC EDUCATION		390.00	
			MS-080721	FRANKLIN PLANNER-PLANNERS FOR REANNA AND KATY FOR JUL 2021-JUN 2022	1000010189	186.18	
10 E 530 9700 13 5610 0000 0000 0000 0				General Fund/EXPENDITURES/GENERAL SUPPORTIVE SERV		186.18	
			ZL-080421	GoDaddy Domain Renewal	2600001532	65.80	
10 E 530 0100 32 5650 0000 0000 0000 0				General Fund/EXPENDITURES/BASIC EDUCATION		65.80	
			ZL-082121	MICROSOFT LICENSE	1000010222	21.52	
10 L 630 0000 00 0000 0000 0000 0000				General Fund/DUE TO OTHER GOVERNMENT UNITS		-1.64	

Check Nbr	Vendor Name	Check Date	Invoice Number	Invoice Desc	PO Number	Invoice Amount	Check Amount
10 E 530 0100 32 7350 0000 0000 0000 0				General Fund/EXPENDITURES/BASIC EDUCATION		23.16	
120257	FREEMAN HIGH SCHOOL	09/15/2021	082021	Volleyball Rip-a-Shot Tournament Entry Fee 2021	1000010266	150.00	150.00
10 E 530 0100 28 7810 4300 0000 0000 1				General Fund/EXPENDITURES/BASIC EDUCATION		150.00	
120258	HERGESHEIMER, PAMELA S	09/15/2021	090721	REIMBURSE FOR SCHOOL NUTRITION ASSOCIATION MEMBERSHIP	0	46.00	46.00
10 E 530 9800 44 7810 0000 0000 0000 0				General Fund/EXPENDITURES/FOOD SERVICES		46.00	
120259	NEWESD 101	09/15/2021	1222102002	THREAT ASSESSMENT COOP FEES	1000010268	709.32	13,987.45
10 E 530 9700 11 7810 0000 0000 0000 0				General Fund/EXPENDITURES/GENERAL SUPPORTIVE SERV		709.32	
			1222102092	LOBBYIST AND LEGISLATIVE CONSULTANT - JULY 2021 TO JUNE 2022-1st Qtr	1000010232	392.40	
10 E 530 9700 11 7340 0000 0000 0000 0				General Fund/EXPENDITURES/GENERAL SUPPORTIVE SERV		392.40	
			1222102137	FEES & SCIENCE	1000010234	12,885.73	
10 E 530 0100 32 7352 0000 0000 0000 0				General Fund/EXPENDITURES/BASIC EDUCATION		210.00	
10 E 530 0100 33 5610 1100 0000 0000 0				General Fund/EXPENDITURES/BASIC EDUCATION		2,475.00	
10 E 530 0100 33 5610 4300 0000 0000 0				General Fund/EXPENDITURES/BASIC EDUCATION		618.75	
10 E 530 3100 27 7810 4300 0000 0000 0				General Fund/EXPENDITURES/VOCATIONAL		125.00	
10 E 530 9700 72 7591 0000 0000 0000 0				General Fund/EXPENDITURES/GENERAL SUPPORTIVE SERV		9,456.98	
120260	OFFICE DEPOT	09/15/2021	188345180001	CLASSROOM SUPPLIES	1300007520	226.74	1,499.89
10 E 530 0100 27 5610 4300 3400 0000 0				General Fund/EXPENDITURES/BASIC EDUCATION		226.74	
			188743323001	CLASSROOM SUPPLIES	1300007519	6.12	
10 E 530 2100 27 5610 4300 0000 0000 0				General Fund/EXPENDITURES/SPED STATE		6.12	
			188759424001	CLASSROOM SUPPLIES	1300007519	111.82	
10 E 530 2100 27 5610 4300 0000 0000 0				General Fund/EXPENDITURES/SPED STATE		111.82	
			188759424002	CLASSROOM SUPPLIES	1300007519	32.23	
10 E 530 2100 27 5610 4300 0000 0000 0				General Fund/EXPENDITURES/SPED STATE		32.23	
			188759425001	CLASSROOM SUPPLIES	1300007519	19.31	

Check Nbr	Vendor Name	Check Date	Invoice Number	Invoice Desc	PO Number	Invoice Amount	Check Amount
10 E 530 2100 27 5610 4300 0000 0000 0				General Fund/EXPENDITURES/SPED STATE		19.31	
			188769273001	TONER	1300007514	149.53	
10 E 530 0100 27 5610 4300 3200 0000 0				General Fund/EXPENDITURES/BASIC EDUCATION		149.53	
			188788626001	CLASSROOM SUPPLIES	1300007518	208.89	
10 E 530 0100 27 5610 4300 4000 0000 0				General Fund/EXPENDITURES/BASIC EDUCATION		208.89	
			188991838001	CLASSROOM SUPPLIES	1300007516	96.55	
10 E 530 0100 27 5610 4300 4000 0000 0				General Fund/EXPENDITURES/BASIC EDUCATION		96.55	
			188991838002	CLASSROOM SUPPLIES	1300007516	21.08	
10 E 530 0100 27 5610 4300 4000 0000 0				General Fund/EXPENDITURES/BASIC EDUCATION		21.08	
			188991838003	CLASSROOM SUPPLIES	1300007516	17.61	
10 E 530 0100 27 5610 4300 4000 0000 0				General Fund/EXPENDITURES/BASIC EDUCATION		17.61	
			188991838004	CLASSROOM SUPPLIES	1300007516	10.54	
10 E 530 0100 27 5610 4300 4000 0000 0				General Fund/EXPENDITURES/BASIC EDUCATION		10.54	
			189199862001	CLASSROOM SUPPLIES	1300007516	38.29	
10 E 530 0100 27 5610 4300 4000 0000 0				General Fund/EXPENDITURES/BASIC EDUCATION		38.29	
			189318917001	CLASSROOM SUPPLIES	1300007513	158.75	
10 E 530 0100 27 5610 4300 1840 0000 0				General Fund/EXPENDITURES/BASIC EDUCATION		158.75	
			189323821001	CLASSROOM SUPPLIES	1300007513	23.49	
10 E 530 0100 27 5610 4300 1840 0000 0				General Fund/EXPENDITURES/BASIC EDUCATION		23.49	
			189335310001	CLASSROOM SUPPLIES	1300007512	218.74	
10 E 530 0100 27 5610 4300 1840 0000 0				General Fund/EXPENDITURES/BASIC EDUCATION		218.74	
			189335310002	CLASSROOM SUPPLIES	1300007512	24.09	
10 E 530 0100 27 5610 4300 1840 0000 0				General Fund/EXPENDITURES/BASIC EDUCATION		24.09	
			189447047001	CLASSROOM SUPPLIES	1300007522	123.61	
10 E 530 0100 27 5610 4300 4040 0000 0				General Fund/EXPENDITURES/BASIC EDUCATION		123.61	
			189447047002	CLASSROOM	1300007522	12.50	

Check Nbr	Vendor Name	Check Date	Invoice Number	Invoice Desc	PO Number	Invoice Amount	Check Amount
				SUPPLIES			
10 E 530 0100 27 5610 4300 4040 0000 0				General Fund/EXPENDITURES/BASIC EDUCATION		12.50	
120261	OXARC INC	09/15/2021	60985116	Argon and Stargon gas	1000010236	14.02	14.02
10 E 530 3100 27 5610 4300 2400 0000 0				General Fund/EXPENDITURES/VOCATIONAL		14.02	
120262	PATRIOT FIRE PROTECTION INC	09/15/2021	2318830	Patriot Fire Protection Annual Inspection	2300006308	839.28	839.28
10 E 530 9700 64 7340 0000 0000 0000 0				General Fund/EXPENDITURES/GENERAL SUPPORTIVE SERV		839.28	
120263	PERRINS, JASON	09/15/2021	091021	REIMBURSE FOR COLLEGE COURSES AT CITY UNIVERSITY SEATTLE	0	1,000.00	1,000.00
10 E 530 9700 12 7330 0000 0000 0000 0				General Fund/EXPENDITURES/GENERAL SUPPORTIVE SERV		1,000.00	
120264	RENAISSANCE LEARNING INC	09/15/2021	INV5226354	Accelerated Reader and STAR 360 Subscriptions and Renaissance Platform Fees	1000010200	15,938.78	15,938.78
10 E 530 5100 27 5650 1100 0000 0000 0				General Fund/EXPENDITURES/TITLE I		7,892.46	
10 E 530 5100 27 5650 4300 0000 0000 0				General Fund/EXPENDITURES/TITLE I		8,046.32	
120265	SCHOOL DATA SOLUTIONS	09/15/2021	102351	School Data School management systems 7/1/21 to 6/30/22	1400007638	9,770.08	9,770.08
10 E 530 0200 32 5650 5400 0000 0000 0				General Fund/EXPENDITURES/ALTERNATIVE BASIC ED		9,770.08	
120266	STUMPF SEED AND FERTILIZER	09/15/2021	792126	Stumpf Seed and Fertilizer	2300006350	845.74	845.74
10 E 530 9700 62 5610 0000 0000 0000 0				General Fund/EXPENDITURES/GENERAL SUPPORTIVE SERV		845.74	
120267	TERRYS DAIRY	09/15/2021	083121	DAIRY FOR CUST #1513	1000010249	254.10	254.10
10 E 530 9800 42 5630 0000 0000 0000 0				General Fund/EXPENDITURES/FOOD SERVICES		254.10	
120268	TILLA, KALLIE J	09/15/2021	090221	REIMBURSE FOR AMAZON CLASSROOM SUPPLIES	0	58.08	58.08
10 E 530 0100 27 5610 1100 0000 0000 0				General Fund/EXPENDITURES/BASIC EDUCATION		58.08	
120269	ULINE	09/15/2021	137947378	Laminated Storage Cabinet Easy-Adjust Desktop Monitor	1400007645	790.80	790.80

Check Nbr	Vendor Name	Check Date	Invoice Number	Invoice Desc	PO Number	Invoice Amount	Check Amount
10 E 530 0200 27 5610 5400 0000 0000 0				mount General Fund/EXPENDITURES/ALTERNATIVE BASIC ED		790.80	
120270	US FOODS	09/15/2021	090221	FOOD SERVICE SUPPLIES CUSTOMER #9018139	1000010250	3,861.68	3,861.68
10 E 530 9800 42 5630 0000 0000 0000 0				General Fund/EXPENDITURES/FOOD SERVICES		3,578.35	
10 E 530 9800 44 5610 0000 0000 0000 0				General Fund/EXPENDITURES/FOOD SERVICES		283.33	
120271	WSIPC	09/15/2021	1002100032	Skyward API for Canvas-to assist student learning during remote instruction for COVID outbreaks 09-2021 TO 08-2022	1300007527	940.00	940.00
10 E 530 1200 32 5650 4300 0000 0000 0				General Fund/EXPENDITURES/Fed Stim - School Improve		940.00	
120272	WSIPC DBA WASWUG ANNUAL CONFER	09/15/2021	WF2021-072021-0639	WASWUG FALL 2021 3 DAYS W/ PRE CONFERENCE-"LIVE WITH INTENTION" for RENEE WHITLEY	1300007487	275.00	275.00
10 E 530 0100 31 7330 4300 0000 0000 0				General Fund/EXPENDITURES/BASIC EDUCATION		275.00	
120273	YCC INTERNATIONAL CORPORATION	09/15/2021	WWS210351	GLOVES AND MASKS FOR STUDENTS AND STAFF DURING COVID-ESSER II	1000010263	1,571.51	1,571.51
10 E 530 1200 26 5610 0000 0000 0000 0				General Fund/EXPENDITURES/Fed Stim - School Improve		1,571.51	
120274	ARBITER SPORTS	09/15/2021	00661869	Game Subscription	8300006777	350.00	350.00
40 E 530 2010 00 0000 2200 0000 0000 0				Associated Student Body Fund/EXPENDITURES/ATHLETIC GENE		350.00	
120275	FAMILY ID INC	09/15/2021	INV37184	FAMILY ID SUBSCRIPTION 2021-22	8300006780	1,877.63	1,877.63
40 E 530 2010 00 0000 4300 0000 0000 0				Associated Student Body Fund/EXPENDITURES/ATHLETIC GENE		1,877.63	
120276	WIAA	09/15/2021	41743	WIAA MEMBERSHIP FEE FALL AD WORKSHOP FEE WRESTLING WEIGHT MGMT FEE	8300006779	1,175.00	1,275.00
40 E 530 2010 00 0000 4300 0000 0000 0				Associated Student Body Fund/EXPENDITURES/ATHLETIC GENE		1,175.00	
			42153	WIAA MEMBERSHIP ANNUAL FEE	8300006781	100.00	
40 E 530 2010 00 0000 2200 0000 0000 0				Associated Student Body Fund/EXPENDITURES/ATHLETIC GENE		100.00	

Check Nbr	Vendor Name	Check Date	Invoice Number	Invoice Desc	PO Number	Invoice Amount	Check Amount
				27 Computer	Check(s) For a Total of		59,365.51

Check Summary

	0	Manual	Checks For a Total of	0.00
	0	Wire Transfer	Checks For a Total of	0.00
	0	ACH	Checks For a Total of	0.00
	27	Computer	Checks For a Total of	59,365.51
Total For	27	Manual, Wire Tran, ACH & Computer Checks		59,365.51
Less	0	Voided	Checks For a Total of	0.00
			Net Amount	59,365.51

FUND SUMMARY

Fund	Description	Balance Sheet	Revenue	Expense	Total
10	General Fund	-1.64	0.00	55,864.52	55,862.88
40	Associated Student Body Fund	0.00	0.00	3,502.63	3,502.63



The following vouchers, as audited and certified by the Auditing Officer as required by RCW 42.24.080, and those expense reimbursement claims certified as required by RCW 42.24.090, are approved for payment. Those payments have been recorded on this listing which has been made available to the board.

As of October 20, 2021, the board, by a \_\_\_\_\_ vote, approves payments, totaling \$23,318.93. The payments are further identified in this document.

Total by Payment Type for Cash Account, County Treasurer Warrants:  
Warrant Numbers 120236 through 120249, totaling \$23,318.93

Secretary \_\_\_\_\_ Board Member \_\_\_\_\_  
Board Member \_\_\_\_\_ Board Member \_\_\_\_\_  
Board Member \_\_\_\_\_ Board Member \_\_\_\_\_

Check Nbr	Vendor Name	Check Date	Invoice Number	Invoice Desc	PO Number	Invoice Amount	Check Amount
120236	A-L COMPRESSED GASES INC	09/15/2021	333562	OPEN PO FOR SUPPLIES	1000010258	68.86	68.86
10 E 530 3100 27 5610 4300 2400 0000 0				General Fund/EXPENDITURES/VOCATIONAL		68.86	
120237	CHEWELAH ASSOC PHYSICIANS	09/15/2021	2553-081721	DRIVER PHYSICALS ACCT #2553	1000010217	440.00	440.00
10 E 530 9900 52 7340 0000 0000 0000 0				General Fund/EXPENDITURES/PUPIL TRANSPORTATION		440.00	
120238	CITY OF CHEWELAH	09/15/2021	083021	UTILITIES	1000010218	12,531.99	12,531.99
10 E 530 9700 65 7410 0000 0000 0000 0				General Fund/EXPENDITURES/GENERAL SUPPORTIVE SERV		1,609.12	
10 E 530 9700 65 7420 0000 0000 0000 0				General Fund/EXPENDITURES/GENERAL SUPPORTIVE SERV		93.85	
10 E 530 9700 65 7622 0000 0000 0000 0				General Fund/EXPENDITURES/GENERAL SUPPORTIVE SERV		506.61	
10 E 530 9700 65 7410 1100 0000 0000 0				General Fund/EXPENDITURES/GENERAL SUPPORTIVE SERV		1,644.89	
10 E 530 9700 65 7420 1100 0000 0000 0				General Fund/EXPENDITURES/GENERAL SUPPORTIVE SERV		296.05	
10 E 530 9700 65 7622 1100 0000 0000 0				General Fund/EXPENDITURES/GENERAL SUPPORTIVE SERV		2,343.72	
10 E 530 9700 65 7410 2200 0000 0000 0				General Fund/EXPENDITURES/GENERAL SUPPORTIVE SERV		493.02	
10 E 530 9700 65 7622 2200 0000 0000 0				General Fund/EXPENDITURES/GENERAL SUPPORTIVE SERV		515.46	
10 E 530 9700 65 7410 4300 0000 0000 0				General Fund/EXPENDITURES/GENERAL SUPPORTIVE SERV		1,233.83	
10 E 530 9700 65 7420 4300 0000 0000 0				General Fund/EXPENDITURES/GENERAL SUPPORTIVE SERV		267.00	
10 E 530 9700 65 7622 4300 0000 0000 0				General Fund/EXPENDITURES/GENERAL SUPPORTIVE SERV		3,028.74	
10 E 530 9700 65 7410 5400 0000 0000 0				General Fund/EXPENDITURES/GENERAL SUPPORTIVE SERV		108.95	
10 E 530 9700 65 7420 5400 0000 0000 0				General Fund/EXPENDITURES/GENERAL SUPPORTIVE SERV		181.95	
10 E 530 9700 65 7622 5400 0000 0000 0				General Fund/EXPENDITURES/GENERAL SUPPORTIVE SERV		208.80	
120239	ELAN CARDMEMBER SERVICE	09/15/2021	JP-080321	Rusty Putter-lunch for CEA negotiations 8-3-21	1000010186	133.48	1,667.59
10 E 530 9700 12 5610 0000 0000 0000 0				General Fund/EXPENDITURES/GENERAL SUPPORTIVE SERV		133.48	
			JP-080521	RUSTY PUTTER-CEA NEGOTIATION LUNCH 8-5-21	1000010188	67.79	

Check Nbr	Vendor Name	Check Date	Invoice Number	Invoice Desc	PO Number	Invoice Amount	Check Amount
10 E 530 9700 12 5610 0000 0000 0000 0				General Fund/EXPENDITURES/GENERAL SUPPORTIVE SERV		67.79	
			JT-080221	Home depot (Chop Saw)	2300006327	1,047.30	
10 E 530 9700 64 5610 0000 0000 0000 0				General Fund/EXPENDITURES/GENERAL SUPPORTIVE SERV		1,047.30	
			JT-081221	Staples (Planner)	2300006328	44.67	
10 E 530 9700 64 5610 0000 0000 0000 0				General Fund/EXPENDITURES/GENERAL SUPPORTIVE SERV		44.67	
			MS-081221	Years of service keychains	1000010193	124.35	
10 L 630 0000 00 0000 0000 0000 0000				General Fund/DUE TO OTHER GOVERNMENT UNITS		-9.45	
10 E 530 9700 12 5610 0000 0000 0000 0				General Fund/EXPENDITURES/GENERAL SUPPORTIVE SERV		133.80	
			MS-082321	SCHOOL SPRING.COM - JOB POSTING FOR ASSISTANT PRINCIPAL FOR 60 DAYS	1000010205	250.00	
10 E 530 9700 14 7540 0000 0000 0000 0				General Fund/EXPENDITURES/GENERAL SUPPORTIVE SERV		250.00	
120240	H & H INC	09/15/2021	090321	COPIER MONTHLY USAGE CHARGES	1000010225	419.09	419.09
10 E 530 0100 23 7340 1100 0000 0000 0				General Fund/EXPENDITURES/BASIC EDUCATION		104.90	
10 E 530 0100 23 7340 4300 0000 0000 0				General Fund/EXPENDITURES/BASIC EDUCATION		147.77	
10 E 530 9700 13 7340 0000 0000 0000 0				General Fund/EXPENDITURES/GENERAL SUPPORTIVE SERV		140.31	
10 E 530 0200 23 7340 5400 0000 0000 0				General Fund/EXPENDITURES/ALTERNATIVE BASIC ED		26.11	
120241	JMT PETROLEUM	09/15/2021	98845	FUEL ACCT	1000010229	1,152.37	1,152.37
10 E 530 9700 62 5626 0000 0000 0000 0				General Fund/EXPENDITURES/GENERAL SUPPORTIVE SERV		356.52	
10 E 530 9700 75 5626 0000 0000 0000 0				General Fund/EXPENDITURES/GENERAL SUPPORTIVE SERV		237.46	
10 E 530 9900 52 5626 0000 0000 0000 0				General Fund/EXPENDITURES/PUPIL TRANSPORTATION		558.39	
120242	NAPA AUTO PARTS	09/15/2021	083121	TRANSPORTATION SUPPLIES ACCT #16420840	1000010231	230.99	230.99
10 E 530 9700 75 5610 0000 0000 0000 0				General Fund/EXPENDITURES/GENERAL SUPPORTIVE SERV		40.03	
10 E 530 9900 53 5610 0000 0000 0000 0				General Fund/EXPENDITURES/PUPIL TRANSPORTATION		190.96	
120243	NEWESD 101	09/15/2021	1212002211	PARAEDUCATOR TRAINING FRO ADLESERGER AND OFFERDAHL 8-16, 8-17, 8-20-2021	1000010204	80.00	80.00
10 E 530 5866 31 7330 0000 0000 0000 0				General Fund/EXPENDITURES/PARA PROFESSIONAL DEV		80.00	
120244	QUILL CORPORATION	09/15/2021	17555243	23-5610 Office supplies Pencils Pens Black and Blue Fine point	1400007610	236.85	1,300.98

Check Nbr	Vendor Name	Check Date	Invoice Number	Invoice Desc	PO Number	Invoice Amount	Check Amount
10 E 530 0200 23 5610 5400 0000 0000 0				Black Labels for Book shark and mailing File Folders High Lighters 4x4 sticky notes Business envelopes and 9x12's Tape dispenser and staplers, scissors (2) each 1 swingline line for annex building Febreeze, lysol wipes, Swiffer dusters and refill		236.85	
			General Fund/EXPENDITURES/ALTERNATIVE BASIC ED				
			17560322	23-5610 Office supplies Pencils Pens Black and Blue Fine point Black Labels for Book shark and mailing File Folders High Lighters 4x4 sticky notes Business envelopes and 9x12's Tape dispenser and staplers, scissors (2) each 1 swingline line for annex building Febreeze, lysol wipes, Swiffer dusters and refill	1400007610	9.60	
10 E 530 0200 23 5610 5400 0000 0000 0						9.60	
			General Fund/EXPENDITURES/ALTERNATIVE BASIC ED				
			17651248	supplies	1100007641	857.63	
10 E 530 0100 27 5610 1100 0000 0000 0						857.63	
			General Fund/EXPENDITURES/BASIC EDUCATION				
			17652094	supplies	1100007641	196.90	

Check Nbr	Vendor Name	Check Date	Invoice Number	Invoice Desc	PO Number	Invoice Amount	Check Amount
10 E 530 0100 27 5610 1100 0000 0000 0				General Fund/EXPENDITURES/BASIC EDUCATION		196.90	
120245	ROCKIE HANSEN PLLC	09/15/2021	070721	LEGAL SERVICES FOR JUNE & JULY 2021	1000010241	166.50	166.50
10 E 530 9700 11 7341 0000 0000 0000 0				General Fund/EXPENDITURES/GENERAL SUPPORTIVE SERV		166.50	
120246	SETYS ACE HARDWARE	09/15/2021	083121	PURCHASES OPEN PO ACCT #101365	1000010247	2,619.41	2,619.41
10 E 530 9700 62 5610 0000 0000 0000 0				General Fund/EXPENDITURES/GENERAL SUPPORTIVE SERV		1,071.70	
10 E 530 9700 63 5610 1100 0000 0000 0				General Fund/EXPENDITURES/GENERAL SUPPORTIVE SERV		459.84	
10 E 530 9700 63 5610 4300 0000 0000 0				General Fund/EXPENDITURES/GENERAL SUPPORTIVE SERV		84.49	
10 E 530 9700 64 5610 0000 0000 0000 0				General Fund/EXPENDITURES/GENERAL SUPPORTIVE SERV		799.79	
10 E 530 9900 53 5610 0000 0000 0000 0				General Fund/EXPENDITURES/PUPIL TRANSPORTATION		203.59	
120247	SPOKANE FALLS COMMUNITY COLLEG	09/15/2021	WA172TPC00002335	COLLEGE IN THE HIGH SCHOOL TUITION 2020-2021 SPRING	1000010106	2,500.00	2,500.00
10 E 530 5806 27 7565 4300 1530 0000 0				General Fund/EXPENDITURES/COLLEGE IN THE HIGH SCHOOL		2,500.00	
120248	TERRYS DAIRY	09/15/2021	083121B	DAIRY FOR CUST #1513	1000010249	128.15	128.15
10 E 530 9801 42 5630 0000 0000 0000 0				General Fund/EXPENDITURES/SUMMER FOOD		128.15	
120249	WA STATE DEPT OF LICENSING	09/15/2021	L0147199362	Driver Abstracts	1000010253	13.00	13.00
10 E 530 9900 52 7340 0000 0000 0000 0				General Fund/EXPENDITURES/PUPIL TRANSPORTATION		13.00	
14 Computer						Check(s) For a Total of	23,318.93

0	Manual	Checks For a Total of	0.00
0	Wire Transfer	Checks For a Total of	0.00
0	ACH	Checks For a Total of	0.00
14	Computer	Checks For a Total of	23,318.93
Total For	14	Manual, Wire Tran, ACH & Computer Checks	23,318.93
Less	0	Voided	0.00
		Net Amount	23,318.93

FUND SUMMARY

Fund	Description	Balance Sheet	Revenue	Expense	Total
10	General Fund	-9.45	0.00	23,328.38	23,318.93

**Chewelah School District #36  
Substitute Teacher Wage Schedule**

Base Index = WA Full Daily State Rate for 2021-2022							\$ 151.86
Experience increment increase equals:							
* Unrepresented		Base substitute wage (7 hrs)	Base substitute wage (3.5 hrs)	Starting on 21st day of consecutive assignment (7 hrs)	Starting on 21st day of consecutive assignment (3.5 hrs)		
		92%	92%				
		\$140.00	\$70.00	Place on certificated salary schedule			
	Hourly	\$20.00	\$20.00				
<b>Board Approval:</b> _____							

## STUDENT DISCIPLINE

### Introduction/Philosophy/Purpose

The Board of the Chewelah School District focuses on the educational achievement of each and every student. The District holds high expectations for all students and gives all students the opportunity to achieve personal and academic success. "Discipline" means any action taken by the School District in response to behavioral violations, including exclusionary as well as. Discipline is not necessarily punitive but can take positive and supportive forms of discipline. The Board intends Data show that this policy and procedure be implemented in a manner that supports positive school climate, maximizes instructional time, supportive response to behavioral violation is more effective and increases equitable educational opportunities.

**Commented [KG1]:** Replace "gives" with "provides"?

**Commented [KG2]:** Replace "opportunity" with "teaching and guidance"?

The purposes of this policy and accompanying procedure include:

- Engaging with school personnel, students, parents, families, and the community in decisions related and striving to the development and implementation of discipline policies and procedures; understand and be responsive to cultural context
- Supporting students in meeting behavioral expectations, including providing for early involvement of parents and families;
- Administering discipline in ways that respond to the needs and strengths of students and keep students in the classroom to the maximum extent possible;
- Providing educational services that students need to complete their education without disruption; during suspension and expulsion
- Facilitating collaboration between school personnel, students, and parents, and families to support thereby supporting successful reentry into the classroom following a suspension or expulsion;
- Ensuring fairness, equity, and due process in the administration of discipline;
- Implementing culturally responsive discipline that provides Providing every student with the opportunity to achieve personal and academic success;
- Providing a safe environment for all students and for district employees;

**Commented [KG3]:** Change "opportunity"? Add "guidance"?

### Rights and Responsibilities/District Commitment

The Board recognizes the negative and disproportionate impact make available rules of exclusionary discipline practices and is committed to:

- Identifying and addressing discipline policies and practices that perpetuate educational opportunity gaps;
- Proactively implementing discipline practices that support students in meeting behavioral expectations without losing access to instruction;

The District will observe students' fundamental rights and will administer discipline in a manner that does not:

1. Unlawfully discriminate against a student on the basis of sex, race, creed, religion, color, national origin, sexual orientation, gender expression, gender identity, disability, or the use of a trained dog guide or service animal;
2. Deprive a student of the student's constitutional right to freedom of speech and press, the constitutional right to peaceably assemble and to petition the government and its representatives for a redress of grievances, the constitutional right to the free exercise of

- religion and to have the student's school free from sectarian control or influence, subject to reasonable limitations upon the time, place, and manner of exercising the right;
3. Deprive a student of the student's constitutional right to be secure in the student's person, papers, and effects against unreasonable searches and seizures;
  4. Unlawfully interfere in a student's pursuit of an education while in the custody of the School District; or
  5. Deprive a student of the student's right to an equal educational opportunity, in whole or in part, by a school district without due process of law.

This District's student discipline policy and procedure is ~~conducted~~, designed to provide students with a safe, healthy, and educationally sound environment. Students are expected to be aware of and comply with this policy and procedure ~~the district's rules of student conduct, including behavioral expectations~~ ~~behavior standards~~ that respect the rights, person, and property of others. Students are also expected to pursue the required course of studies. Students and staff are expected to work together to develop a positive climate for learning, consistent with Board Policy 3122.

#### **Minimizing exclusion, engaging with families, and supporting students**

~~Unless a student's presence poses an immediate and continuing danger to others or an immediate and continuing threat to the educational process, staff members must first attempt one or more forms of other forms of discipline to support students in meeting behavioral expectations before imposing classroom exclusion, short-term suspension, or in-school suspension. Before imposing a long-term suspension or expulsion, the district must first consider other forms of discipline.~~

~~These other forms of discipline may involve the use of best practices and strategies included in the state menu for behavior developed under RCW 28A.165.035. The accompanying procedure will identify a list of other forms of discipline for staff use. However, staff members are not restricted to that list and may use any other form of discipline compliant with WAC 392-400-025(9).~~

~~School personnel must make every reasonable attempt to involve parents and students to resolve behavioral violations. The district must ensure that associated notices, hearings, conferences, meetings, plans, proceedings, agreements, petitions, and decisions are in a language the student and parents understand; this may require language assistance. Language assistance includes oral and written communication and further includes assistance to understand written communication, even if parents cannot read any language. The district's use of suspension and expulsion will have a real and substantial relationship to the lawful maintenance and operation of the school district, including but not limited to, the preservation of the health and safety of students and employees and the preservation of an educational process that is conducive to learning.~~

~~As described in the procedures, the district will offer educational services to students during suspension or expulsion. When the district administers a long-term suspension or expulsion, the district will timely hold a reengagement meeting and collaborate with parents and students to develop a reengagement plan that is tailored to the student's individual circumstances, in order to~~



return the student to school successfully. Additionally, any student who has been suspended or expelled may apply for readmission at any time.

#### **Staff authority**

District staff members are responsible for supervising students during the school day, during school activities, whether on or off campus, and on the school bus. Staff members will seek early involvement of parents in efforts to support students in meeting behavioral expectations. The Superintendent has general authority to administer discipline, including all exclusionary discipline. The Superintendent will identify other staff members to whom the Superintendent has designated disciplinary authority. After attempting at least one other form of discipline, teachers have statutory authority to impose classroom exclusion for behaviors that disrupt the educational process. Because perceptions of subjective behaviors vary and include implicit or unconscious bias, the accompanying procedures will seek to identify the types of behaviors for which the identified district staff may administer discipline.

#### **Ensuring fairness, providing notice, and an opportunity for a hearing**

When administering discipline, the district will observe all of the student's constitutional rights. The district will notify parents as soon as reasonably possible about classroom exclusion and before administering any suspension or expulsion. The district will provide opportunities for parent participation during an initial hearing with the student. The district will provide parents with written notice, consistent with WAC 392-400-455, of a suspension or expulsion no later than one school business day following the initial hearing. As stated above, language assistance includes oral and written communication and further includes assistance to understand written communication, even if parents cannot read any language. The district has established procedures for review and appeal of suspensions, expulsions, and emergency expulsions, consistent with WAC 392-400-430 through 392-400-530.

The district has also established procedures to address grievances of parents or students related to other forms of discipline, classroom exclusion, and exclusion from transportation or extra-curricular activity. The grievance procedures include an opportunity for the student to share his or her perspective and explanation regarding the behavioral violation.

#### **Development and review**

Accurate and complete reporting of all disciplinary actions, including the associated student-level information, behavioral violations, and other forms of discipline the District considered or attempted that led to them, is essential for effective review of this policy; therefore, the District will ensure such reporting.

The District will periodically collect and review data on disciplinary actions administered taken against students in each school. The data will be disaggregated into subgroups as required by RCW 28A.300.042, and any additional data required under other district policies and procedures.

The District will ensure that 28A.300.042, including students who qualify for special education or Section 504. The data review will include classroom exclusion, in-school principals confer with certificated building employees at least annually to develop and short-term suspensions, and/or review building discipline standards long-term suspensions and review the fidelity of implementation of those standards. At each district school, principals and certificated staff will

develop written school procedures for administering discipline at their school with the participation of other expulsions. The district will invite school personnel, students, parents, families, and the community. Each school will:

1. Establish behavioral expectations with students and proactively teach expectations across various school settings.
2. Develop precise definitions for problem behaviors and behavioral violations to address differences participate in perception the data review. The purpose of subjective behaviors and reduce the effect of implicit bias.
3. Define the differences between minor and major behavior incidents data review is to clarify determine if disproportionality exists; if disproportionality is found, the types of behaviors district will take action to ensure that may or may it is not the result in classroom exclusion or are severe enough that an administrator needs to be involved.
4. Identify a continuum of best practices and strategies for classroom-based responses that building staff should administer before or instead of classroom exclusion to support students in meeting behavioral expectations.

Schools' handbooks, codes of conduct, and building discipline standards must not conflict with this policy, accompanying procedures, or other Board policies. A school's building discipline standards must be annually approved by the District Director of Student Services.

School principals will ensure teachers and other school personnel receive adequate support to effectively implement a continuum of identified best practices and strategies that:

1. Focus on prevention to reduce the use of exclusionary discipline practices;
2. Allow the exercise of professional judgment and skill sets; and
3. May be adapted to individual student needs in a culturally responsive manner.

School principals will confer with certificated building employees at least annually to establish criteria for when certificated employees must complete classes to improve classroom management skills.

The District will periodically review and further develop of discrimination and may update this policy and procedure with the participation of school personnel, students, parents, families, and the community. As part of this development and review process, the District will use disaggregated data collected under RCW 28A.300.042 to monitor the impact of student discipline practices as well as to improve fairness and equity in the administration of student regarding discipline. Discipline data must be disaggregated by:

1. School.
2. Student groups, including by gender, grade level, race/ethnicity (including further disaggregation of federal race and ethnicity categories in accordance with RCW 28A.300.042(1) and CEDARS Appendices Y and Z), low-income, English language learner, migrant, special education, Section 504, foster care, and homeless.
3. Behavioral violation.
4. Discipline types, including classroom exclusion, in-school suspension, short-term suspension, long-term suspension, emergency expulsion, and expulsion.

Policy 3241  
Students

The District will follow the practices outlined in guidance from the Race and Ethnicity Student Data Task Force when disaggregating broader racial categories into subracial and subethnic categories. The District will consider student program status and demographic information (i.e. gender, grade-level, low-income, English language learner, migrant, special education, Section 504, foster care, and homeless) when disaggregating student race and ethnicity data to identify any within-group variation in school discipline experiences and outcomes of diverse student groups. This process may include reviewing data to prevent and address discrimination against students in protected classes identified in chapters 28A.640 and 28A.642 RCW, however, the District will ensure it reviews disaggregated discipline data in accordance with WAC 392-190-048 at least annually.

The District will support each school to:

- set at least one goal annually for improving equitable student outcomes;
- create an action plan or plans;
- evaluate previous goals and action plans; and
- revise goals and action plans, based on evaluations.

Schools will share identified goals and action plans with all staff, students, parents, families, and the community.

#### **Distribution of policies and procedures**

The school-District will make the current version of this policyits-discipline-policies and procedureprocedures available to families and the community. The District will annually provide this policyits-discipline-policies and procedureprocedures to all district personnel, students, and parents, and families, which may require language assistance for students and parents with limited-English proficiency under Title VI of the Civil Rights Act of 1964. The school-district will ensure district employees and contractors are knowledgeable of the discipline-policies and procedures.

The District will ensure district employees and contractors are knowledgeable of this student discipline policy and procedure. At the building level, schools will annually provide the current building discipline standards, developed as stated above, to all school personnel, students, parents, and families, which may require language assistance for students and parents with limited-English proficiency under Title VI of the Civil Rights Act of 1964. Schools will ensure all school personnel are knowledgeable of the school building discipline standards. Schools are encouraged to provide discipline training developed under RCW 28A.415.410 to support implementation of this policy and procedure to all school staff as feasible.

#### **Application**

This policy and accompanying procedure will be construed in a manner consistent with Washington law as stated in WAC 392-400-020.

Policy 3241  
Students

Cross References: 2121 - Substance Abuse Program  
2161 - Special Education and Related Services for Eligible Students  
2162 - Education of Students With Disabilities Under Section 504 of the Rehabilitation Act of 1973  
3122 - Excused and Unexcused Absences  
3200 - Rights and Responsibilities  
3210 - Nondiscrimination  
3244 - Prohibition of Corporal Punishment  
3520 - Student Fees, Fines, or Charges  
4210 - Regulation of Dangerous Weapons on School Premises  
4218 - Language Access Plan

Legal References:

RCW 9.41.280 Possessing dangerous weapons on school facilities — Penalty — Exceptions  
RCW 28A.150.240 Certificated teaching and administrative staff as accountable for classroom teaching — Scope — Responsibilities — Penalty  
Chapter 28A.225. RCW Compulsory school attendance and admission  
Chapter 28A.320. RCW Provisions applicable to all districts  
RCW 28A.400.100 Principals and vice principals — Employment of — Qualifications — Duties  
RCW 28A.400.110 Principal to assure appropriate student discipline — Building discipline standards — Classes to improve classroom management skills  
Chapter 28A.600 RCW. Students  
WAC 392-190-048 Access to course offerings — Student discipline  
Chapter 392-400 WAC. Student Discipline  
34 CFR Part 100.3 Regulations implementing Civil Rights Act of 1964  
42 U.S.C. 2000d et seq. Civil Rights Act of 1964

Management Resources: 2021 – February Issue  
2019 -- April April Policy Alert  
2018 - August Issue  
2016 - July 2010 – June Issue

Policy 3241  
Students

~~2014 - August Issue~~

~~2014 - December Issue~~

~~2014 - August 2016 - July Policy Issue~~

~~2010 - June 2018 - August 2018 - August Policy Issue~~

**Adoption Date: 06.19.19**  
**Chewelah School District #36**  
**Classification: Essential**  
**Revised Dates:**

## STUDENT LEARNING GOALS

~~A basic education is an evolving program. The goal of instruction that is intended the school district shall be to provide opportunities for all students with the opportunity to become responsible and respectful global citizens, to contribute to their economic well-being and that of their families and communities, to explore and understand different perspectives, and to enjoy productive and satisfying lives. With the involvement of parent and community members, the goal of the District is to provide opportunities for every each student to develop the specific academic and technical skills and knowledge and skills essential to:~~  
~~meeting four student learning goals:~~

- ~~1. Read with comprehension, write effectively, and communicate successfully in a variety of ways and settings and with a variety of audiences;~~
- ~~2. Know and apply the core concepts and principles of mathematics; social, physical, and life sciences; civics and history, including different cultures and participation in representative government; geography; arts; and health and fitness;~~
- ~~3. Think analytically, logically, and creatively, and to integrate technology literacy and fluency as well as different experiences and knowledge to form reasoned judgments and solve problems; and~~
- ~~4. Understand the importance of work and finance and how performance, effort, and decisions directly affect future career and educational opportunities.~~

These goals will be placed within a context of a performance-based educational system in which high standards are set for all students. Parents are primary partners in the education of their children, and students take responsibility for their learning. How instruction is provided to meet these learning goals is the decision of the School Board and district educators. An assessment system for determining if students have successfully learned the essential academic learning requirements based on the student learning goals ~~will shall~~ be adopted by the District, as required by the state law ~~board of education implements these assessments.~~

Legal References:      RCW 28A.150.210      Basic Education Act — Goal  
                                 RCW 28A.655.010      Washington commission on Student Learning — Definitions

Management Resources: *Policy News*, October 2007      Basic Education Act Revisions

Adoption Date: 01.16.08  
Chewelah School District #36  
Revised: 05.20.09  
Classification: ~~Priority~~ Encouraged

Commented [KG1]: Remove "A"?

Commented [KG2]: Replace "evolving" with "continuously improving"?

Commented [KG3]: Remove "that is intended"?

Commented [KG4]: Replace "to provide" with "provides"?

Commented [KG5]: Do not strike out "all"?

Commented [KG6]: Replace "opportunity"?

## ACCOUNTABILITY GOALS

### A. High School Graduation Rate Goals

The board shall annually adopt district-wide graduation goals and direct each high school to annually establish goals, subject to board approval, to increase the percentage of on-time graduates receiving a high school diploma beginning with the class of 2004.

The minimum graduation rate goals through 2013 shall be as defined in WAC 180-105-060. Graduation rate goals in 2014 and each year thereafter for each group of students, identified in Federal requirements, shall not be less than 85 percent.

### B. District and School Reading and Mathematics Improvement Goals

The board shall adopt district-wide performance improvement goals for reading and mathematics in grades four, seven, and ten; and direct each school in the district that administers the Washington Assessment of Student Learning to adopt performance improvement goals to increase the percentage of students meeting the standard in fourth, seventh and tenth grade reading and mathematics.

The following goals and calculation methodologies shall be established to measure and improve student achievement in reading and mathematics in fourth, seventh and tenth grades as measured by the Washington Assessment of Student Learning administered in the spring of 2003 through and including the spring of 2013.

1. The baseline of achievement for the district and schools on the fourth, seventh, and tenth grade reading and mathematics assessments are the starting points established using the federal requirements in the Washington State No Child Left Behind (NCLB) Accountability Plan.
2. The goal for the district and for each school is to increase the percentage of students in the following categories in meeting or exceeding the reading and mathematics improvement goals on the state uniform bar as established using the federal requirements in the Washington State No Child Left Behind (NCLB) Accountability Plan:
  - a. All students;
  - b. Students of each major racial and ethnic group;
  - c. Economically disadvantaged students;
  - d. Students with disabilities; and
  - e. Students with limited English proficiency.
3. The district and all schools shall demonstrate satisfactory progress toward the performance improvement goals by meeting the federal requirements or by showing improvements using the alternative "Safe Harbor" calculation.

Once a year the board shall issue a report to parents and present it in a public meeting. The report shall include the following:

- A. The district's and buildings' improvement goals.
- B. Student performance relative to the goals.

~~C. District and building plans to achieve the goals, including curriculum and instruction, parent and guardian involvement, and resources available to parents and guardians to assist students in meeting the state standards.~~

**Adopting Performance Improvement Goals**

Annually, the Board will do the following:

1. Adopt district-wide performance improvement goals for the measures included in the Washington school improvement framework.
2. Direct each school in the district that enrolls students in grades three through eight and/or high school to establish goals to increase the measures included in the Washington school improvement framework consistent with state and district goals.

The District and each school in the District will establish English language arts and mathematics improvement goals using the requirements of the Elementary and Secondary Education Act (the "ESEA") to determine the increase in requirements described above for all students and for each of the groups required by the ESEA.

The District and each school will establish annual performance improvement goals in accordance with the following:

1. As a starting point for determining annual performance improvement goals, the District and each school will use the most recently available results of the school improvement framework.
2. The performance improvement goals for assessments administered in the spring of 2027 must be consistent with the goals outlined in the state consolidated plan. At a minimum, the District and each school must adopt the following goals:
  - a. Ninety percent of students eligible to be assessed will meet standard on the required state assessments.
  - b. The graduation rate for all students and each of the groups required by the ESEA will not be less than ninety percent.
  - c. Performance improvement goals using the requirements of the ESEA to determine the increase in the percentage of students making progress toward English language proficiency included in the Washington school improvement framework. [The language in 2.c. is only necessary if the District administers the English language proficiency assessment described in the Washington accountability plan approved by the U.S. Department of Education.]

**Commented [KG1]:** WAC 180-105-060 (listed in Legal References section of policy) contains the performance goals.



3. The District and each school must establish goals for each of the Washington school improvement framework indicators for all students and for each of the groups required by the ESEA.

**Reporting Progress**

Annually, the Board will report the following information at a public meeting and in writing:

1. The District's performance improvement goals;
2. Student performance relative to the goals; and
3. District and building plans to achieve the goals, including curriculum and instruction, parent and guardian involvement, and resources available to parents and guardians to assist students in meeting the state standards.

Annually the District will report ~~in a news release~~ the District's progress toward meeting the District and building goals in a news release to local media.

~~The report shall also be included in each school's annual school report. In each school's annual performance report, the District will include school-level goals, student performance relative to the goals, and a summary of school-level plans to achieve the goals.~~

<u>Cross References</u>	<u>Policy 4000</u>	<u>Public Information Program</u>
Legal References:	RCW 28A.655.100	Performance goals – Reporting requirements
	WAC 180-105-020	Reading and Mathematics Goals
	WAC 180-105-060	High School Graduation Goals
	<u>RCW 28A.655.110</u>	Annual school performance report – <u>Model report form</u>
	WAC 180-105-040	Definitions
Management Resources:		
	<u>2020 – May Issue</u>	
	<u>2010 – June Issue</u>	
	<i>Policy News</i> , December 2005	Requirements Revised
	<i>Policy News</i> , October 2003	A+ Commission's Revised Performance Improvement Goals
	<i>Policy News</i> , June 1999	Accountability Bill Includes Policy Implications
	<i>Policy News</i> , June 1998	Boards must set reading goals
	<i>Policy News</i> , August 1998	CORRECTION: Reading goals policy

**Adoption Date: 12.17.03**

Policy No. 2004  
Instruction

**Chewelah School District #36**  
**Revised: 12.03; 04.19.06, 05.20.09**  
**Classification: Required Essential**